

CoreFocus Report

No.589

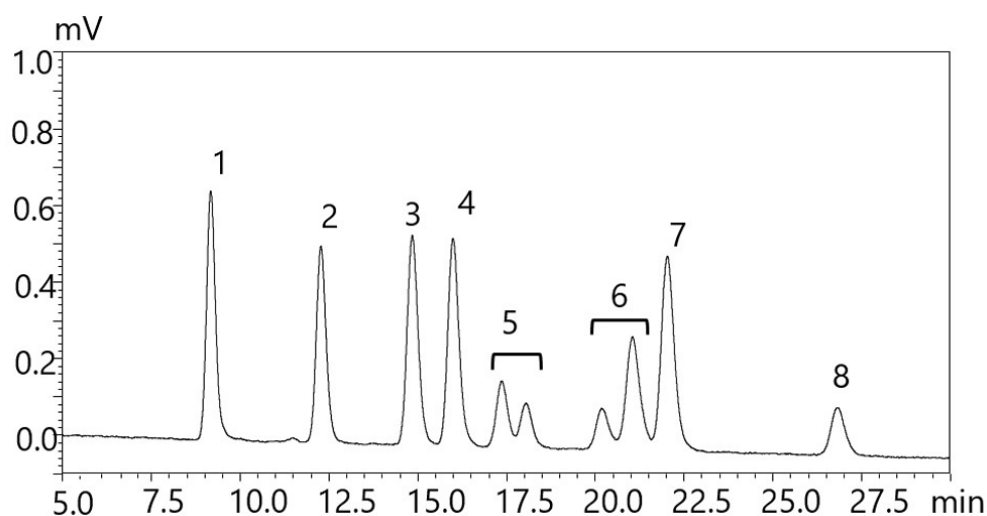
LC

HILIC

Shim-pack™ Series

Shim-pack GIST-HP Amide (Metal free) Analysis of glycan

Keywords: antibody



1. G0-GN
2. G0
3. G0F
4. Man5
5. G1
6. G1F
7. Man6
8. G2Ft

[HPLC conditions] (Nexera™ XR)	
Column	: Shim-pack GIST-HP Amide [Metal free] , 100 mm x 2.1 mm I.D., 1.9 µm*1
Mobile phases	: A) 100 mM ammonium formate (pH 4.4) B) Acetonitrile
Time program	: B conc. 78 % (0 min) → 69 % (50 min) → 50 % (50.01-55 min) → 78 % (55.01 – 62 min)
Column oven	: 40 °C
Flow rate	: 0.5 mL/min
Injection volume	: 1 µL
Detection	: Fluorescence (Ex. 330 nm, Em 420 nm) (using RF-20Axs, semi-microcell)

1*: P/N : 227-30951-02

Source : Application News 01-00728 ([JP,ENG](#))

CoreFocus, Shim-pack, Nexera are trademarks of Shimadzu Corporation or its affiliated companies in Japan and/or other countries.

Shimadzu Corporation

www.shimadzu.com/an/

For Research Use Only. Not for use in diagnostic procedures.

This publication may contain references to products that are not available in your country. Please contact us to check the availability of these products in your country.

The content of this publication shall not be reproduced, altered or sold for any commercial purpose without the written approval of Shimadzu.

Company names, products/service names and logos used in this publication are trademarks and trade names of Shimadzu Corporation, its subsidiaries or its affiliates, whether or not they are used with trademark symbol "TM" or "®".

Third-party trademarks and trade names may be used in this publication to refer to either the entities or their products/services, whether or not they are used with trademark symbol "TM" or "®".

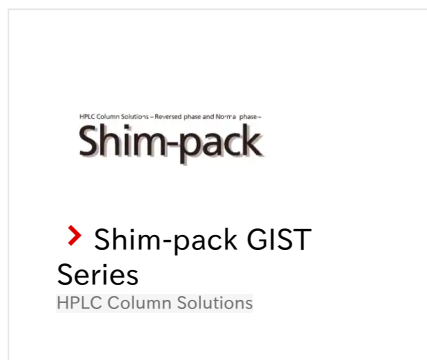
Shimadzu disclaims any proprietary interest in trademarks and trade names other than its own.

The information contained herein is provided to you "as is" without warranty of any kind including without limitation warranties as to its accuracy or completeness. Shimadzu does not assume any responsibility or liability for any damage, whether direct or indirect, relating to the use of this publication. This publication is based upon the information available to Shimadzu on or before the date of publication, and subject to change without notice.

➤ Please fill out the survey

Related Products

Some products may be updated to newer models.



Related Solutions

➤ Biopharmaceutical

➤ バイオ医薬品

➤ Price Inquiry

➤ Product Inquiry

➤ Technical Service /
Support Inquiry

➤ Other Inquiry