

# Jewelry & Gold Balances



# Value with No Compromise

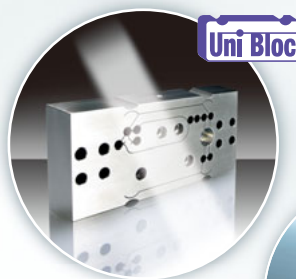
Make Every Carat Count...

Use Shimadzu Jewelry & Gold Balances



## UniBloc

Shimadzu introduced one-piece force cell technology for precision balances in 1989. Today's UniBloc is created by high-precision wire electrical discharge machining applied to a block of aluminum alloy, and replaces the conventional electro-magnetic balance sensor assembly. UniBloc's compact, uniform structure ensures stable temperature characteristics, excellent response and stable performance. The UniBloc design permits a consistency of production that assures reliability and a long operational life.



# SHIMADZU Balances, for All Your Weighing Applications

## ■ Weighing Gold in a Local Unit

Various weighing units including Tael (Hong Kong, Taiwan, Singapore, Malaysia, China) and user-defined units are available. (All series)

## ■ Counting Coins or Parts

Piece counting function is standard. (All series)

## ■ Pass/Fail Checkweighing

According to the user-preset thresholds, GO (pass), HI (over) or LO (under) will be displayed. (UW/UX series)

## ■ Production/Sales Management Using a Computer

WindowsDirect function directly types the weighed results to any Windows application you are using (e.g. Excel); no interface software is required. (TW/TX series, UW/UX series)

## ■ Using the Balance in a Retail Shop

Second display for visitors is available as an option. Second display equipped with operation keys is also available. (UW/UX series)

## ■ Battery Operation (TXB/ELB)

TXB and ELB are operated with dry batteries. Suitable for sites where a reliable power supply is not available.

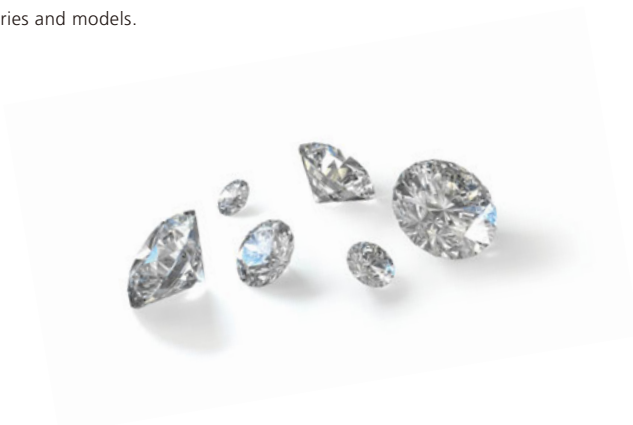
## ■ Purity Determination of Gold

An options kit and standard software allows efficient density measurement. To configure your own system, below-weigh hook is standard for UW/UX series and is optionally available for ELB series.

## ■ Automatic Calibration

The models with a built-in calibration weight can maintain accuracy without using external calibration weights. Calibration is performed with key touch only (TW/TWC/UW). PSC and Clock-CAL fully-automatic calibration functions are standard depending on the series. PSC performs calibration automatically when a change in the ambient temperature makes it necessary. With Clock-CAL, automatic calibration can be set to occur at up to three specific times per day. (UW series)

The availability of the functions, features and options described here depends on the series and models.  
Windows, Excel, Word are trademarks of Microsoft Corporation.



**Jewelry & Gold Balances**

## TW/TX series

Carat and Gold balances

| TWC / TXC



| TW / TX



| TXB



## UW/UX series

Ideal for gold



## BL series

Compact and economical



## ELB series

Portable with dry battery operation



## WindowsDirect

Enables direct communication between the balance and a PC using Windows applications. No additional software is needed to interface with spreadsheets, databases, word processing, and laboratory software.

WindowsDirect works with Windows 95, 98, 2000, NT4.0, ME and XP.  
PC must be IBM PC/AT compatible.

If you'd like to use "WindowsDirect" with "Windows 7", "Windows VISTA", or a USB port, please contact to our distributors.



# Optional Accessories to Meet All Your Requirements

## Specific Gravity Measurement



## Remote Display



## Printer



## Battery Operation



## Quick Reference Features & Functions

|                    | Series                                | UW | UX | BL  | ELB | TW / TWC | TX / TXC | TXB |
|--------------------|---------------------------------------|----|----|-----|-----|----------|----------|-----|
| Standard Functions | Various unit conversions              | ✓  | ✓  | ✓   | ✓   | ✓        | ✓        | ✓   |
|                    | Percentage display                    | ✓  | ✓  | ✓   | ✓   | ✓        | ✓        | ✓   |
|                    | Piece counting                        | ✓  | ✓  | ✓   | ✓   | ✓        | ✓        | ✓   |
|                    | Checkweighing                         | ✓  | ✓  |     |     | ✓        | ✓        | ✓   |
|                    | Built-in clock                        | ✓  | ✓  |     |     |          |          |     |
|                    | WindowsDirect                         | ✓  | ✓  |     |     | ✓        | ✓        | ✓   |
|                    | RS-232C Interface                     | ✓  | ✓  |     |     | ✓        | ✓        | ✓   |
| Auto Calibration   | Temperature CAL (fully automatic)     | ✓  |    |     |     |          |          |     |
|                    | Clock-CAL                             | ✓  |    |     |     |          |          |     |
|                    | Touch-key calibration                 | ✓  |    |     |     | ✓        |          |     |
| Display            | Large-character LCD                   | ✓  | ✓  | ✓   |     | ✓        | ✓        | ✓   |
|                    | Back Light                            | ✓  | ✓  | ✓*1 |     | ✓        | ✓        | ✓   |
| Battery Operation  | Dry Battery Operation                 |    |    |     | ✓   |          |          | ✓   |
| Application        | Application Keyboard                  | ✓  | ✓  |     |     |          |          |     |
|                    | Remote Display                        | ✓  | ✓  |     |     |          |          |     |
|                    | ISO-compliant Calibration Report      | ✓  | ✓  |     |     | ✓        | ✓        | ✓   |
|                    | Specific Gravity Measurement Software | ✓  | ✓  |     | ✓   |          |          |     |
|                    | Specific Gravity Measurement Kit      | △  | △  |     | △   |          |          |     |
|                    | Below-balance Hook                    | ✓  | ✓  |     | △   |          |          |     |
|                    | Auto off                              |    |    |     |     | ✓        | ✓        | ✓   |

\*1 : BL3200HL Only ✓: Standard △: Option

# Specifications

| Series              | Carat Balance TXC / TWC     |                   |
|---------------------|-----------------------------|-------------------|
| Model               | TXC323L / TWC323L           | TXC623L / TWC623L |
| Capacity            | 320 ct                      | 620 ct            |
| Min. Display        | 0.001 ct                    |                   |
| Pan Size (mm)       | 80 dia                      |                   |
| Repeatability       | 0.001 ct                    |                   |
| Linearity           | ± 0.002 ct                  |                   |
| Ambient Temperature | 5 – 40 °C                   |                   |
| Dimensions          | 206 (W) × 291 (D) × 241 (H) |                   |

\* TW / TWC series is equipped with built-in calibration weight.

| Series              | Gold Balance TX / TW       |         |         |                             |                 |                 |
|---------------------|----------------------------|---------|---------|-----------------------------|-----------------|-----------------|
| Model               | TX4202L                    | TX3202L | TX2202L | TX423L / TW423L             | TX323L / TW323L | TX223L / TW223L |
| Capacity            | 4200 g                     | 3200 g  | 2200 g  | 420 g                       | 320 g           | 220 g           |
| Min. Display        | 0.01 g                     | 0.01 g  | 0.01 g  | 0.001 g                     | 0.001 g         | 0.001 g         |
| Pan Size (mm)       | 167 (W) × 181 (D)          |         |         | 110 dia                     |                 |                 |
| Repeatability       | ≤ 0.01 g                   |         |         | ≤ 0.001 g                   |                 |                 |
| Linearity           | ± 0.02 g                   |         |         | ± 0.002 g                   |                 |                 |
| Ambient Temperature | 5 – 40 °C                  |         |         |                             |                 |                 |
| Dimensions          | 200 (W) × 291 (D) × 80 (H) |         |         | 206 (W) × 291 (D) × 241 (H) |                 |                 |

| Series              | Gold Balance TXB           |          |          |          |          |         |          |         |
|---------------------|----------------------------|----------|----------|----------|----------|---------|----------|---------|
| Model               | TXB6201L                   | TXB4201L | TXB2201L | TXB6200L | TXB622L  | TXB422L | TXB222L  | TXB621L |
| Capacity            | 6200 g                     | 4200 g   | 2200 g   | 6200 g   | 620 g    | 420 g   | 220 g    | 620 g   |
| Min. Display        | 0.1 g                      | 0.1 g    | 0.1 g    | 1 g      | 0.01 g   | 0.01 g  | 0.01 g   | 0.1 g   |
| Pan Size (mm)       | 160 dia                    |          |          |          | 110 dia  |         |          |         |
| Repeatability       | ≤ 0.1 g                    |          |          | 1 g      | ≤ 0.01 g |         |          | ≤ 0.1 g |
| Linearity           | ± 0.2 g                    |          | ± 0.1 g  | ± 1 g    | ± 0.02 g |         | ± 0.01 g | ± 0.1 g |
| Ambient Temperature | 5 – 40 °C                  |          |          |          |          |         |          |         |
| Dimensions          | 199 (W) × 260 (D) × 77 (H) |          |          |          |          |         |          |         |

| Series              | UW / UX                    |           |           |           |           |           |           |           |           |           |           |           |           |           |
|---------------------|----------------------------|-----------|-----------|-----------|-----------|-----------|-----------|-----------|-----------|-----------|-----------|-----------|-----------|-----------|
| Model               | UW420S                     | UW820S    | UX4200S   | UX8200S   | UX220H    |           | UW420H    | UW620H    | UW820H    | UW1020H   | UW2200H   |           | UW4200H   | UW6200H   |
| Capacity            | 420 g                      | 820 g     | 4200 g    | 8200 g    | 220 g     | 320 g     | 420 g     | 620 g     | 820 g     | 1020 g    | 2200 g    | 3200 g    | 4200 g    | 6200 g    |
| Min. Display        | 0.01 g                     | 0.01 g    | 0.1 g     | 0.1 g     | 0.001 g   | 0.001 g   | 0.001 g   | 0.001 g   | 0.001 g   | 0.001 g   | 0.01 g    | 0.01 g    | 0.01 g    | 0.01 g    |
| Pan Size (mm)       | 108 × 105                  | 108 × 105 | 170 × 180 | 170 × 180 | 108 × 105 | 108 × 105 | 108 × 105 | 108 × 105 | 108 × 105 | 108 × 105 | 170 × 180 | 108 × 105 | 170 × 180 | 170 × 180 |
| Repeatability       | ≤ 0.008 g                  |           | ≤ 0.08 g  |           | ≤ 0.001 g |           |           |           | ≤ 0.001 g |           | ≤ 0.01 g  |           |           |           |
| Linearity           | ± 0.01 g                   |           | ± 0.1 g   |           | ± 0.002 g |           |           |           | ± 3 g     |           | ± 0.02 g  |           |           |           |
| Ambient Temperature | 5 – 40 °C                  |           |           |           |           |           |           |           |           |           |           |           |           |           |
| Dimensions          | 190 (W) × 317 (D) × 78 (H) |           |           |           |           |           |           |           |           |           |           |           |           |           |

\* UW series is equipped with motor-driven built-in calibration weight providing fully-automatic calibration functions.

| Series              | BL                         |           |           |           |           |           |           |           |
|---------------------|----------------------------|-----------|-----------|-----------|-----------|-----------|-----------|-----------|
| Model               | BL320S                     | BL620S    | BL3200S   | BL220H    | BL320H    | BL2200H   | BL3200H   | BL3200HL  |
| Capacity            | 320 g                      | 620 g     | 3200 g    | 220 g     | 320 g     | 2200 g    | 3200 g    | 3200 g    |
| Min. Display        | 0.01 g                     | 0.01 g    | 0.1 g     | 0.001 g   | 0.001 g   | 0.01 g    | 0.01 g    | 0.01 g    |
| Pan Size (mm)       | 100 × 100                  | 160 × 124 | 160 × 124 | 100 × 100 | 100 × 100 | 160 × 124 | 160 × 124 | 160 × 124 |
| Repeatability       | ≤ 0.006 g                  |           | ≤ 0.01 g  |           | ≤ 0.06 g  |           | ≤ 0.001 g |           |
| Linearity           | ± 0.01 g                   | ± 0.02 g  | ± 0.1 g   | ± 0.002 g | ± 0.003 g | ± 0.02 g  | ± 0.03 g  |           |
| Ambient Temperature | 5 – 40 °C                  |           |           |           |           |           |           |           |
| Dimensions          | 170 (W) × 240 (D) × 75 (H) |           |           |           |           |           |           |           |

| Series              | ELB                        |         |          |           |           |           |           |           |           |           |  |
|---------------------|----------------------------|---------|----------|-----------|-----------|-----------|-----------|-----------|-----------|-----------|--|
| Model               | ELB120                     | ELB200  | ELB300   | ELB600    | ELB600S   | ELB1200   | ELB2000   | ELB3000   | ELB6000S  | ELB12K    |  |
| Capacity            | 120 g                      | 200 g   | 300 g    | 600 g     | 600 g     | 1200 g    | 2000 g    | 3000 g    | 6000 g    | 12 kg     |  |
| Min. Display        | 0.01 g                     | 0.01 g  | 0.01 g   | 0.05 g    | 0.1 g     | 0.1 g     | 0.1 g     | 0.1 g     | 1 g       | 1 g       |  |
| Pan Size (mm)       | 110 dia                    | 110 dia | 110 dia  | 170 × 130 | 170 × 130 | 170 × 130 | 170 × 130 | 170 × 130 | 170 × 130 | 170 × 130 |  |
| Repeatability       | ≤ 0.01 g                   |         |          | ≤ 0.05 g  |           | ≤ 0.1 g   |           |           |           | ≤ 1 g     |  |
| Linearity           | ± 0.01 g                   |         | ± 0.02 g | ± 0.05 g  | ± 0.1 g   |           |           | ± 0.2 g   | ± 1 g     |           |  |
| Ambient Temperature | 5 – 40 °C                  |         |          |           |           |           |           |           |           |           |  |
| Dimensions          | 185 (W) × 215 (D) × 55 (H) |         |          |           |           |           |           |           |           |           |  |



Company names, product/service names and logos used in this publication are trademarks and trade names of Shimadzu Corporation or its affiliates, whether or not they are used with trademark symbol "TM" or "®". Third-party trademarks and trade names may be used in this publication to refer to either the entities or their products/services. Shimadzu disclaims any proprietary interest in trademarks and trade names other than its own.

For Research Use Only. Not for use in diagnostic procedures. The contents of this publication are provided to you "as is" without warranty of any kind, and are subject to change without notice. Shimadzu does not assume any responsibility or liability for any damage, whether direct or indirect, relating to the use of this publication.