

Gas Chromatograph

# Brevis GC-2050



# Brevis™ GC-2050

Small but Mighty

"Smaller, simpler, and easier to use – without compromising performance." That's the demand from analysts. And that's why Shimadzu developed the Brevis GC-2050. This new space-saving GC delivers uncompromising analytical performance in a modern yet rugged design, easily meeting the analytical needs of laboratories in a range of industries.



01 Compact without Compromise

02 Built-in Analytical Intelligence

03 Best-in-Class Performance

Product



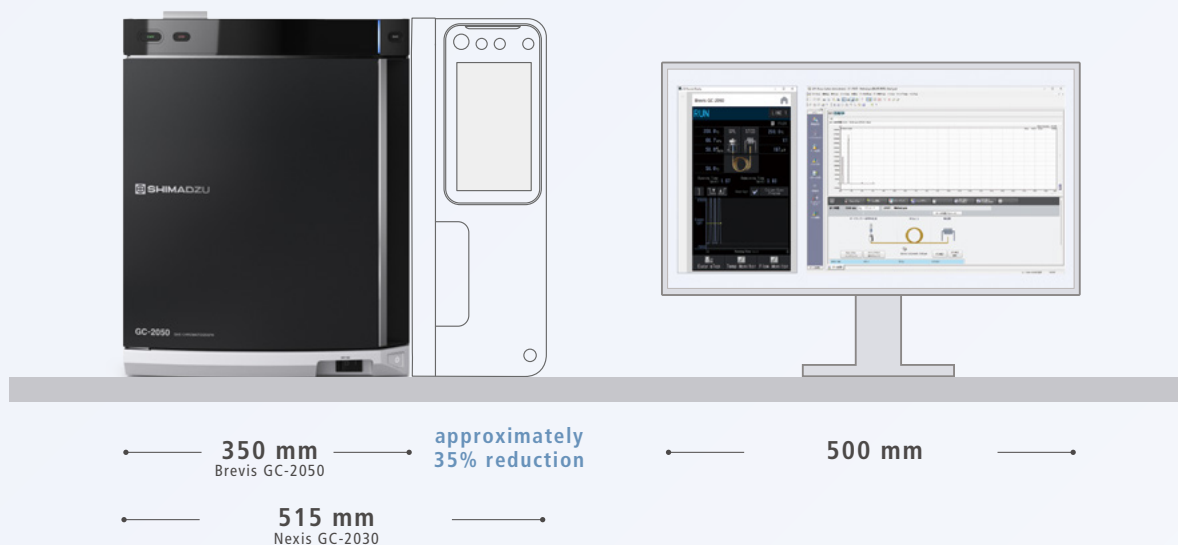


# Compact without Compromise

## Standard GC with the Width of a Laptop

The Brevis GC-2050 is 350 mm wide, enabling analysis in a space equivalent to a 15-inch laptop. Compared to the flagship Nexis™ GC-2030, the system's width has been reduced by approximately 35%. Although the conventional monitoring display has been removed, the GC Remote Display\* installed on a PC or smart device allows users to check the instrument status and view daily maintenance procedures and videos.

\*An application for Windows® devices, it can be connected simultaneously with workstations such as LabSolutions™.



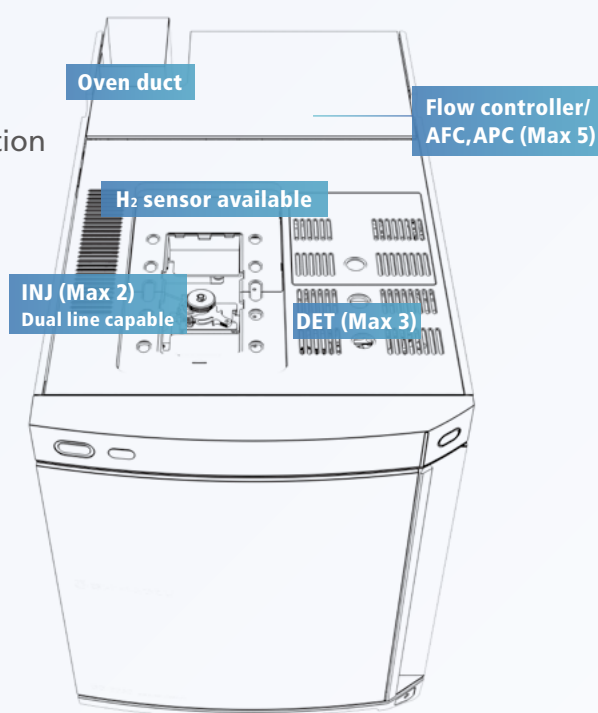
## Oven Size Fits Two Industry-Standard Columns

Despite Brevis GC's compact size, the oven is sufficiently large to ensure analysis efficiency. It can accommodate two 7-inch standard capillary columns, enabling simultaneous dual-line analysis.

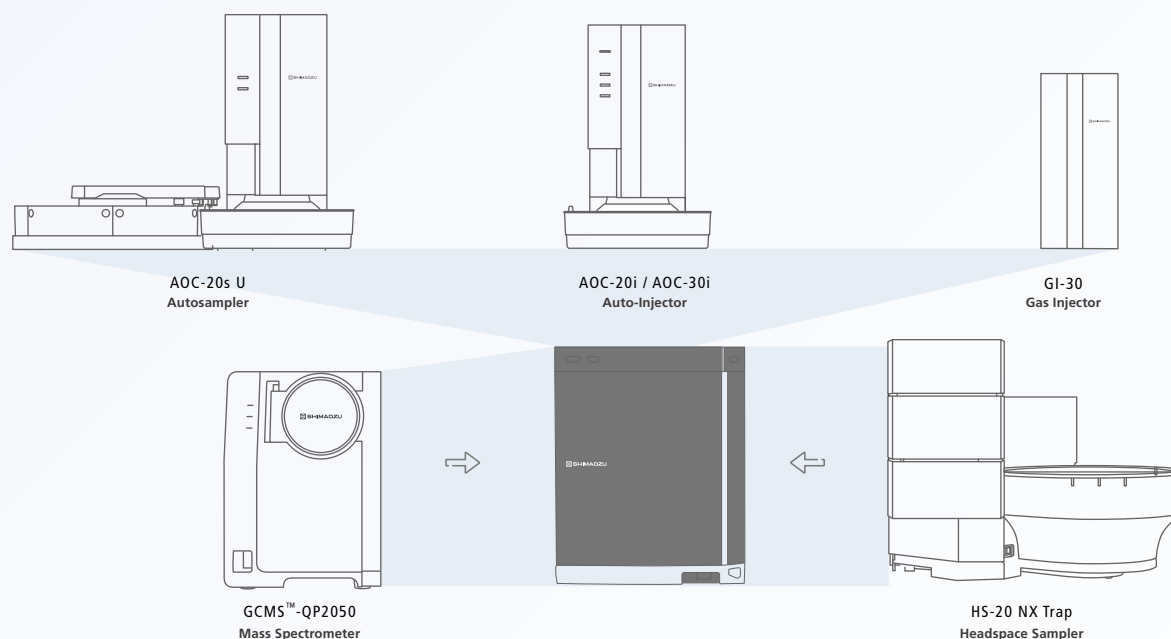


## Building on the Established GC Configuration

Built on nearly 70 years of Shimadzu's gas chromatography expertise, the system supports flexible configurations. Easily transition your existing methods and consumables to the Brevis GC without configuration constraints.



## Highly Expandable to Satisfy Laboratory Needs



### Injection Units

SPL / WBI / SINJ / PTV / OCI / SPI

### Columns

7-inch standard capillary column/packed columns

### Pretreatment Devices

AOC-20 / AOC-30 / GI-30 / HS-20 NX / HS-20 NX Trap / HS-10 / AOC-6000 Plus / TD-30 / PY-3030D

### Detectors

FID / TCD / BID / FTD / FPD / ECD / MS

### Options

Low temperature control solenoid valve / Gas selector / Hydrogen sensor / External control relay / Multi position valve

### Advanced Flow Technology

Detector Splitter / BackFlush

# Eco Functions, Less Energy, Less Gas

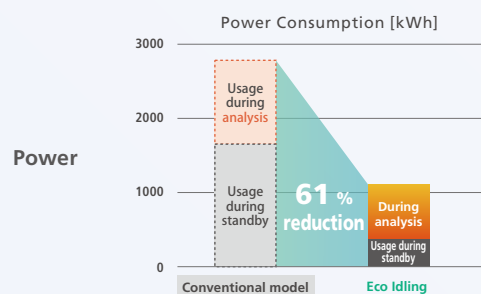
Shimadzu Proprietary

## Reduced Running Costs

The energy-saving design of the Brevis GC-2050 reduces power consumption by 30% compared to conventional models even during normal operation. Furthermore, the new Eco Idling function reduces power consumption by approximately 61% and gas consumption by 92% <sup>\*1</sup> compared to conventional models. The power savings can be converted into a CO<sub>2</sub> reduction equivalent to the annual CO<sub>2</sub> absorption of 86 cedar trees per unit. <sup>\*2</sup>

<sup>\*1</sup> The Eco effectiveness will vary depending on the environment and analytical conditions.

<sup>\*2</sup> A cedar tree 36-40 years old is estimated to absorb about 8.8 kg of carbon.

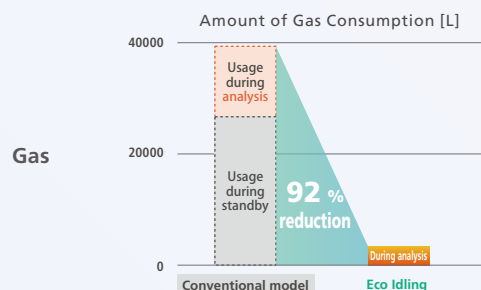


Conventional GC 2770 kWh / year

Eco Idling function used  
Brevis GC-2050 1080 kWh / year

Savings 1690 kWh / year  
Cost Savings -270 USD / year  
Reduction in CO<sub>2</sub> emissions -760 kg CO<sub>2</sub>e / year

Note: Calculated with 0.16 USD/kWh  
\* Calculated at 0.45 kg-CO<sub>2</sub>/kWh



Conventional GC 39312 L / year

Eco Idling function used  
Brevis GC-2050 3026 L / year

Savings -36286 L / year  
Cost Savings -1089 USD / year

Note: Calculated with approximately 0.03 USD/L

This is an estimate of consumption based on 260 days of operation per year and 8 hours of analysis per day, with the instrument in standby when not in use.  
Analytical conditions: Column flow rate 2 mL/min, split ratio 50, injector/detector temperature 270 °C, oven temperature ramp from 50 °C to 250 °C at 10 °C/min followed by a 10 minute hold.  
Conventional GC results did not take into account the gas saving function. Brevis GC-2050 results were obtained using the Eco idling mode, gas saver and gas selector.

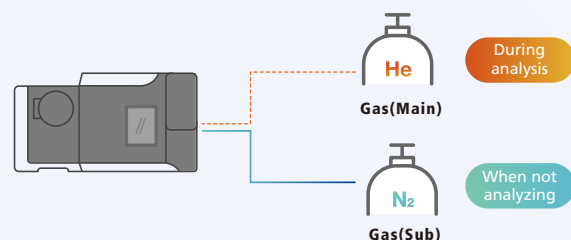


Brevis GC-2050 is an "Eco-Products Plus" certified product.

Since 2010, Shimadzu has been offering energy- and resource-saving "Eco-Products Plus" product. By 2023, these products have helped reduce CO<sub>2</sub> emissions during customer use by 67,149 tons, contributing to global warming prevention.

## Options Supporting Cost Reductions and Safety

### Gas Selector



The carrier gas can be switched from helium to nitrogen except during analysis, therefore minimizing the consumption of helium gas during standby.

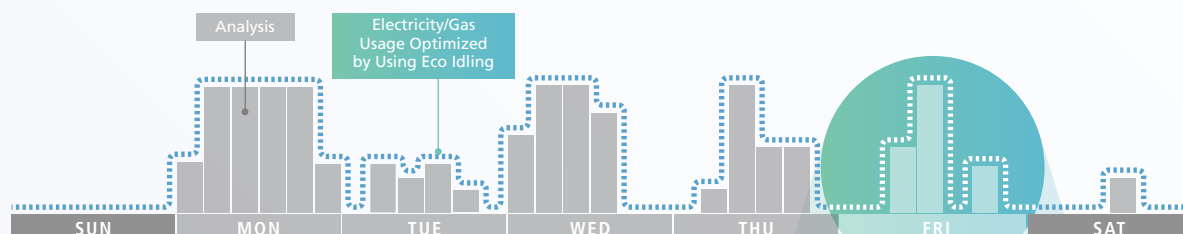
### Hydrogen Leak Sensor



Analysis can be performed with easily acquired hydrogen as the carrier gas, maximizing analytical throughput.

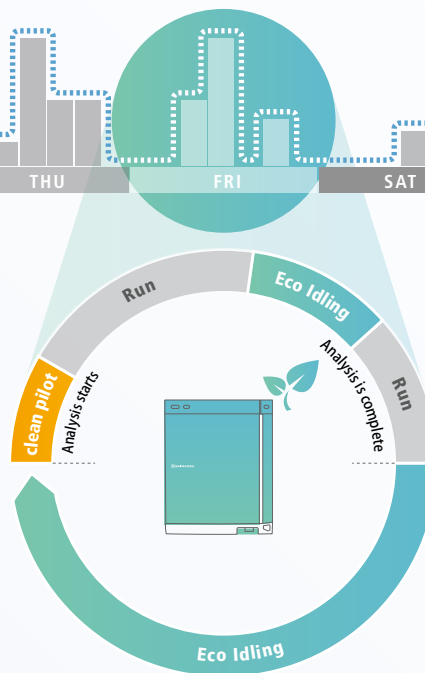
## Eco Design

### Eco Idling: Making Your Usual Analysis Eco-Friendly



#### Eco Idling Function

The Eco Idling function maintains accurate analytical performance during analysis, but automatically switches to an energy-saving status when not analyzing. It learns the analysis patterns, visualizes the amount of weekly analysis work, and can also propose an eco operation schedule to laboratory chemists.



### World's First CO<sub>2</sub> Reduction Visualizing Gas Chromatograph

\*As of January 2025, according to a Shimadzu survey



The amount of CO<sub>2</sub> reduction and the savings in power, gas, and cost can also be viewed on the software screen which raises operator awareness of savings and makes the lab more eco-friendly.

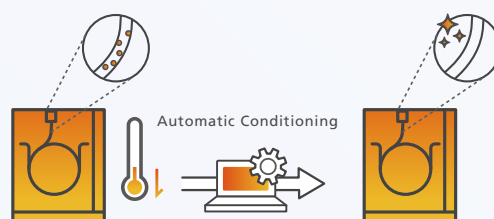
# Built-in Analytical Intelligence

## Preparing for Analysis

### Automating the Procedures of Experienced Analysts, Clean Pilot



Baselines can be unstable during GC startup. The Clean Pilot function performs quick and efficient automatic conditioning of columns, which provides stable analytical results and reduces the burden on laboratory personnel.

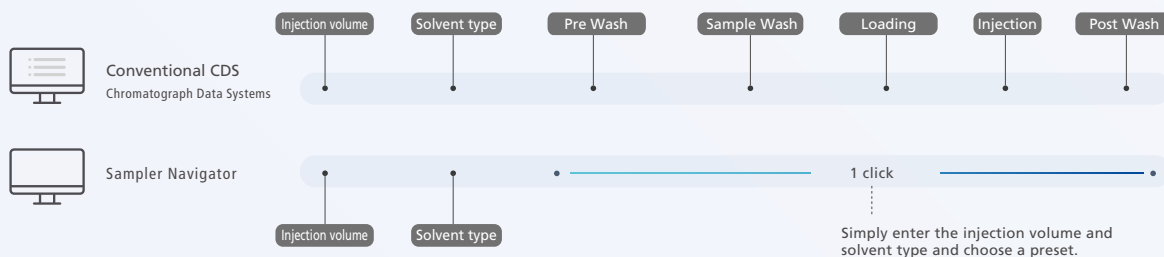


## Method Creation

### Built-in Injection Expertise, Sampler Navigator



Injection may seem trivial, but it is actually a very complex process that requires a lot of optimization. The Sampler Navigator reduces the guesswork involved by letting you choose from a carefully curated list of optimized methods, meticulously prepared by experts in gas chromatography. Get up and running with a single click.

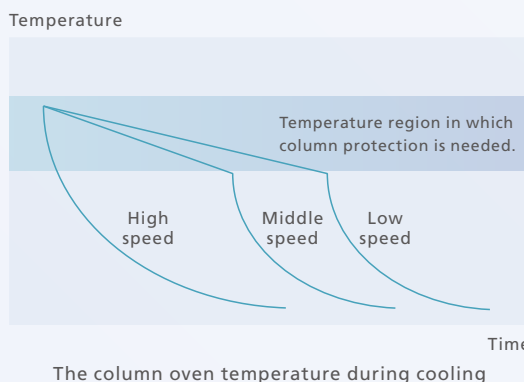


## During Analysis

### Protecting Columns



Selecting the column oven cooling speed protects columns, which are sensitive to abrupt temperature changes, ensuring a long column operating life and stable data quality.

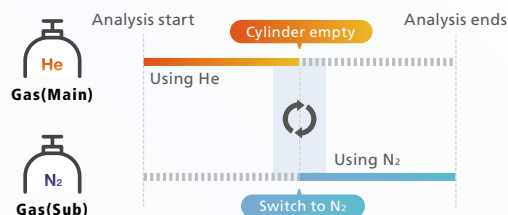




## Supply Gas Check



When connecting a main and a spare gas cylinder to the gas selector (option), the gas selector will monitor the main gas cylinder pressure and automatically switch the gas supply to the backup line when the cylinder becomes empty. This prevents column damage and other problems before they occur, allowing you to continue analysis with peace of mind.

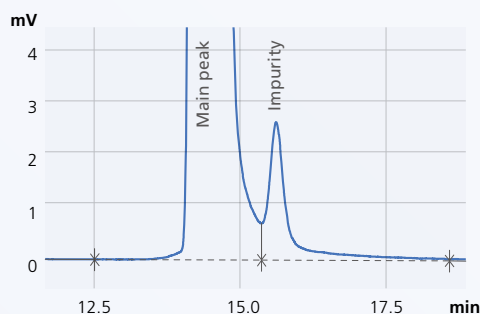


## Data Analysis

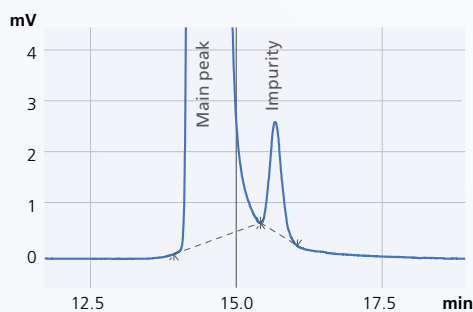
### High Precision Data Processing in a Single Step i-PeakFinder™ Automatic Peak Integration Function



The manual integration of unresolved peaks is a labor-intensive process prone to inconsistent results since this process is highly dependent on the experience level of the user. Shimadzu's proprietary i-PeakFinder peak integration algorithm mitigates this issue. i-PeakFinder processes large volumes of data with high precision in a single step, saving time and increasing the consistency of results.



Conventional peak integration method

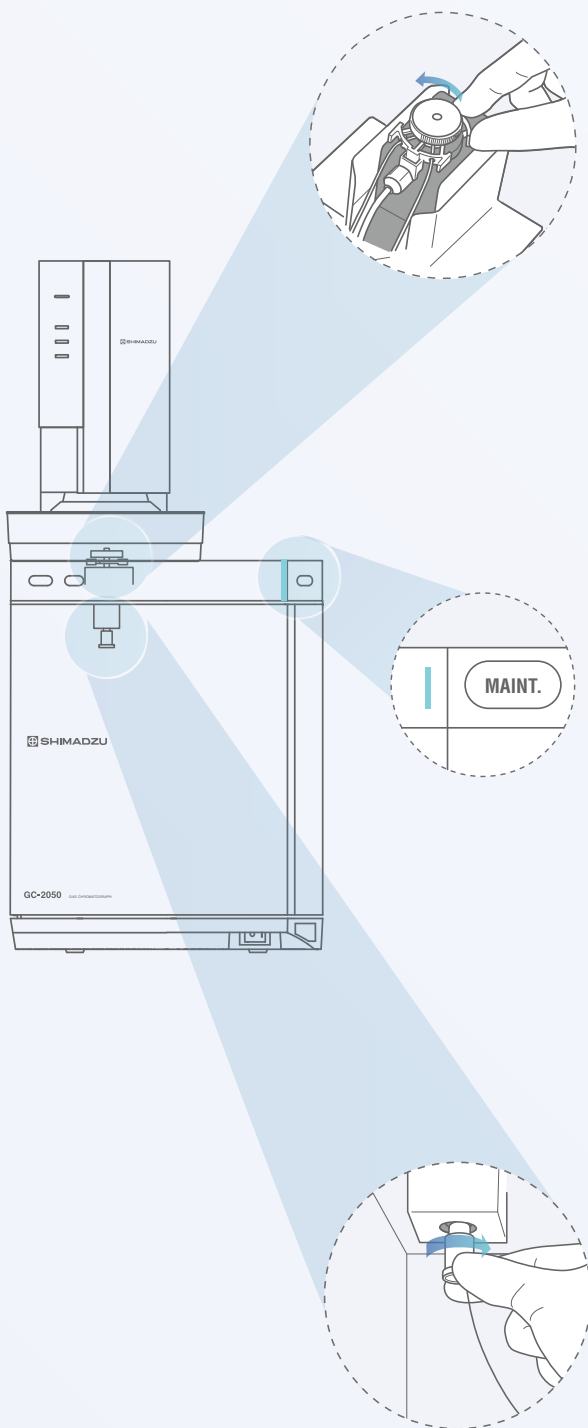


i-PeakFinder



Analytical Intelligence is a new approach to analytical instruments proposed by Shimadzu. The system and software perform operations on par with experienced experts, and automatically make judgments regarding the quality of status and results, thereby providing the user with feedback and resolving problems. Additionally, the system compensates for differences in knowledge and experience with respect to the analysis instrument, ensuring the reliability of the data.

## Easier, Faster, Expert-Level Maintenance



### One-Touch Inlet Maintenance

The injection port can be opened or closed without tools by simply sliding the ClickTek™ Nut lever. Replace the insert, slide the lever, and feel the click to ensure leak-free performance.

### Easy sTop



Clicking the MAINT. (Maintenance) button on the GC will start lowering the temperature of the GC inlet and oven, and stop the gas supply automatically.\* After maintenance of the inlet, clicking the button again will return the instrument to standby after an automatic leak check. Routine maintenance procedures can be further simplified.

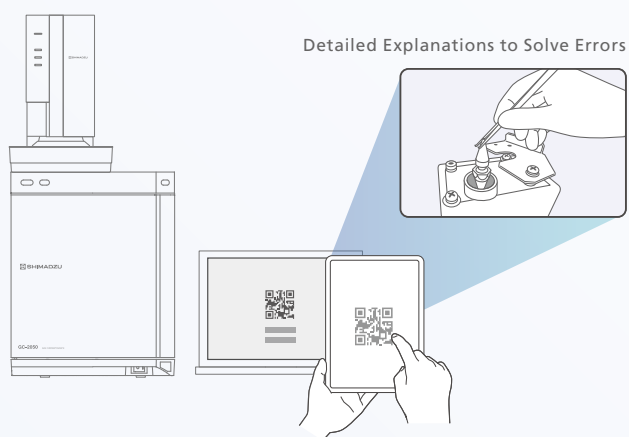
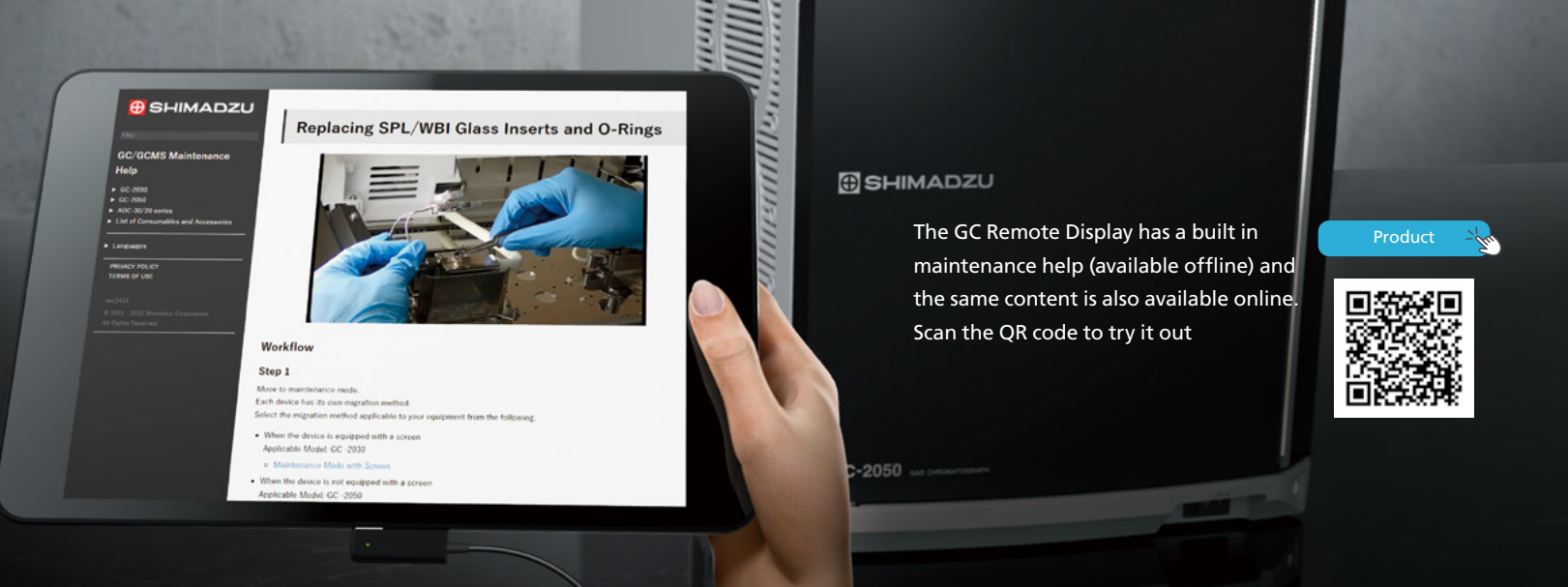
\*Note: Disabling the automatic gas supply shutdown to protect the MS detector is possible.



### Tool-Free Column Installation

The ClickTek™ Connector (option) makes column attachment a one-touch operation. A noticeable clicking sensation signals a secure column connection, putting the user at ease.

Note: The ClickTek connector is optional.



## Error Solution Navigation

When a smart device reads the code or clicks the URL link on a PC, a solution, including procedures or videos, is presented for a quick recovery.



## Remote Operation and Monitoring

LabSolutions Direct, a standard feature of LabSolutions, allows you to monitor instrument status and chromatographic signals, start and stop the instrument, and start the analysis from a web browser on a PC or smart device at a remote location.



## Early Detection of Malfunctions

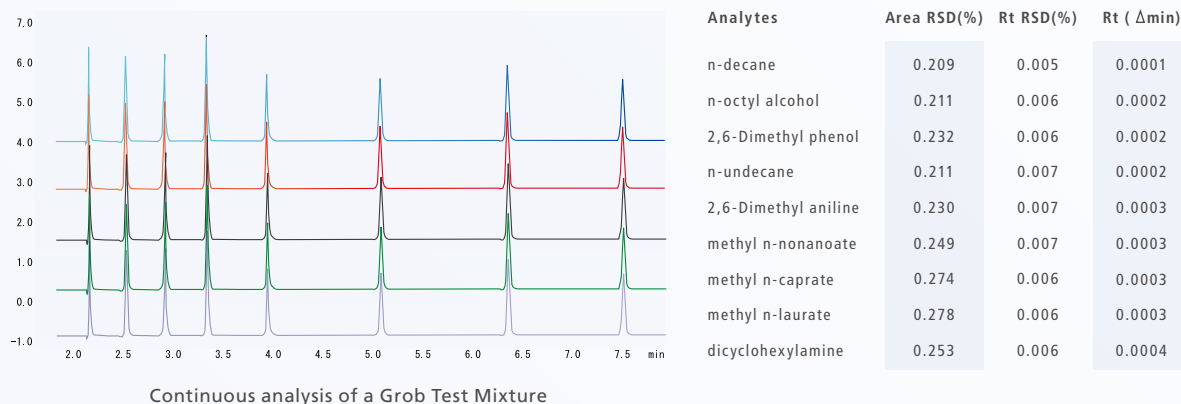
You can remotely monitor the system's operational status. The early detection of errors or miscues prevents downtime and eliminates valuable sample loss.



# Best-in-Class Performance

## Outstanding Analytical Reproducibility

The Brevis GC-2050 achieves high area and retention time reproducibility. The figure below shows continuous analysis results when using the AOC-30i auto-injector.



## Application examples

Brevis GC-2050 enables analysis with He, N<sub>2</sub> or H<sub>2</sub> as the carrier gas.

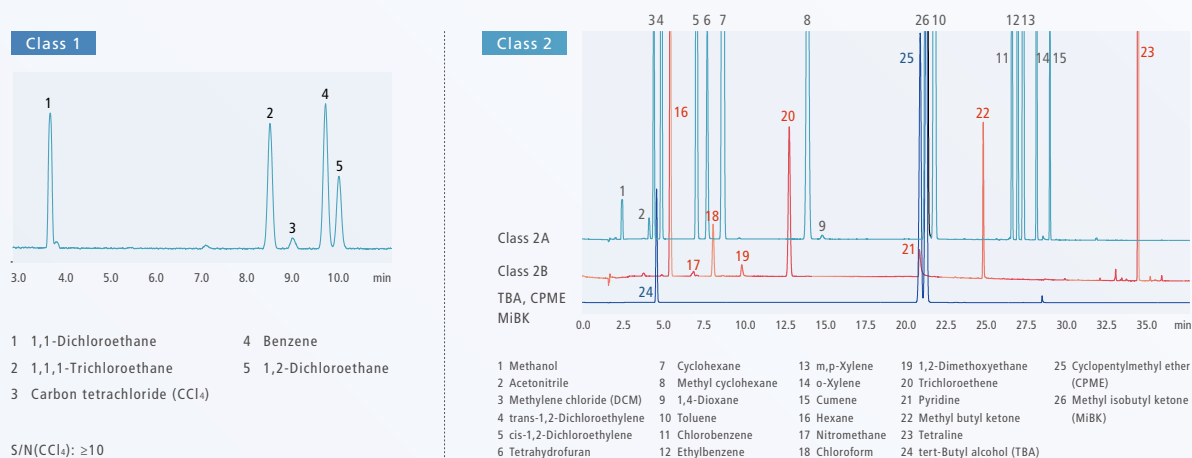
[Application](#)

## Pharmaceutical

[Application](#)

Residual solvent analysis in pharmaceuticals according to USP <467> using H<sub>2</sub> carrier gas

Shown here are the results from an analysis of a standard solution for operating method A (water-soluble samples). In the analysis of carbon tetrachloride, which requires sensitivity confirmation, against residual solvents in Class 1, a good S/N ratio was achieved. Furthermore, excellent separation is possible for Methyl Isobutyl Ketone (MIBK), which has been added to the Class 2 list.



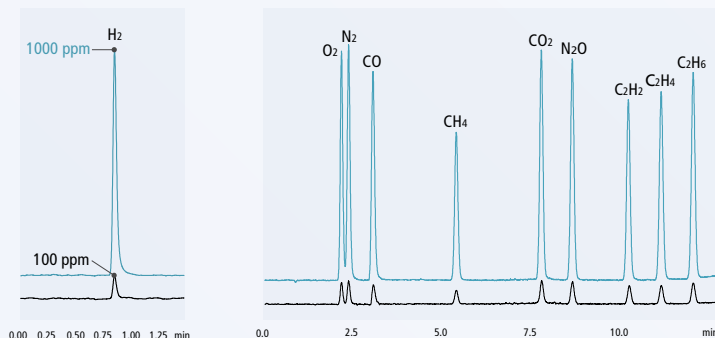


## GX (Green Transformation)

Application

### Analysis of Inorganic Gases and Light Hydrocarbons Using GI-30 Auto Gas Injector

The redesigned Thermal Conductivity Detector (TCD) and Shimadzu's unique Barrier Discharge Ionization Detector (BID) allow the analysis of compounds from trace to high concentrations (sub-ppm to percentage levels). Combined with the new GI-30 auto gas injector, they support various gas analysis needs. The GI-30's features to prevent adsorption and maintain temperature ensure high accuracy. The chromatogram below shows results using the GI-30 and TCD detector on the Brevis.



Hydrogen analysis with TCD  
(Carrier gas: Nitrogen)

Inorganic gases and light hydrocarbons analysis with TCD  
(Carrier gas: Helium)



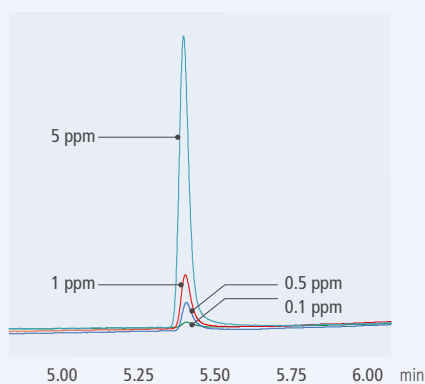
### Analysis of Trace Carbon Monoxide (CO) in Hydrogen Fuel Using Jetanizer™

Application

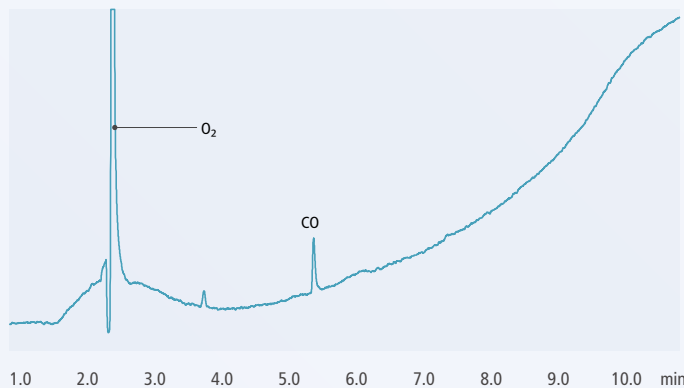
The Jetanizer is an FID nozzle methanizer that can convert CO and CO<sub>2</sub> to CH<sub>4</sub>. Using the Brevis GC-2050 and the Jetanizer, Carbon Monoxide (CO), an impurity in hydrogen fuels, can be analyzed and detected with high sensitivity at 0.2 ppm, the concentration permitted in ISO 14687-2019.



Appearance of the Jetanizer™



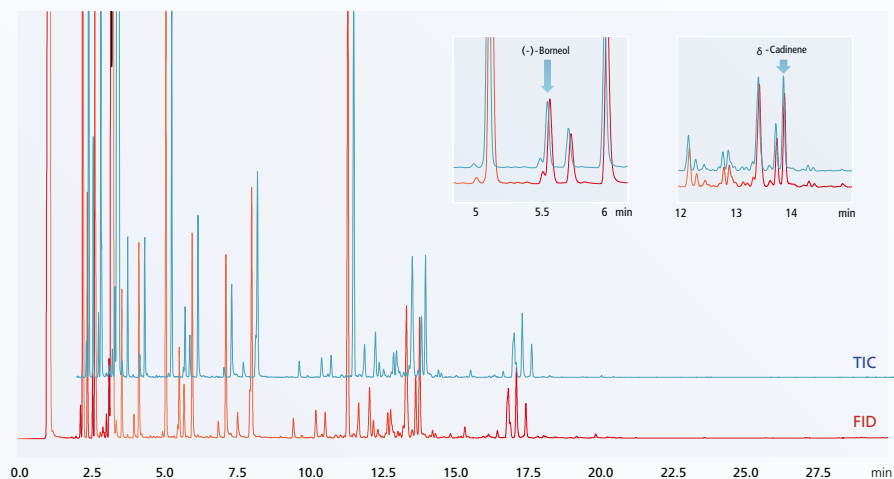
Chromatogram of CO in H<sub>2</sub>



Chromatogram of 0.2 ppm CO in H<sub>2</sub>

## Simultaneous MS and FID Analysis of Cypress Oil Using a Detector Splitting System

The detector splitting system allows you to obtain data from multiple detectors simultaneously in a single measurement. In this example of analyzing cypress oil, we monitored key components using an FID, which provides excellent linearity, and identified other unknown components with an MS.

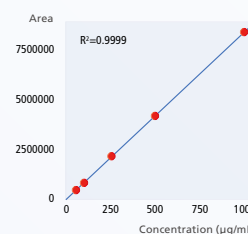


Cypress Oil FID and TIC Chromatograms

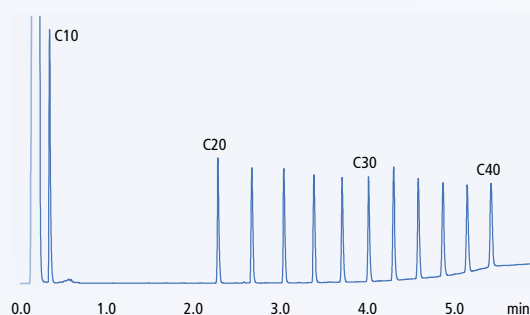
## Environmental

### Fast analysis of Total Petroleum Hydrocarbons (TPH) using H<sub>2</sub> carrier gas with dual injectors

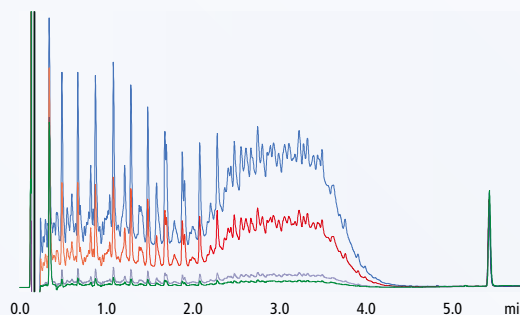
Despite its compact body, the Brevis GC-2050 is capable of simultaneous dual-line analysis. In this example, dual-line, high-speed TPH analysis was performed to maximize analytical throughput with a single GC.



Calibration curve of Mineral oil type A and B standards



Chromatogram of n-alkane mixture samples



Overlaid chromatograms of QC standard solutions



## Now Fully Loaded—Optimal Analysis System for Your Needs

### AOC-20 and AOC-30 Series Auto Injector System

The AOC-20/30 liquid injector automates analysis for up to 150 samples, reducing operator workload and enabling precise consecutive analyses. Shimadzu's proprietary injection method minimizes septum damage and injection port contamination, ensuring high reproducibility analysis.

### AOC-6000 Plus Multifunctional Autosampler System

The system can accommodate a variety of sample injection methods including liquid injection, headspace injection, and solid-phase micro extraction. Further, the system is capable of automatic sample preparation, such as sample dilution, internal standard addition, and calibration curve creation.

### TD-30 Thermal Desorption System

The thermal desorption system enables the analysis of organic gases and compounds collected on sorbent tubes. It supports the analysis of compounds across a wide range of boiling points, from low to high.

### GI-30 Auto Gas Injector System

The GI-30 is Shimadzu's proprietary automatic gas injector designed for highly air-tight analysis. It enables automated, highly reproducible injection for analyzing both inorganic and organic gases, including those with adsorbable components.

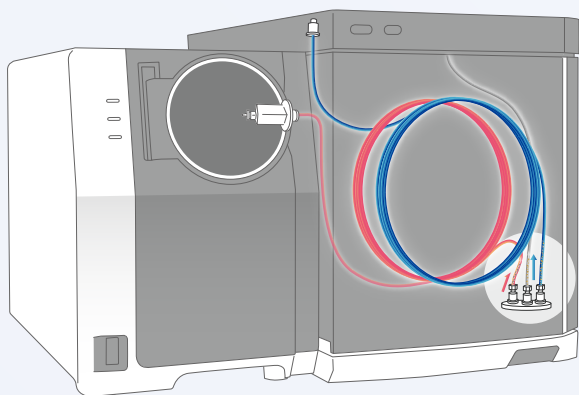
### Customized System for Gas Analysis

The Brevis GC-2050 can be customized for specific gas analysis applications. The newly developed multi position valve achieves high-accuracy, high-sensitivity, and high-separation analysis, with stable performance across extended periods of consecutive analyses without human intervention.

### Pyrolysis Analysis System

High-polymer compounds undergo pyrolysis at temperatures of 500 °C or higher, and the thermal degradation products obtained are analyzed. This enables the identification of the high polymers and better analysis of the higher order structure.

## Options to Boost Analysis Efficiency



### Multiple Chromatograms from a Single Analysis

Detector Splitter (2 Detectors / 3 Detectors)

This system splits analytes into different detectors, allowing you to obtain multiple chromatograms simultaneously. It supports up to three detector signals in a single analysis, such as FID, MS, and ECD saving both cost and time while enhancing productivity.

### Shorten Analysis Time to Half

Backflush (Post-column / Mid-column)

This system reverses the carrier gas flow to remove leftover compounds from the column through the split line, reducing analysis time and boosting productivity. It is essential for analyzing high boiling point compounds containing sample.

## Injection Ports

The Brevis can simultaneously accommodate up to two injection ports.

Split/Splitless Injection Unit (SPL)\*<sup>1</sup>

Direct Injection Unit (WBI)

On Column Injection Unit (OCI)

Program Heating Injection Unit (PTV)

Packed Column Injection Unit (SINJ)\*<sup>2</sup>

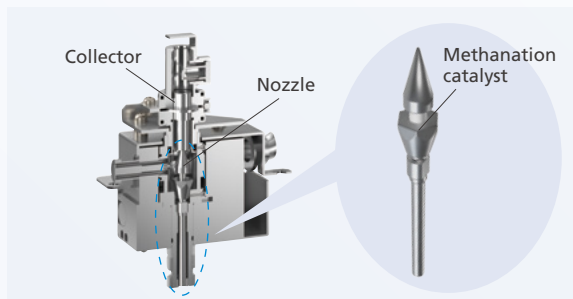
Split Injection Unit for Gas (SPI)

\*1 Inert option available

\*2 Glass/SUS packed columns can be connected

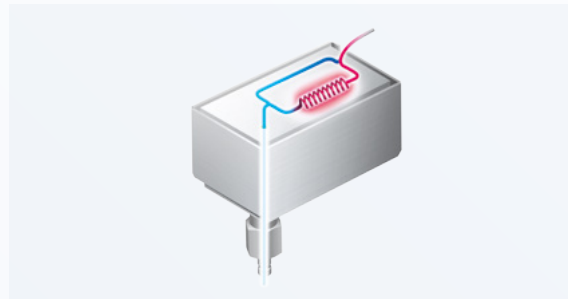
## Detectors

The Brevis GC can simultaneously accommodate up to three detectors.



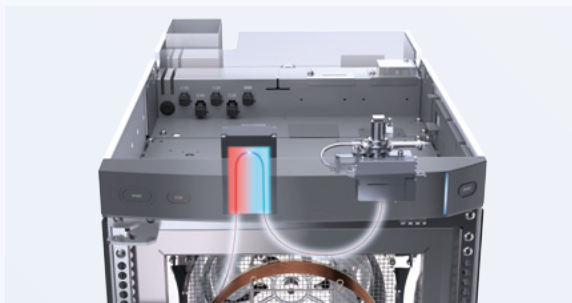
### FID / Jetanizer-FID

FID nozzle and collector structures have been optimized to provide improved response in comparison to conventional models. Further, the FID with Jetanizer is capable of high-sensitivity detection of CO and CO<sub>2</sub> from less than 1 ppm to 100%.



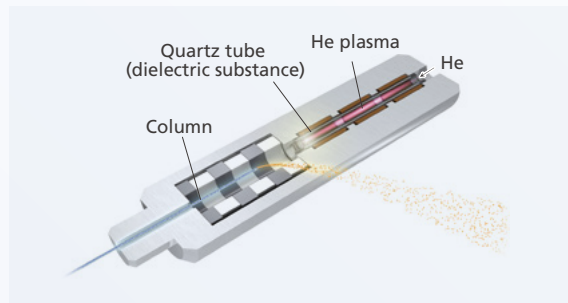
### Newly Designed TCD

In comparison to conventional models, the newly designed TCD can significantly shorten the time from startup to stabilization, enabling high-sensitivity analysis of inorganic gases and light hydrocarbons.



### Polyarc-FID

Polyarc converts all organic compounds to methane molecules before detection by FID so that a uniform response is obtained with the FID. This reduces difficult, time-consuming calibration.



### BID

This universal detector offers high-sensitivity analysis by using a low-frequency dielectric barrier discharge plasma for ionization. All compounds other than He and neon (Ne) can be detected with high sensitivity.

### Mass Spectrometer (MS)

This detects and measures the mass-to-charge ( $m/z$ ) ratio of ions to identify any compounds.

### Electron Capture Detector (ECD)

This detects electrophilic compounds such as organic halide and organometallic compounds.

### Flame Photometric Detector (FPD)

This detects phosphorus, sulfur, and organotin compounds.

### Thermal Ionization Detector (FTD)

This detects organic nitrogen compounds, and inorganic and organic phosphorus compounds.

# Tested & Proven Consumables

## Genuine Consumables of Reliable Quality

Proven quality consumables are critical to getting the right analysis results and minimizing downtime. Shimadzu offers a wide range of consumables to maximize the performance of GC/GCMS systems.



The diagram shows a Shimadzu GC/GCMS system with a sample tray. Various consumables are highlighted by callouts:

- Xtra Clean Conical Cap**: A small, clear, conical cap used for sample vials.
- Xtra Life Microsyringe**: A long, thin, clear syringe used for precise liquid delivery.
- Certified Quality (CQ) Vial**: A small, clear glass vial used for sample storage.
- Xtra Life Inlet Septum**: A small, red, cylindrical septum used for sample injection.
- Inlet Insert**: A small, clear, cylindrical insert used for sample injection.
- Shimadzu SH and SS Series Column**: A long, thin, clear column used for gas chromatography.



# Data Management

Providing Reliable Data Management and a Comfortable Analysis Environment, LabSolutions™

## Centralized Management of Data and User Information

LabSolutions offer rich features to help meet FDA 21 CFR Part 11 and the Japanese Ministry of Health, Labour and Welfare guidelines on electronic records and electronic signatures. It also includes functions for data integrity to prevent data falsification and replacement. User information and operation histories are managed in a database, allowing optimal user management based on roles, such as system administrator and analyst.



## Connected to Your Current Software, GC Drivers

Using the GC driver, the Brevis GC-2050 and other Shimadzu GC instruments can be connected to other companies' CDS (Chromatographic Data System), such as OpenLab™, Chromeleon™, Empower™, etc. Shimadzu GCs can be operated without changing your instrument control or analysis environment.

(For details, please check the latest GC driver compatibility status separately.)



Shimadzu GC Driver for  
OpenLab CDS

Product



Shimadzu GC Driver for  
Chromeleon 7

Product



Shimadzu GC Driver for  
Waters Empower

Product

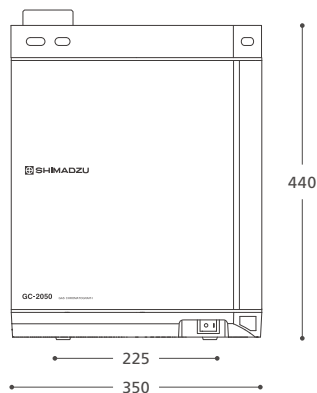


# System

## Size and Weight

Height : 440 mm  
 Width : 350 mm  
 Depth : 620 mm  
 Weight : 29.8 kg

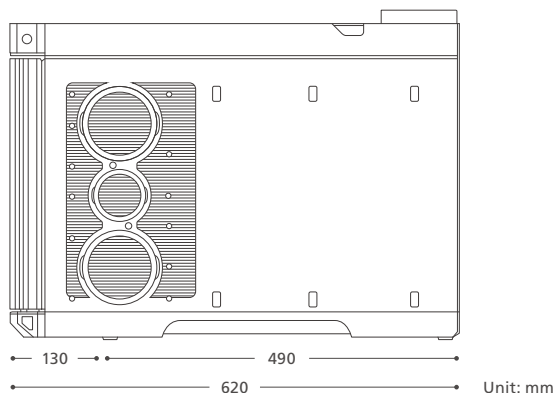
Note: This is the value for the SPL/FID model (excluding protrusions).



## Certifications

- IEC61010-1, IEC61010-2-010
- CE marking (compliant with EU standards)
- EMC (EN 61326-1)
- EU RoHS/Chinese RoHS
- KC mark certification (Korea EMC)

Note: Depends on the area and product model



Brevis, Nexis, ClickTek, the Analytical Intelligence logo, LabSolutions, i-PeakFinder, GCMS-QP and GCMS-TQ are trademarks of Shimadzu Corporation or their affiliates in Japan and/or other countries. Windows is a trademark or registered trademark of Microsoft Corporation in the United States and other countries. Chromeleon is a trademark of Thermo Fisher Scientific Inc. and its affiliates. OpenLab is a trademark or registered trademark of Agilent Technologies, Inc. in the United States and other countries. Empower is a trademark of Waters Corporation and its affiliates.



Shimadzu Corporation

[www.shimadzu.com/an/](http://www.shimadzu.com/an/)

### For Research Use Only. Not for use in diagnostic procedures.

This publication may contain references to products that are not available in your country. Please contact us to check the availability of these products in your country.

Company names, products/service names and logos used in this publication are trademarks and trade names of Shimadzu Corporation, its subsidiaries or its affiliates, whether or not they are used with trademark symbol "TM" or "®".

Third-party trademarks and trade names may be used in this publication to refer to either the entities or their products/services, whether or not they are used with trademark symbol "TM" or "®".

Shimadzu disclaims any proprietary interest in trademarks and trade names other than its own.

The contents of this publication are provided to you "as is" without warranty of any kind, and are subject to change without notice. Shimadzu does not assume any responsibility or liability for any damage, whether direct or indirect, relating to the use of this publication.