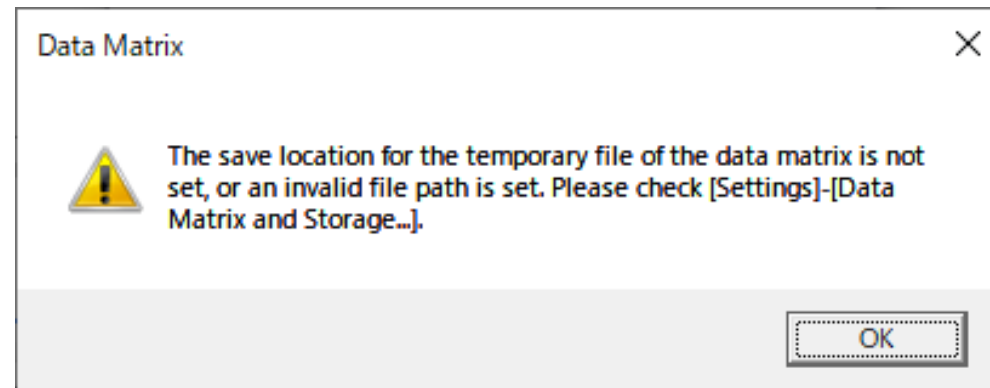


# Setting a file location for saving temporary data matrix files

(On initial startup only)

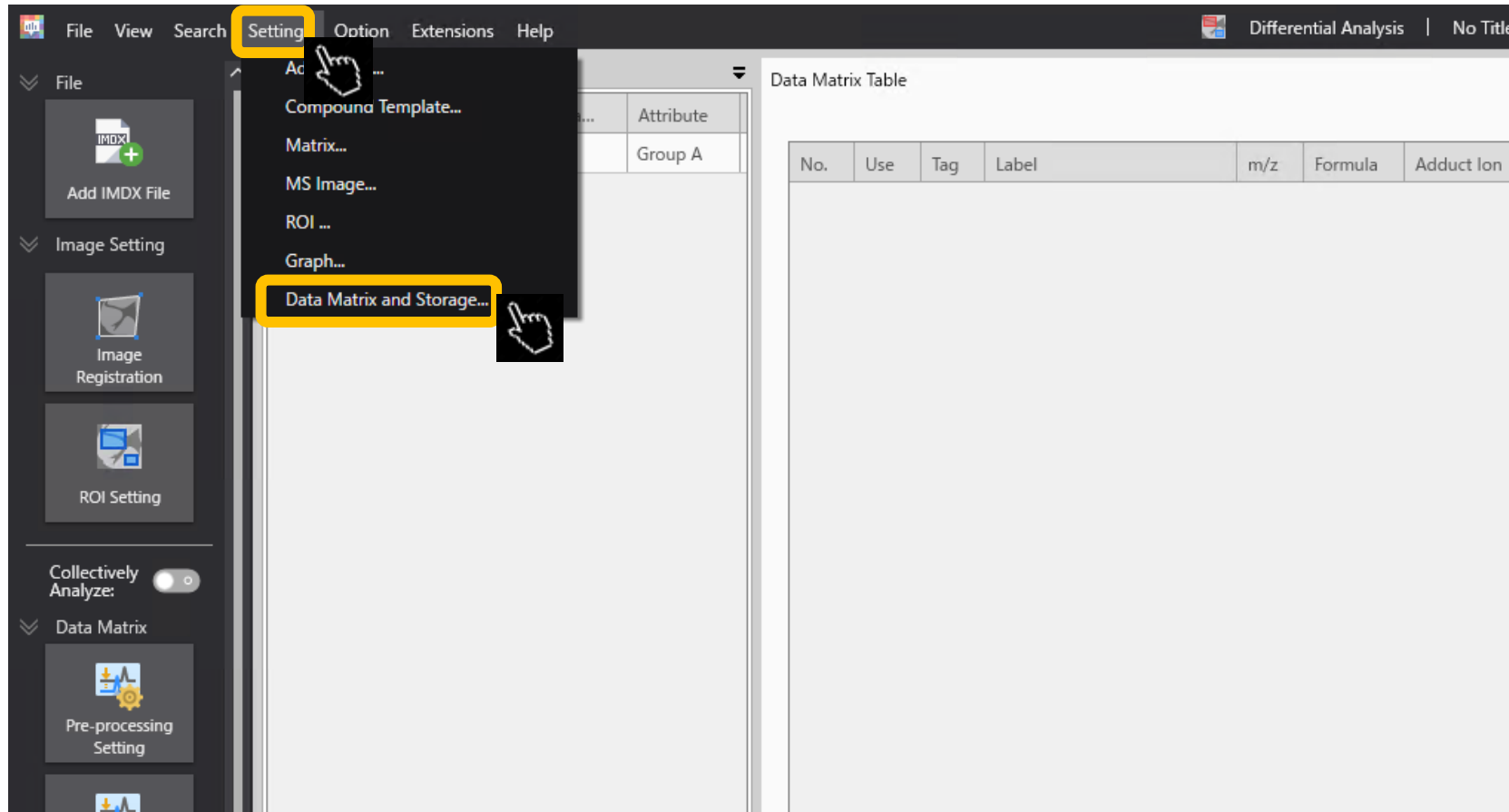
# Settings are needed on the first start-up

- If the save settings have not been specified, the following error message will appear:



# Applying settings




Menu bar → “Settings” → “Data matrix/Storage”



# Indicate the save location for temporary files

**Data Matrix Storage Setting**

It is recommended to use an SSD as the temporary file save location. It will have a great effect on the processing speed.

Data Matrix Temporary File Save Location    

Number of IO Queues Per Thread

Number of IO Threads

RAID0  Use

Block Size

Number of Drives

Number of IO Queues Per Thread: Set the number of IO queues for each read thread. Usually it is no problem to leave it as the default value of 16.

RAID0: If the specified temporary file save location uses RAID0, tick the box. For a drive which does not use RAID0, leave the box blank (default).