

Tagging

About tagging:

- In IMAGEREVEAL MS, data can be displayed in various forms such as tables, images and graphs.
- To aid understanding, colours can be added to specific data.
- This is referred to as “tagging”
- The colour selected will be shown in all data displays

Example of tagging: Main screen

The screenshot displays the IMAGEREVEAL software interface with the following components:

- Left Panel:** A vertical toolbar with icons for File, Image Setting, Image Registration, ROI Setting, Collectively Analyze, Data Matrix, Pre-processing Setting, Pre-processing, Data Matrix Setting, Data Matrix Calculation, Differential Analysis, Test, PCA Calculation, PCA Result, and PLS Calculation.
- ROI List:** A table with columns: No., Use, File Name, ROI No., and Attribute. It lists four ROIs for 'Testicle_9A...'.
- Data Matrix Table:** A large table with columns: No., Use, Tag, Label, P Value (ANOVA), and two columns for ROI001 and ROI002. It contains 20 rows of data.
- MS Image:** A large heatmap visualization of mass spectrometry data. It includes a 'Display' dropdown, a color scale bar, and a 'Copy Information' button. The right side shows metadata: Compound Name/Comment (TIC), File Name (Testicle_9AA_PL_SL_Sx_1_AREA01.i.mdx), and Type (TIC).
- Graph:** A section with 'Spectrum' and 'Box Plot' tabs. It includes a 'Display' dropdown, a color scale bar, and a 'Peak Picking' button.
- MS Image List:** A section with 'Add MS Image', 'Sort', and 'Display' buttons. It shows a list of four MS images with their respective labels and a 'TIC' label.
- Analysis Parameters:** A table with columns: No., Name, and Value. It lists nine parameters for 'TIC' analysis, including 'Normalize', 'Normalize Reference Value Setting', 'Normalize Minimum Threshold(%)', 'Data Matrix Analysis Method', 'm/z Range', 'Tolerance/Bin Size (Da)', 'Labeling', 'Exclusion List', and 'Threshold Setting'.

At the bottom, a grey box contains the text: ✂ Set "Sort" in the MS image list to "compound" and Click [Icon].

Example of tagging: Main screen

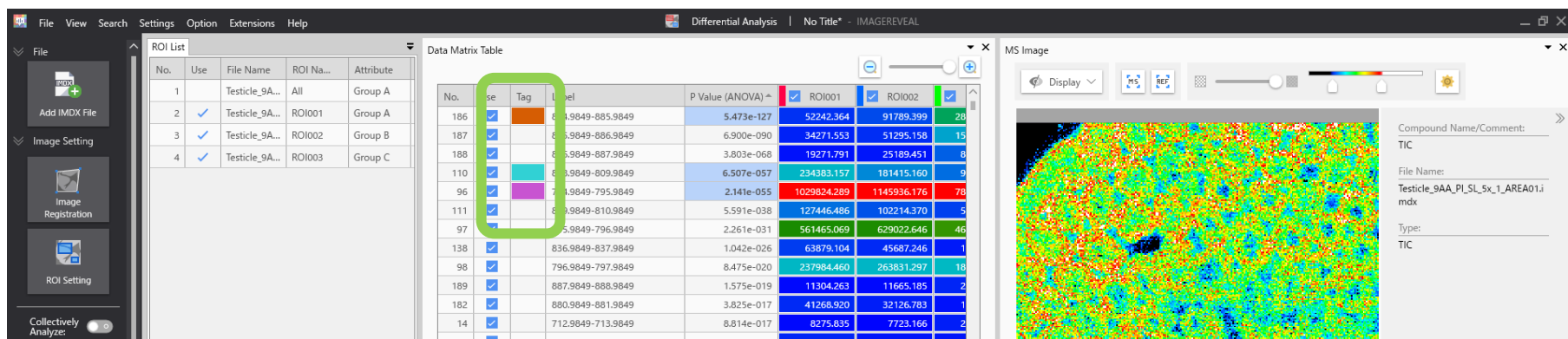
The screenshot displays the IMAGEREVEAL software interface, which is used for differential analysis of mass spectrometry data. The interface is divided into several panels:

- File Panel (Left):** Contains options for adding IMDX files, image registration, ROI setting, and analysis parameters.
- ROI List:** A table listing regions of interest (ROIs) with columns for No., Use, File Name, ROI Name, and Attribute.
- Data Matrix Table:** A large table showing data points for various ROIs, including columns for No., Use, Tag, Label, P Value (ANOVA), and ROI values.
- MS Image:** A panel displaying a mass spectrum image with a color scale and a 'Copy Information' button.
- Graph:** A panel for visualizing data, including a 'Spectrum' plot and a 'Box Plot'.
- MS Image List:** A panel showing a list of mass images with a color palette for selection.
- Analysis Parameters:** A panel for configuring analysis settings, including normalization, thresholding, and labeling.

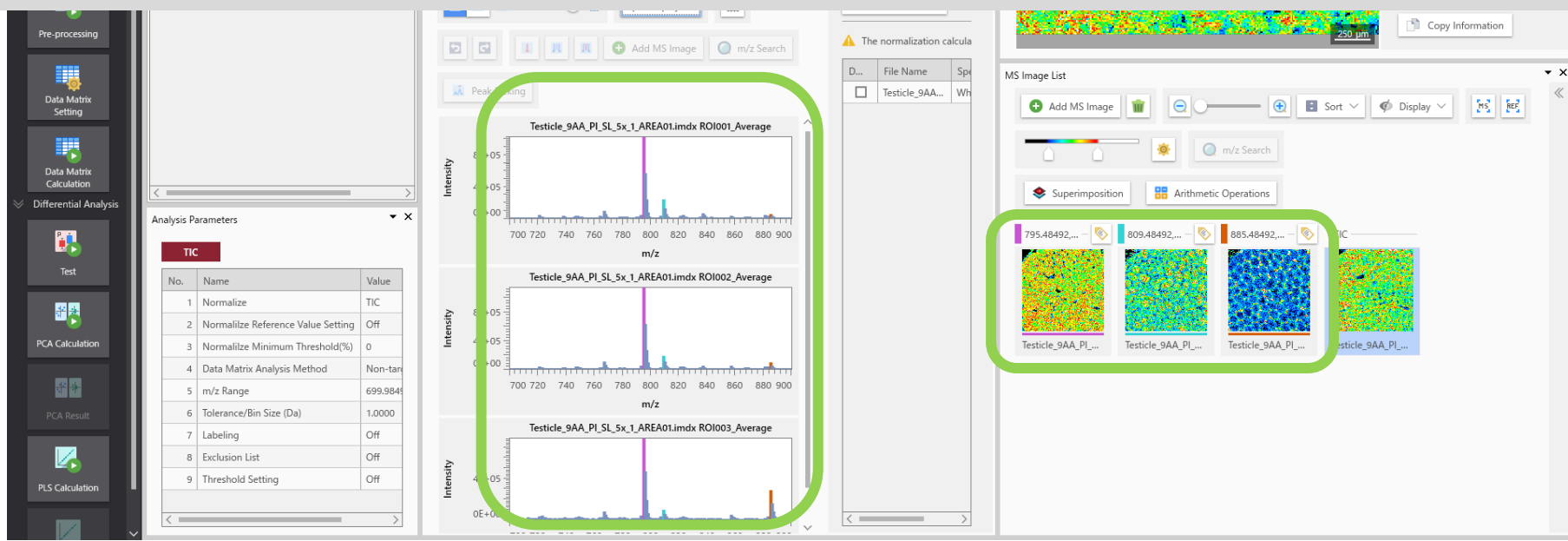
The 'MS Image List' panel is highlighted, showing a color palette with various colors (red, green, blue, yellow, etc.) and a hand cursor pointing to it, indicating that users can select colors for tagging.

The colour palette appears and colours can be selected.

Results of tagging



The colours selected in the MS image list will also be shown in the data matrix table and mass spectra.
✂ The tagging will not be reflected in the “File” mass spectra.



PCA results screen

