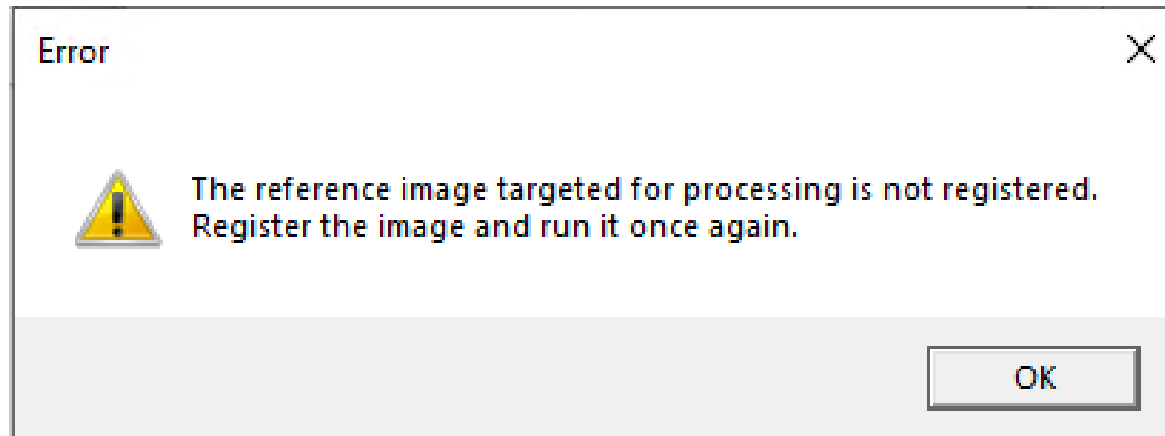


[Error]The reference Image targeted for processing is not registered. Register the image and run it once again.

An error occurred at similar image extraction.



- Reason of this error message :
 - Only images that have already been registered (aligned) can be used for similar image extraction.
- Solution
 - Perform registration.

Select "Image Registration".

The screenshot displays the IMAGEREVEAL software interface with the following components:

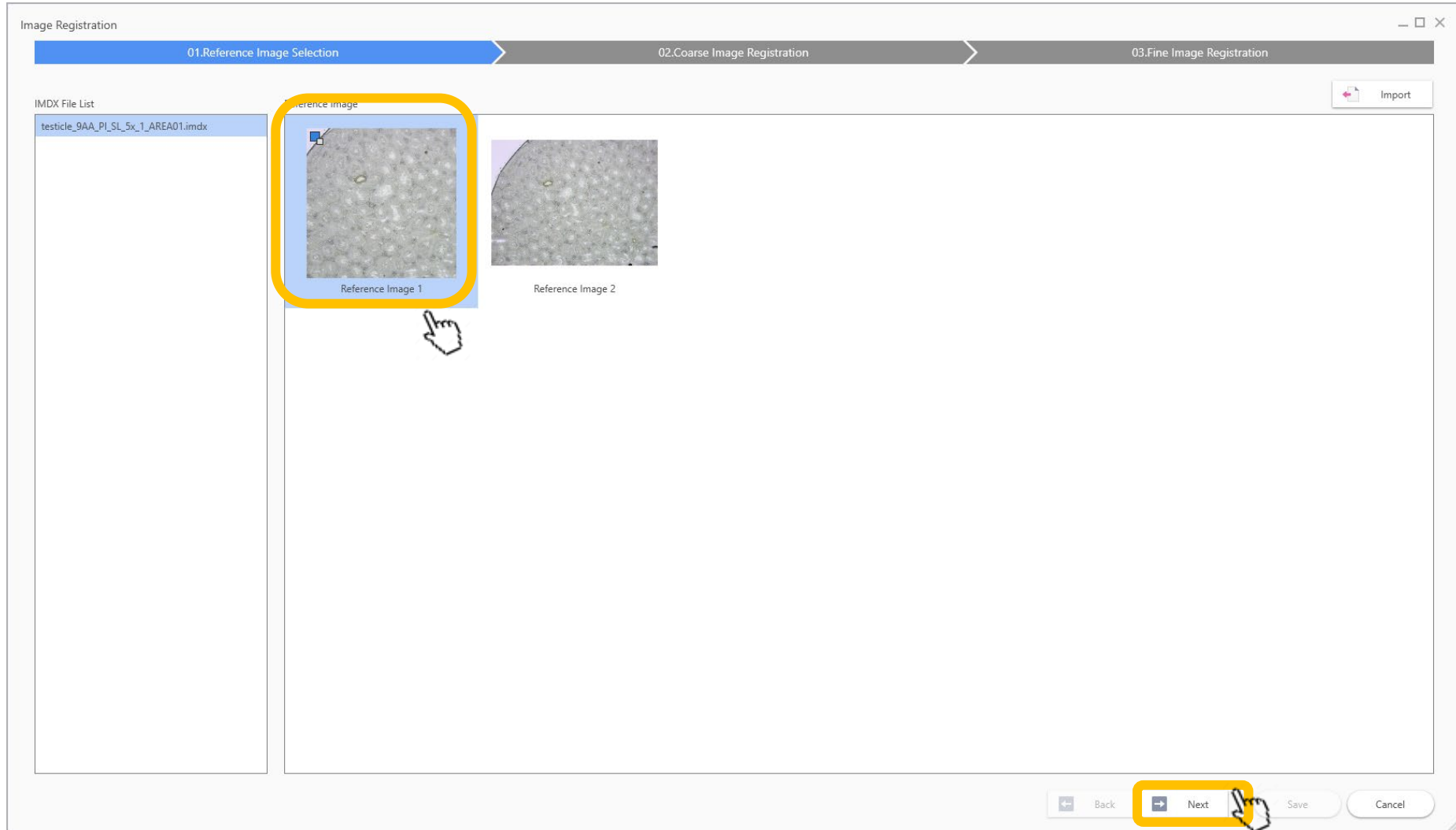
- Left Sidebar:** Contains navigation icons. The 'Image Registration' icon is highlighted with a yellow box and a hand cursor.
- ROI List Table:**

No.	Use	File Name	ROI Na...	Data Points
1		testicle_9A...	All	62500
2	✓	testicle_9A...	ROI001	229
3	✓	testicle_9A...	ROI002	165
4	✓	testicle_9A...	ROI003	174
5	✓	testicle_9A...	ROI004	95
6	✓	testicle_9A...	ROI005	60
7	✓	testicle_9A...	ROI006	66
8	✓	testicle_9A...	ROI007	42
9	✓	testicle_9A...	ROI008	23
10	✓	testicle_9A...	ROI009	65
11	✓	testicle_9A...	ROI010	32
12	✓	testicle_9A...	ROI011	39
13	✓	testicle_9A...	ROI012	73
14	✓	testicle_9A...	ROI013	50
15	✓	testicle_9A...	ROI014	121
16	✓	testicle_9A...	ROI015	52
- Data Matrix Table:**

No.	Use	Tag	Label	m/z	ROI001	ROI002
478	✓		795.3849-795.5849	795.4849	4596390.732	3643019.506
483	✓		796.3849-796.5849	796.4849	2229391.852	1822232.476
488	✓		797.3849-797.5849	797.4849	838283.507	668736.446
548	✓		809.3849-809.5849	809.4849	807485.833	359008.090
553	✓		810.3849-810.5849	810.4849	398323.244	176151.544
338	✓		767.3849-767.5849	767.4849	373929.741	254861.319
479	✓		795.5849-795.7849	795.6849	320343.988	253179.620
493	✓		798.3849-798.5849	798.4849	236201.792	208191.376
484	✓		796.5849-796.7849	796.6849	210014.686	177592.570
688	✓		837.3849-837.5849	837.4849	206846.633	207046.782
481	✓		795.9849-796.1849	796.0849	177317.467	147077.951
480	✓		795.7849-795.9849	795.8849	165099.672	138982.069
343	✓		768.3849-768.5849	768.4849	163828.785	105353.659
558	✓		811.3849-811.5849	811.4849	158251.453	89747.021
108	✓		721.3849-721.5849	721.4849	148742.186	72643.238
- Analysis Parameters:**

No.	Name	Value
1	Normalize	None
2	Data Matrix Analysis Method	Non-target
3	m/z Range	699.98492-900.01906
4	Tolerance/Bin Size (Da)	0.2000
5	Labeling	Off
6	Exclusion List	Off
7	Threshold Setting	Off
- Graph:** Displays two mass spectra. The top spectrum is labeled 'testicle_9AA.PI_SL_5x_1_AEA01.imdx Spot(70, 6)' and shows peaks at m/z 795.3816, 796.42520, and 797.42374. The bottom spectrum shows peaks at m/z 711.39086, 767.49382, 817.25340, and 869.25774.
- MS Image:** Shows a color-coded mass image with a scale bar from 0 to 250 μm. A 'Copy Information' button is visible.
- MS Image List:** Contains a table with one entry: 'testicle_9AA.PI...'. It includes buttons for 'Add MS Image', 'Sort', 'Display', 'Superimposition', and 'Arithmetic Operations'.

Select an image to use as a reference image.



If there are no reference image, import first.

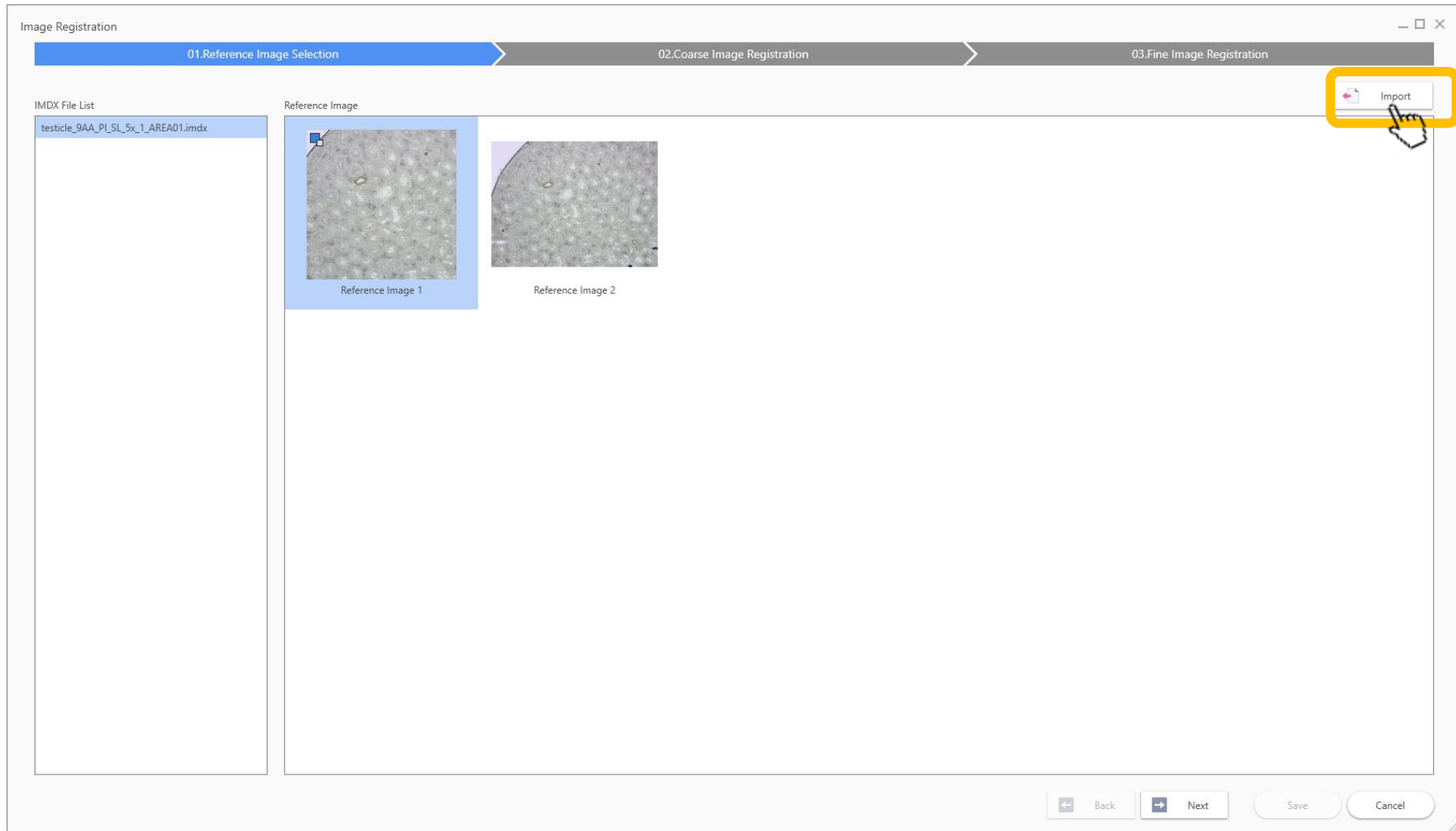
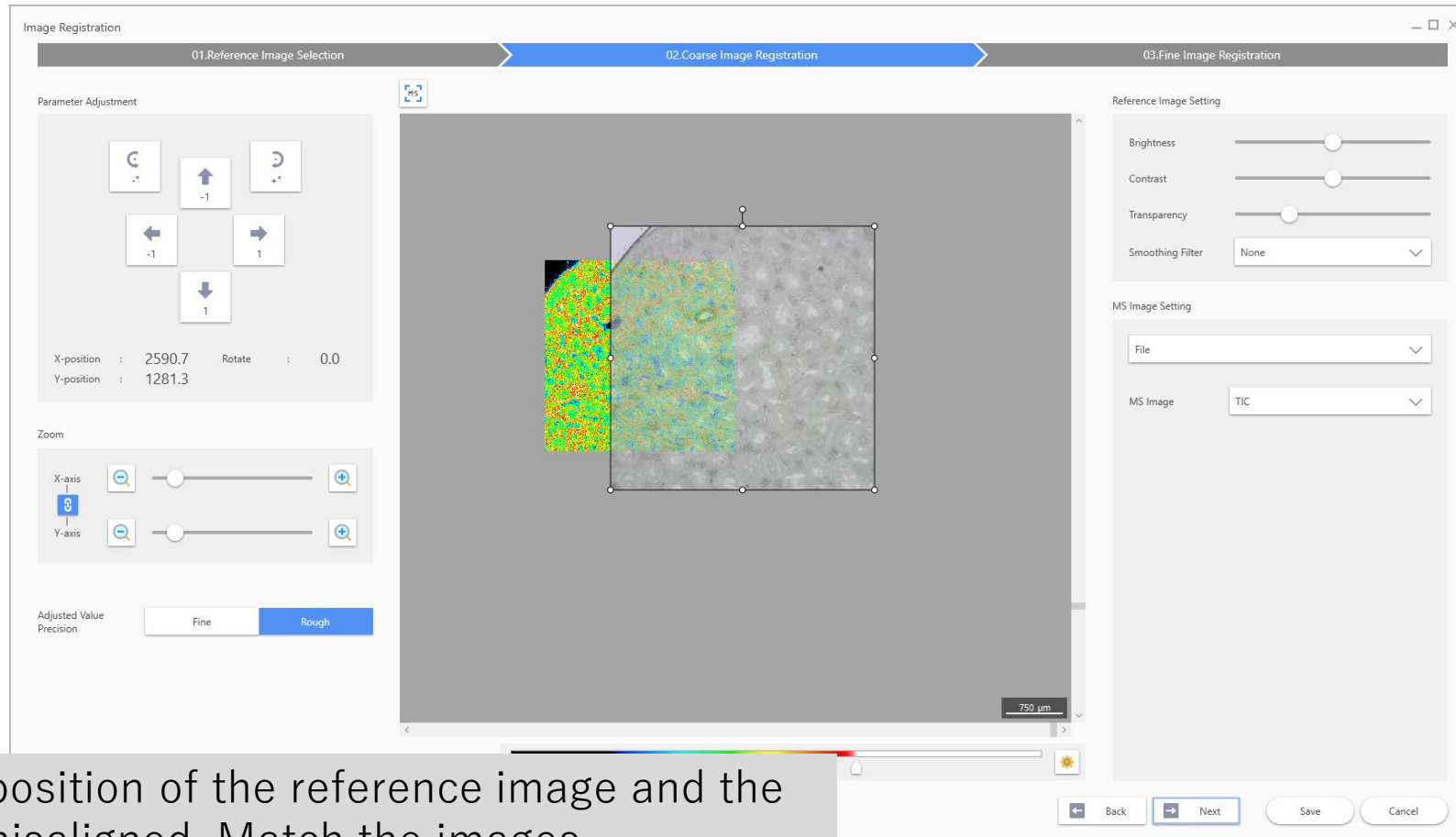
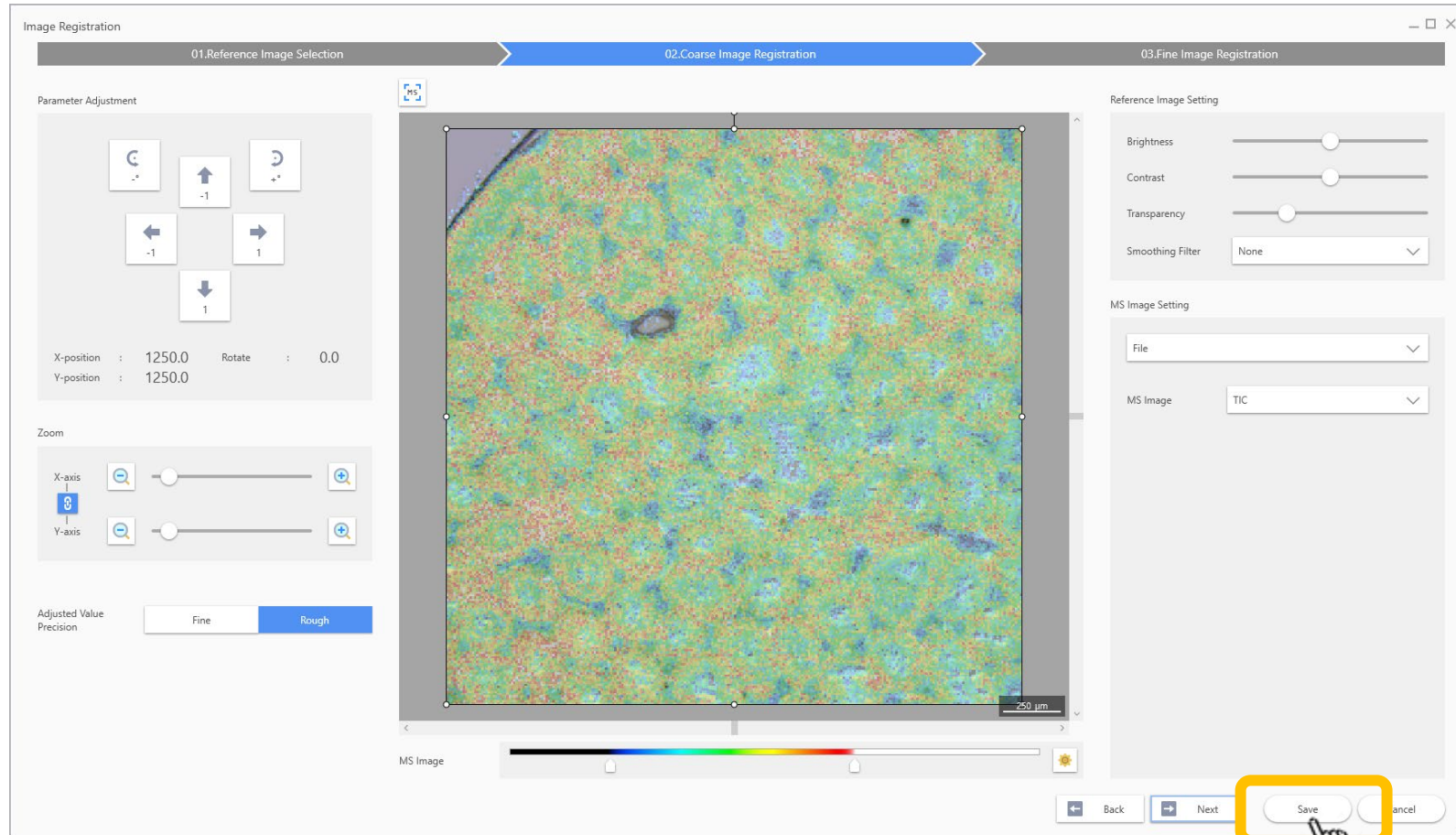


Image registration window



In general, the position of the reference image and the MS image are misaligned. Match the images.

Save it after registration.



See "Image Registration" in the manual for details.