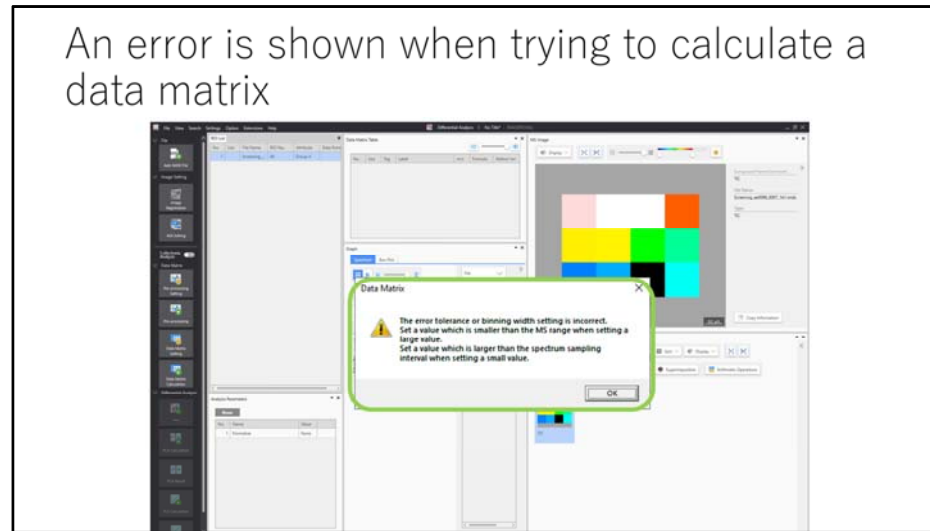


If you cannot enter a small value when specifying the bin width in non-target analysis

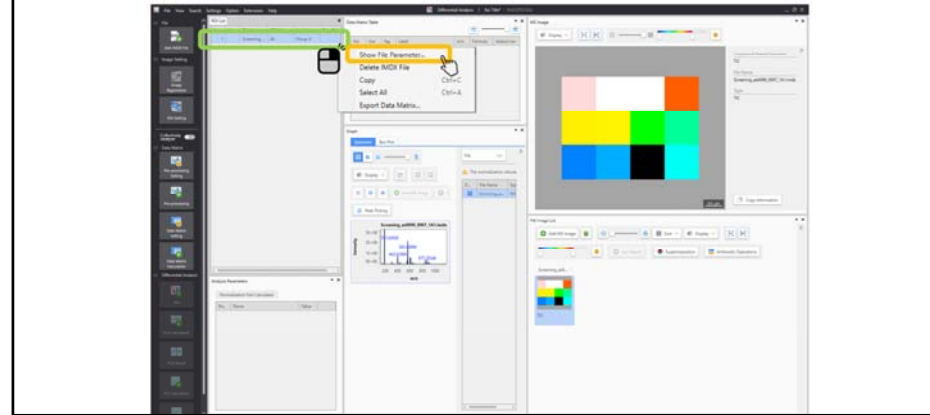
An error is shown when trying to calculate a data matrix



The error tolerance or binning setting is incorrect. Set a value which is smaller than the MS range when setting a large value.

Set a value which is larger than the spectrum sampling interval when setting a small value.

To confirm the sampling interval:



Right click on the ROI list and select “Show File Parameter”

File Parameters

The screenshot shows a 'File Parameter' dialog box with a 'File Path' field and two tables: 'Measurement Parameter' and 'Conversion Parameter'. The 'Conversion Parameter' table has a green box around the 'Sampling Interval' and 'Sampling Rate Type' rows.

No.	Name	Value
1	PreTreatment Name	
2	Measurement Start Date	
3	Scan Name	
4	Sample ID/Sample Name	
5	PreTreatment	
6	Matrix	
7	Comments	
8	Sampling Date	
9	Animal Species	
10	Age	
11	Sex	
12	Organ	
13	Cell	
14	Area No.	1
15	Pinch N	100um
16	Pinch S	100um
17	Polarity	
18	Starting inch	131.89548
19	Ending inch	138.19548
20	Data Point(s)	40points

No.	Name	Value
1	Input Data Type	in=00, Processed
2	Output Data Type	in=00 (calculated from combined)
3	Original File Name	ac008_2007_101_0001.m004
4	Reference Image File Name	
5	Starting inch of Original File	131.89548
6	Ending inch of Original File	138.19548
7	Name Car Number(s)	
8	Sampling Interval	0.1
9	Sampling Rate Type	Constant

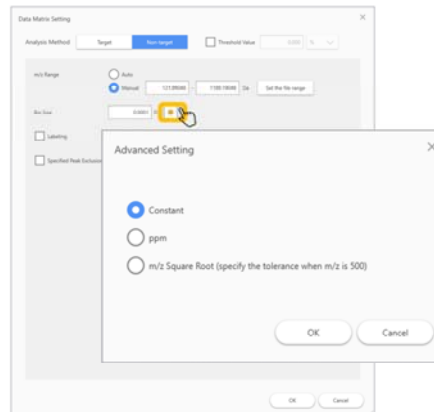
File Log

Date	Check
------	-------

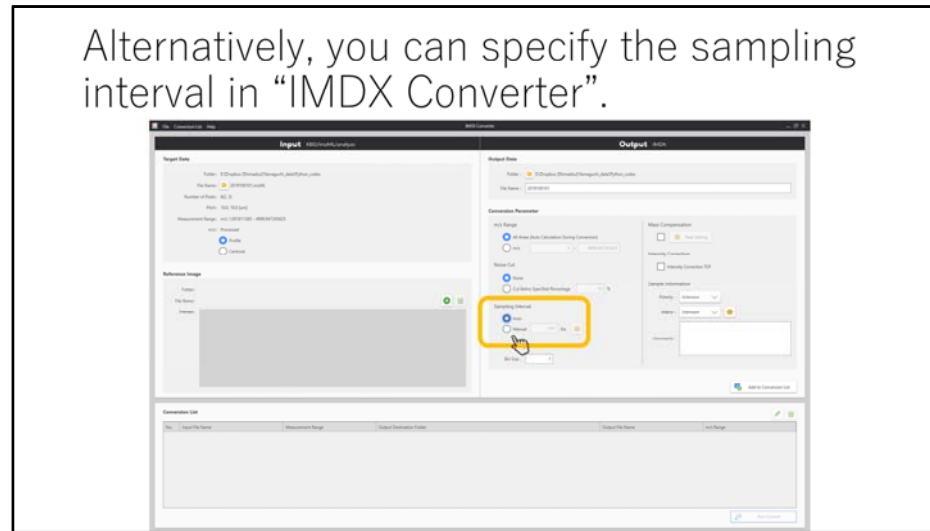
Whether the sample interval is displayed or not depends on the data file.

Whether the sample interval is displayed or not depends on the data file.

You can change the bin size setting:

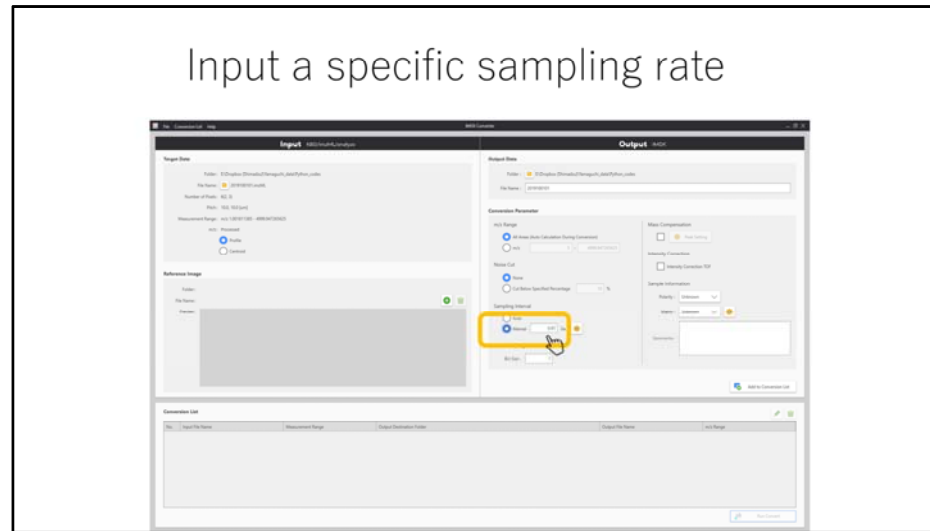


Alternatively, you can specify the sampling interval in “IMDX Converter”.



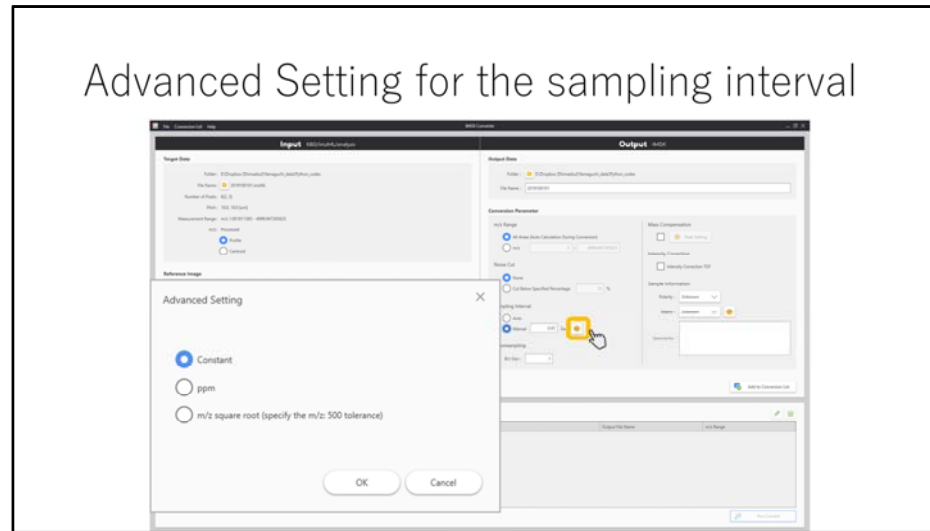
Select “Manual” under “Sampling Interval”

Input a specific sampling rate



You can specify the sampling interval.

Advanced Setting for the sampling interval



You can also change the unit of the sampling interval as an “Advanced Setting“