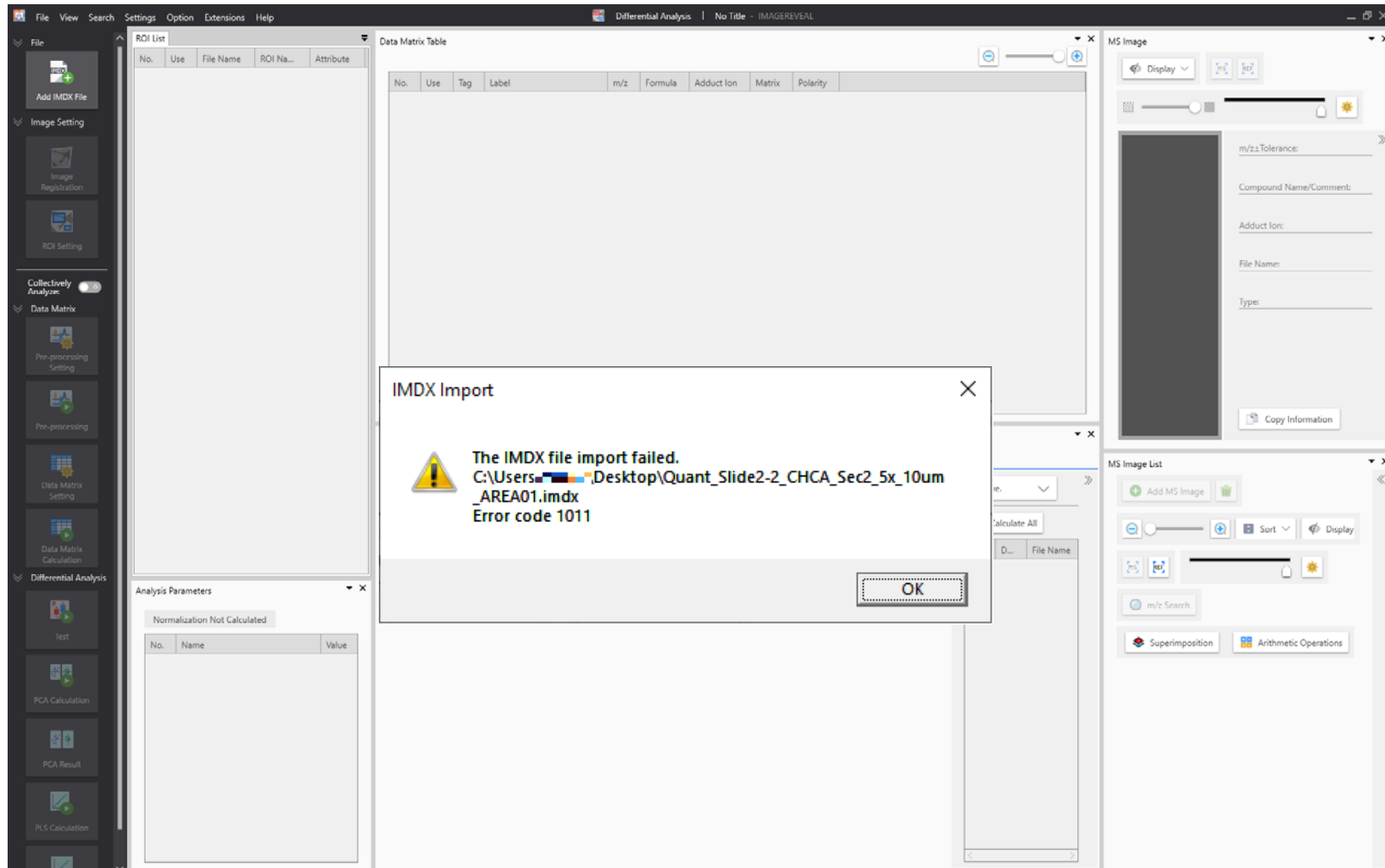


If the IMDX file cannot be
imported with error code
1101

Error code

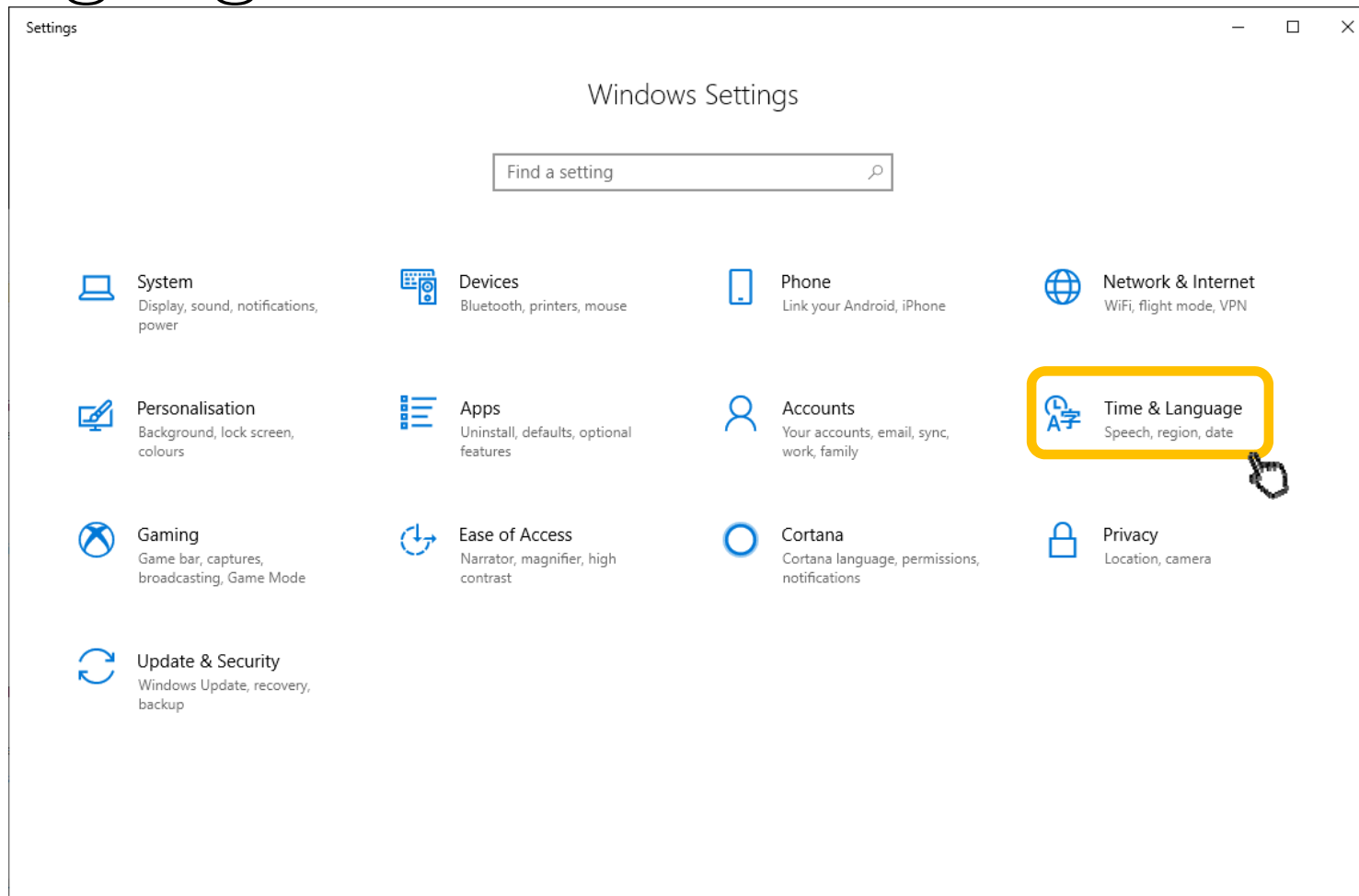


There are a few possible causes

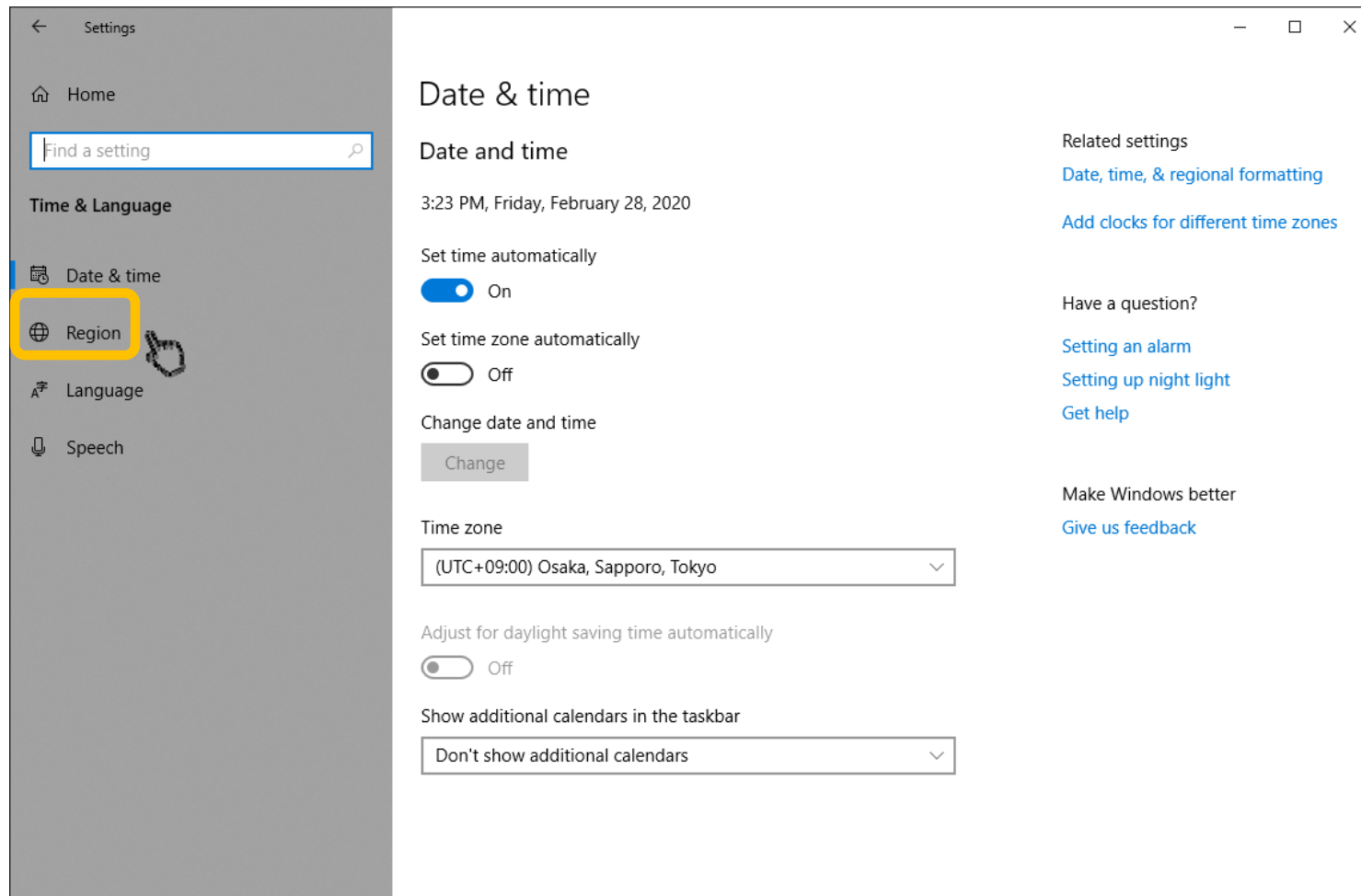
1. The language settings in Windows are not appropriate
2. There are variable-width characters in the file name or path

The language settings in
Windows are not appropriate

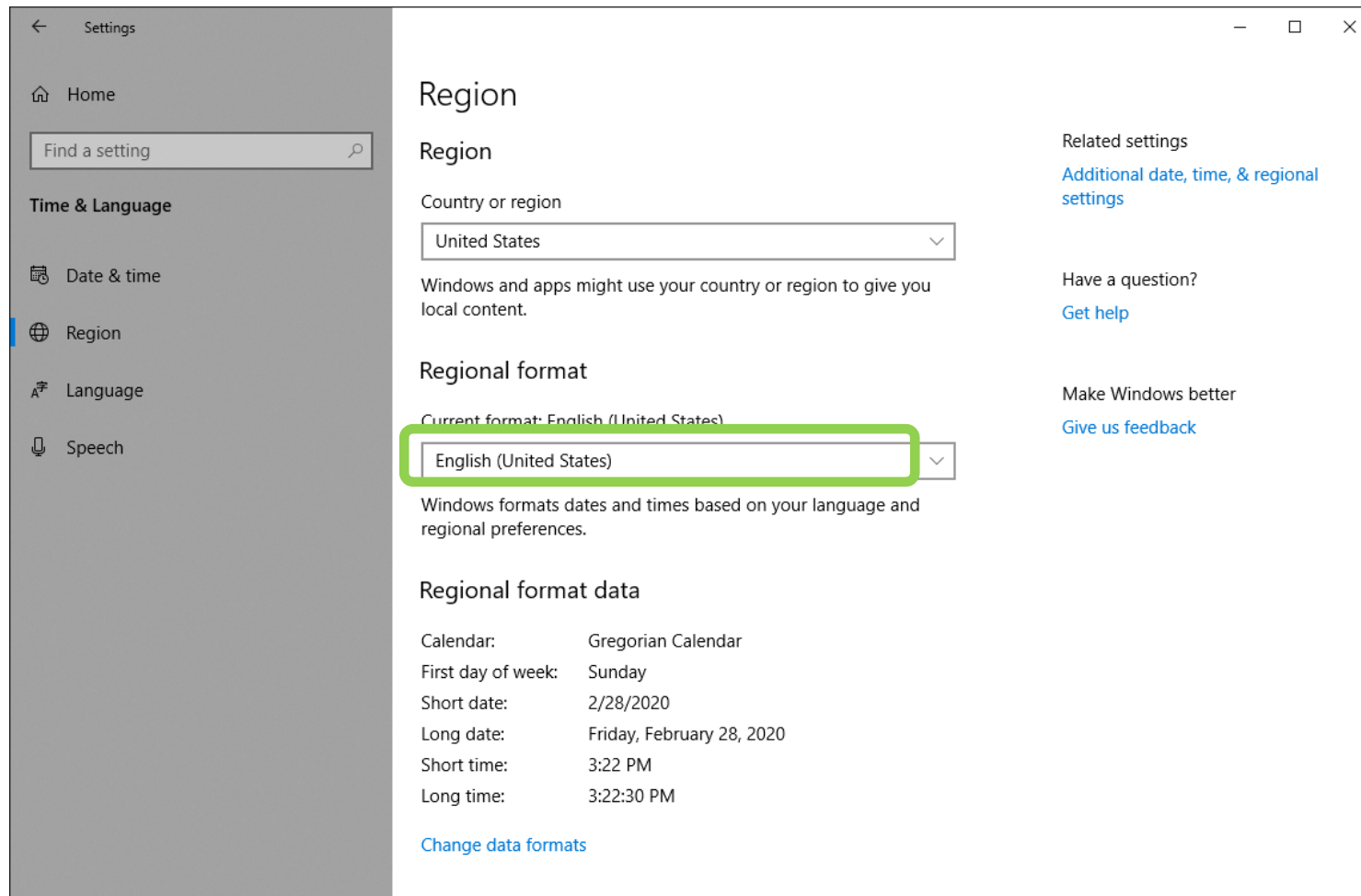
Go to “Windows Settings” and select “Time & Language”



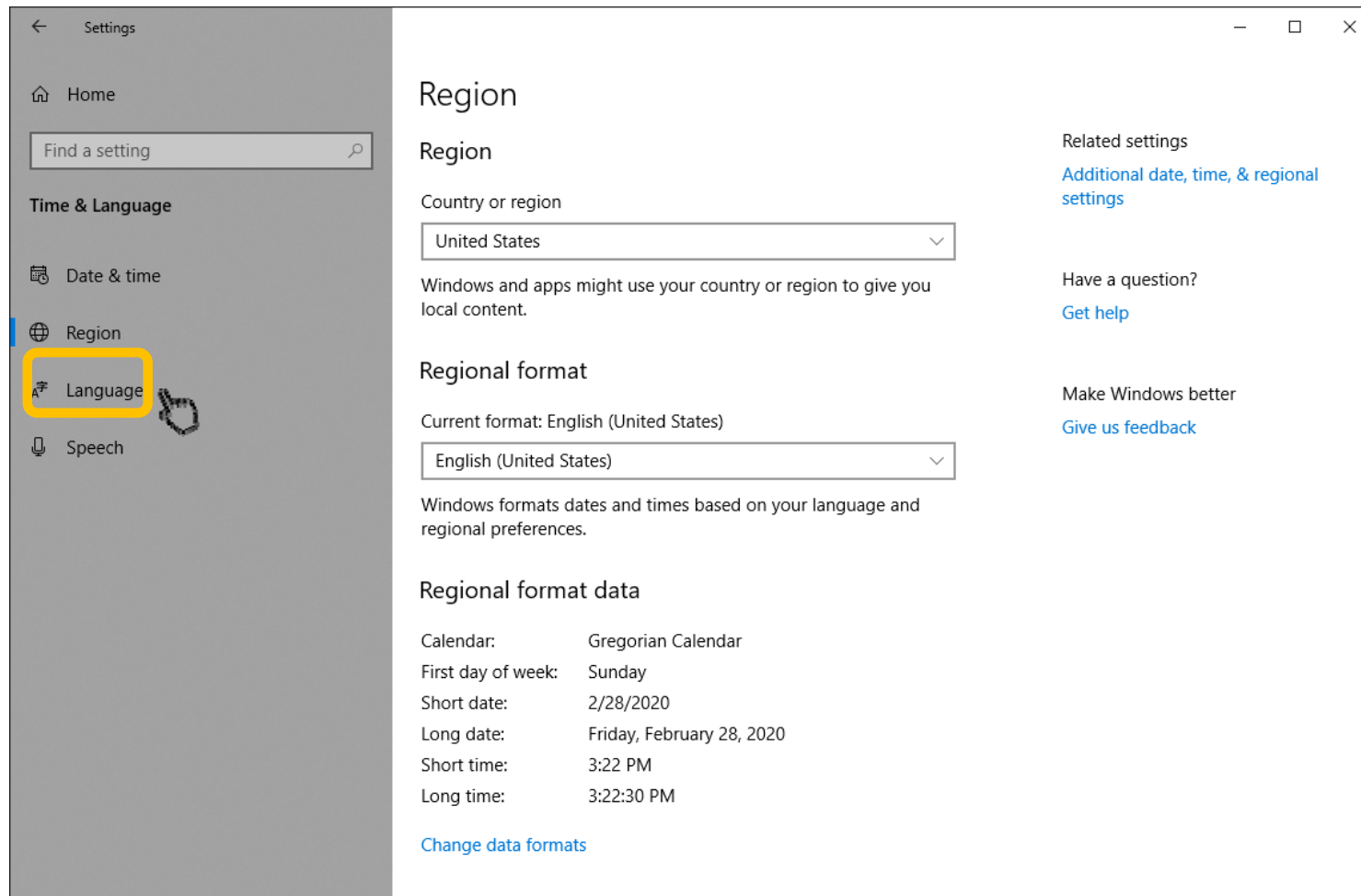
Select “Region”



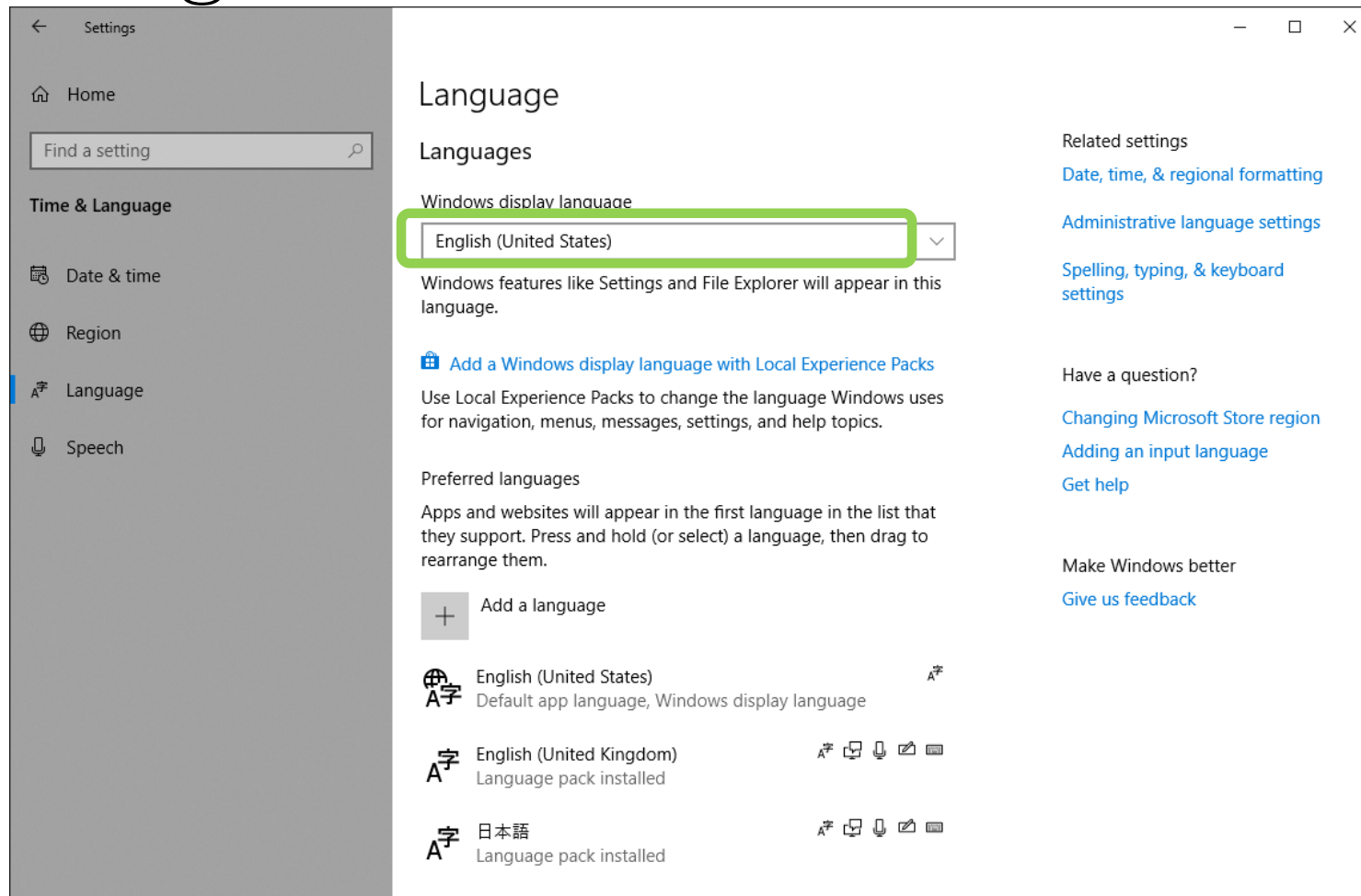
Check that the “Current format” is set to English



Next, select “Language”

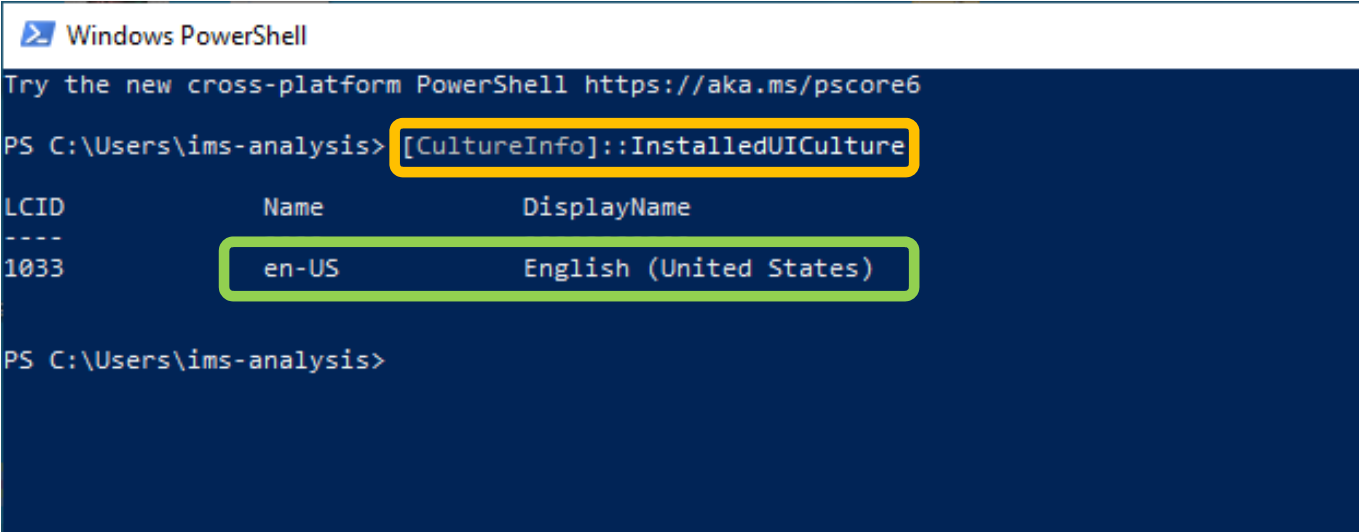


Check that “Windows display language” is set to English



- Windows 10 (64-bit) in English or Japanese is officially supported
- Other languages are not supported

How to check Windows 10 language at the time of installation



```
Windows PowerShell
Try the new cross-platform PowerShell https://aka.ms/pscore6
PS C:\Users\ims-analysis> [CultureInfo]::InstalledUICulture
LCID      Name      DisplayName
----
1033      en-US     English (United States)
PS C:\Users\ims-analysis>
```

Go to Powershell and enter
“[CultureInfo]::InstalledUICulture”

There are variable-width characters in the file name or path

(This doesn't necessarily mean you will not be able to import the file)

If there are variable-width (full-width) characters in the file name or file path, you may not be able to import the file

