

SMG600 Series

Low-noise gear pump, Cast-iron body



C621-E026A

◆ Model number

SMG600 | **B** | **40** | **A** | **1** | **H** | **1** | **-** | **L** | **XXX**

1
 2
 3
 4
 5
 6
 7
 8
 9

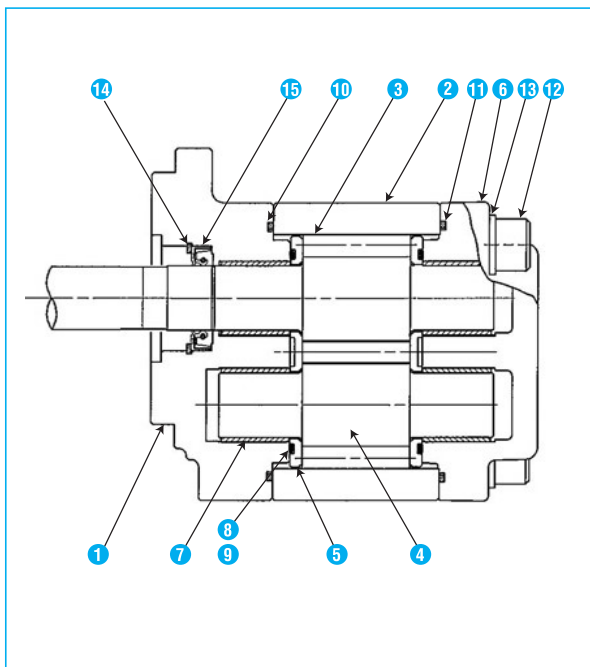
- | | | | |
|--|--|---|---|
| <p>1 Series number
SMG600 series</p> <p>2 Mounting spigot diameter
- : $\phi 82_{-0.090}^{-0.036}$ Z : $\phi 102_{-0.090}^{-0.036}$
A : $\phi 82.55_{-0.05}^{-0.05}$ B : $\phi 101.6_{-0.05}^{-0.05}$</p> <p>3 Size</p> | <p>4 Position of ports
A : body side ports
D : rear ports</p> <p>5 Port configuration
1 : flange port
2 : G screw thread</p> | <p>6 Mounting
H : horizontal 2 bolts</p> <p>7 Shaft end
1 : SAE Spline 13 teeth
6 : SAE Spline 15 teeth</p> | <p>8 Rotation viewing from shaft end
L = counterclockwise
R = clockwise</p> <p>9 Code number in 3 figures</p> |
|--|--|---|---|

◆ Specifications

Size	Displacement		Rated pressure			Max. peak pressure			Speed min ⁻¹		Inlet pressure	Mass	
	cm ³	in ³	MPa	bar	psi	MPa	bar	psi	MIN.	MAX.		kg	lb
40	41.7	2.544	23.0	230	3335	27.6	276	4002	500	3000	bar -0.20~ 2.0	7.1	15.62
44	46.1	2.812										7.3	16.06
48	50.4	3.074									7.5	16.50	
52	54.1	3.300									7.7	16.94	
56	57.8	3.526									7.9	17.38	
60	62.1	3.788	21.0	210	3045	25.0	250	3625	3000 (2600)	MPa -0.02~ 0.2	8.2	18.04	
									3000 (2400)		7.9	17.38	
									3000 (2300)		psi -2.9 ~29	8.2	18.04

NOTE : () Inlet port $\phi 32$

◆ Typical assembly



Item No.	Name	QTY	Material
1	Front cover	1	Aluminum alloy
2	Body	1	Cast iron
3	Drive gear	1	Alloy steel
4	Driven gear	1	Alloy steel
5	Side plate	2	Special alloy steel
6	Rear cover	1	Aluminum alloy
7	Bush	4	Special alloy steel
8	Gasket	2	Nitrile rubber
9	Back-up	2	Synthetic resin
10	Gasket	1	Nitrile rubber
11	Gasket	1	Nitrile rubber
12	Bolt	4	Alloy steel
13	Washer	4	Carbon steel
14	Retainer ring	1	Carbon tool steel
15	Oil seal	1	Nitrile rubber

NOTES : "QTY" shows the amount per one

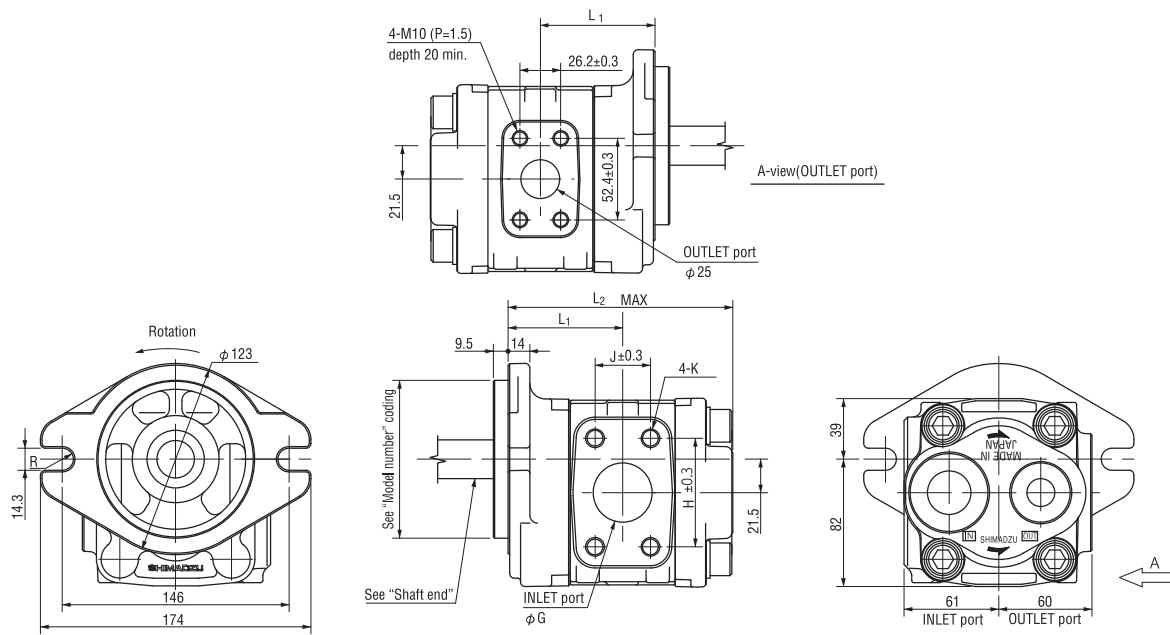
◆ Outline dimensions

dimensions in mm

SMG600_Z□A1H□-LXXX (Body side ports)

INLET PORT

Size	φ G	H	J	K	L/min
1-1/4	φ 32	58.7	30.2	M10 (P=1.5) depth 20	143
1-1/2	φ 38	69.9	35.7	M12 (P=1.75) depth 15	205



- NOTE 1. Figure shown indicated counterclockwise rotation “L” viewing from shaft end. Clockwise rotation “R” is mirror image of this.
2. Unless otherwise specified, tolerance on dimension are ± 1.0 mm.

Size	L ₁	L ₂
40	68.8	137
44	70.6	140
48	72.3	144
52	73.8	147
56	75.3	150
60	77.1	153

● Shaft end

SAE Spline (Some dimensions are different form SAE standard.)	
SAE Spline 13 teeth	SAE Spline 15 teeth
<p>No. of teeth : 13 D.P. : 16/32 Pressure angle : 30° Over pin dia. : 24.891~ 24.819 Pin dia. : φ3.048</p>	<p>No. of teeth : 15 D.P. : 16/32 Pressure angle : 30° Over pin dia. : 28.097~ 28.025 Pin dia. : φ3.048</p>