

# VANTED

## How to Create/Edit Metabolic Map



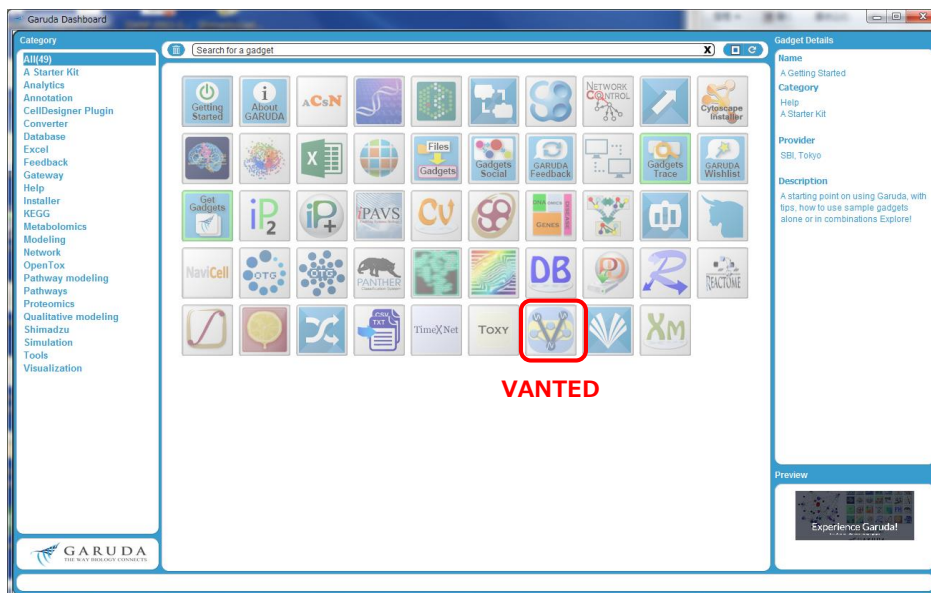
## Table of Contents

1. Start Garuda and VANTED .....	3
2. Create Metabolic Map .....	4
2. 1. Create a New Metabolic Map .....	4
2. 2. Create Boxes .....	5
2. 3. Change Boxes Layout .....	6
2. 4. Connect the boxes .....	8
2. 5. Change Lines Layout .....	9
2. 6. Display Compound Names .....	10
2. 7. Save .....	12
2. 8. Change Bars Layout .....	13

# 1. Start Garuda and VANTED

Start Garuda from a shortcut on your desktop.

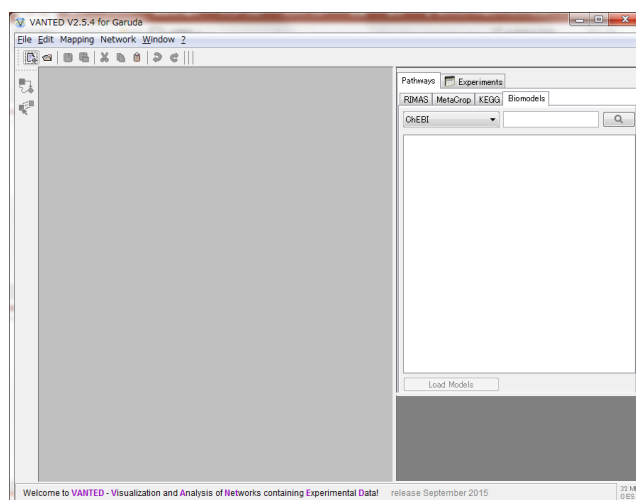
When Garuda starts up, the following screen appears.



VANTED

Click the VANTED icon to start it.

When VANTED starts up, the following screen appears.

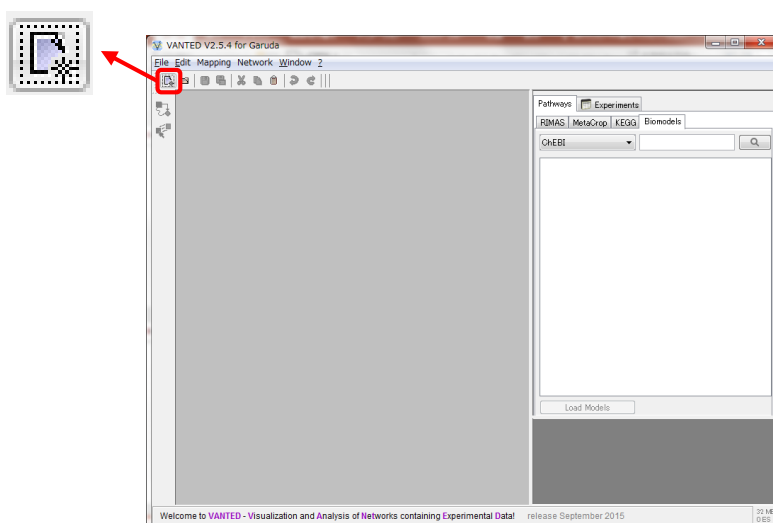


## 2. Create Metabolic Map

### 2. 1. Create a New Metabolic Map

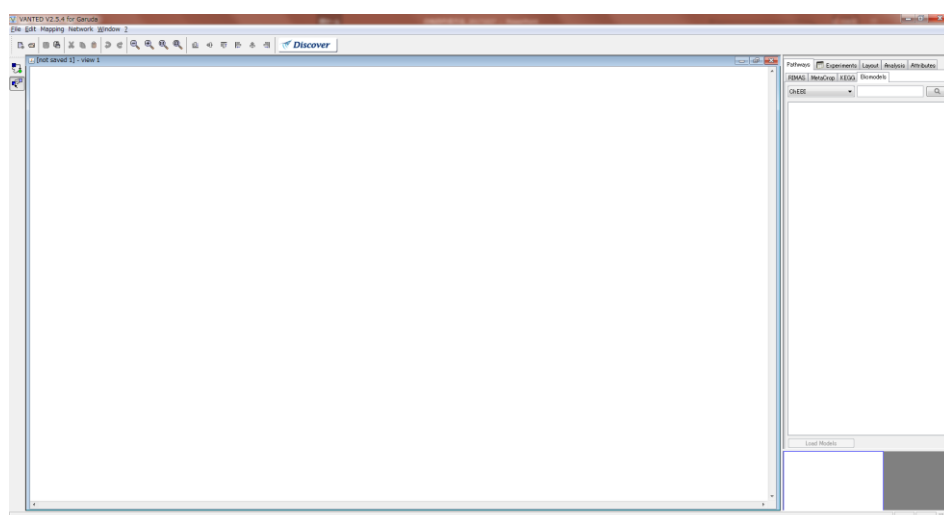
Creates a new metabolic map.

Click the [Open an empty graph] icon.



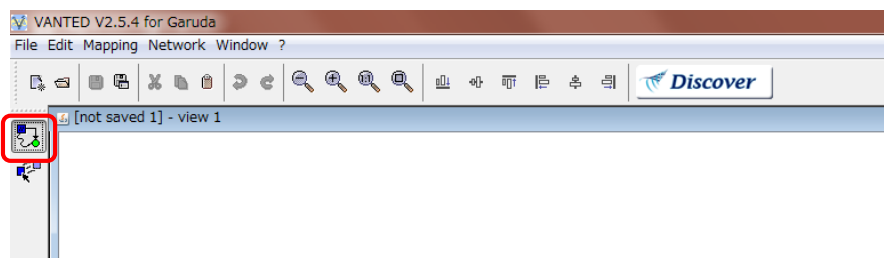
The following screen appears. Create a metabolism map on this screen.


As an example, create a metabolic map for the TCA cycle.




## 2. 2. Create Boxes

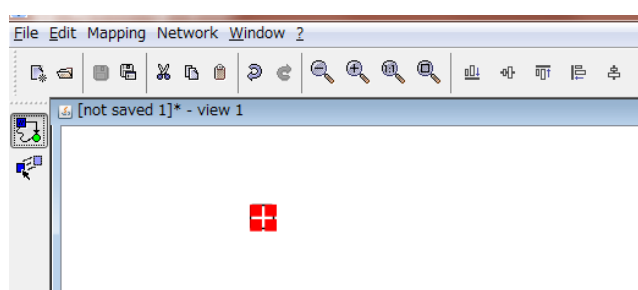
Create the boxes required for the metabolic map.  
First, click the following icon.



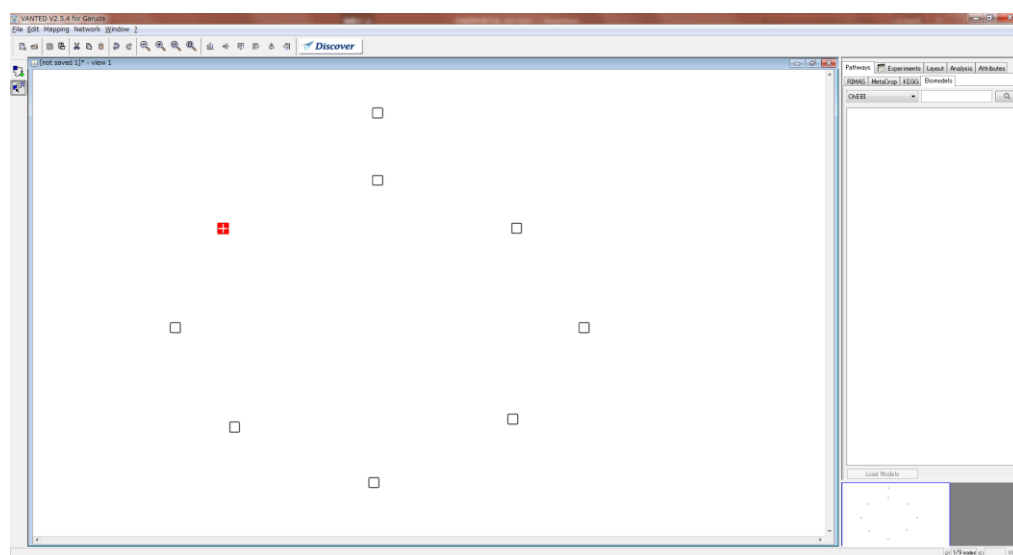
\*  use to create boxes or connect boxes together.

 use to select boxes and lines.

Click to create a box.



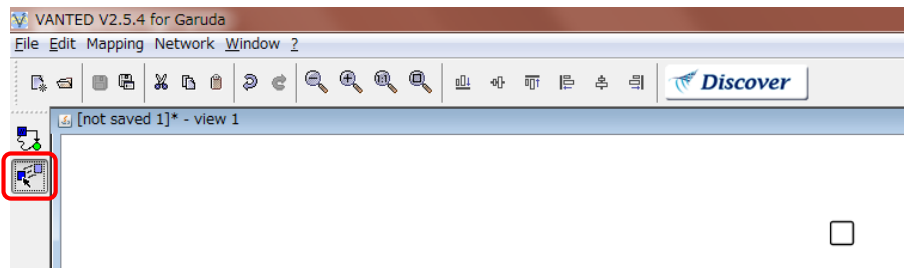
Create boxes as needed for the TCA cycle.



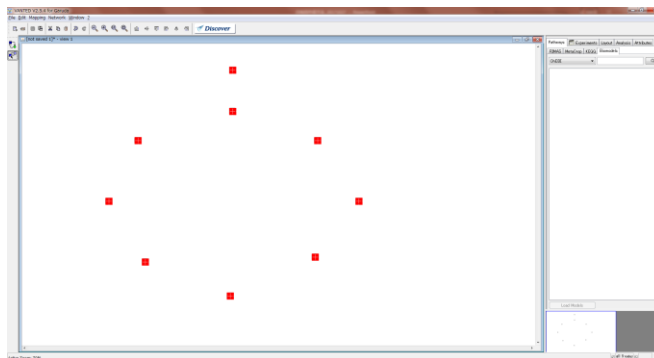
## 2. 3. Change Boxes Layout

Change the layout, such as the size and color of the boxes you create.

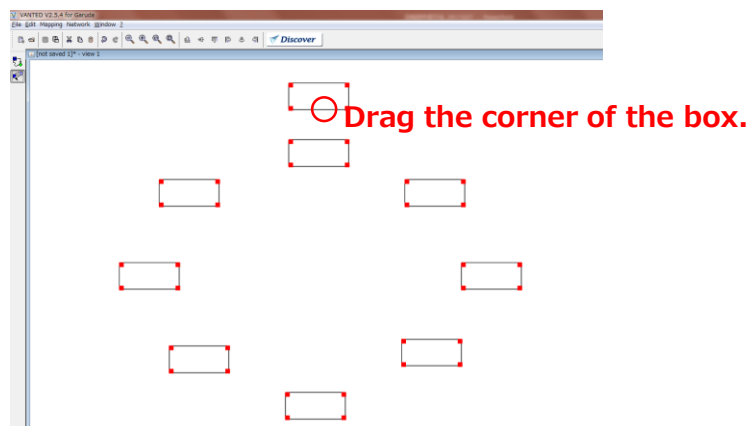
Click the icon below to select the box. After clicking the icon, click the box whose layout you want to change.



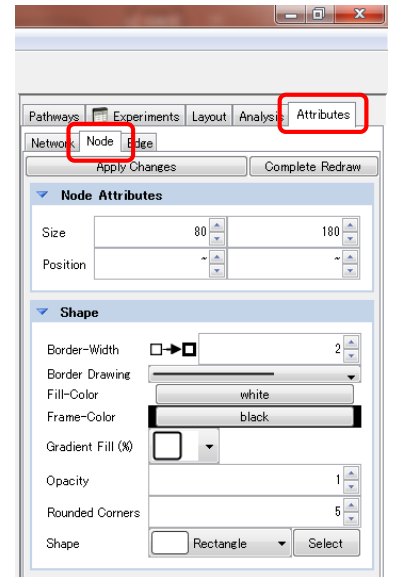
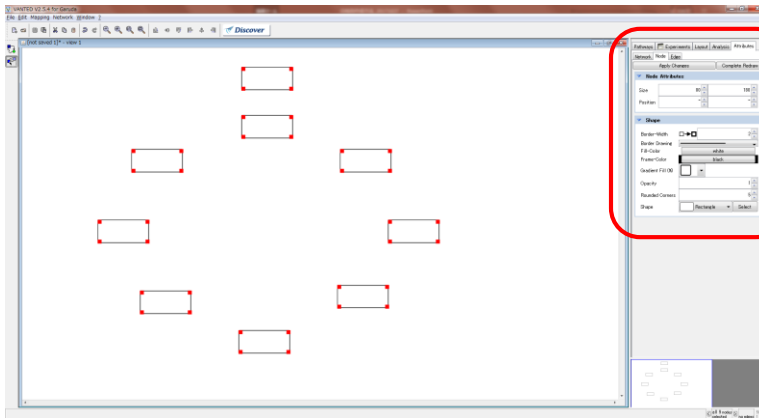
\*If you want to change the layout of multiple boxes in the same way, you can select multiple boxes by dragging the target boxes.



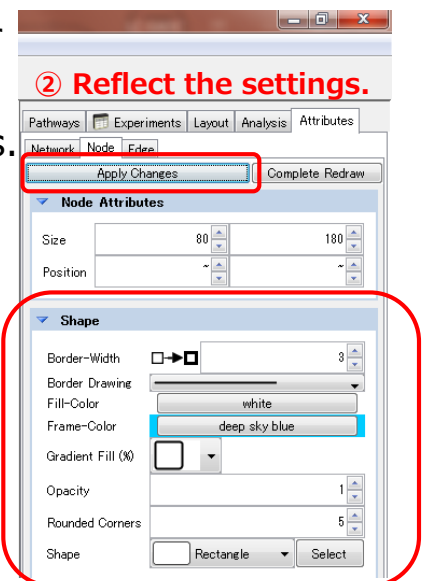
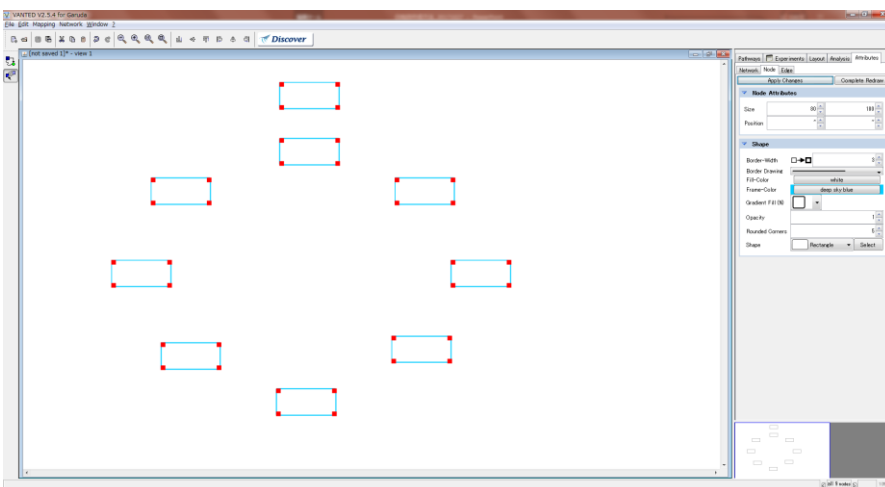
You can resize the box by dragging its corners.



Change the color of the box from [Attributes] → [Node] on the right side of the screen.

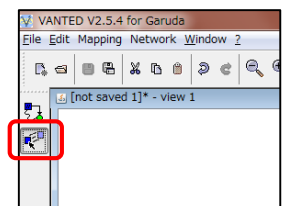


Set the line thickness and color of the outer frame of the box as shown on the right. Click [Apply Changes] to reflect the settings.



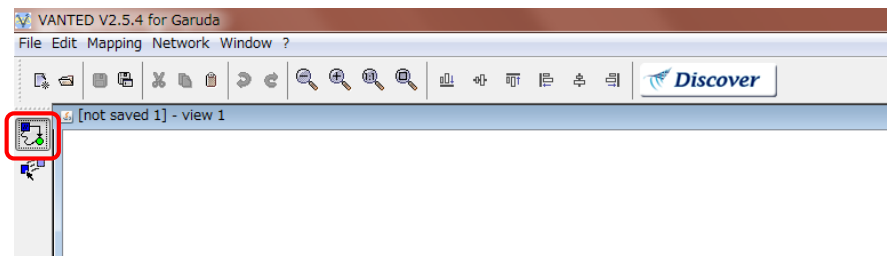
① Set the box layout.

\*If you want to adjust the position of the box and it is in the right mode, you can select the box you want to adjust the position and adjust the position.

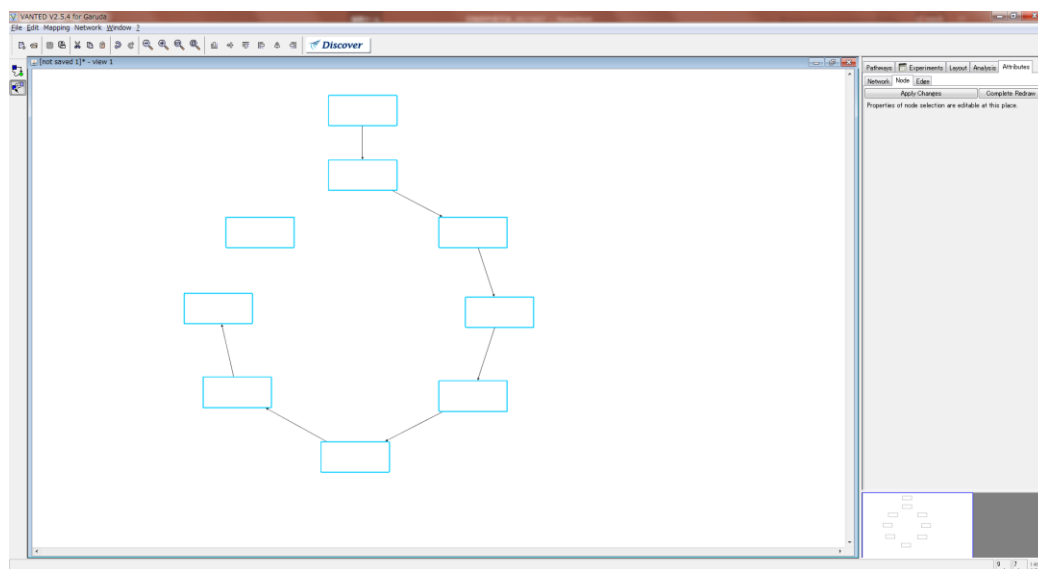


## 2. 4. Connect the boxes

Connect the boxes with lines. Change to the following mode.



Drag the boxes you want to connect together.



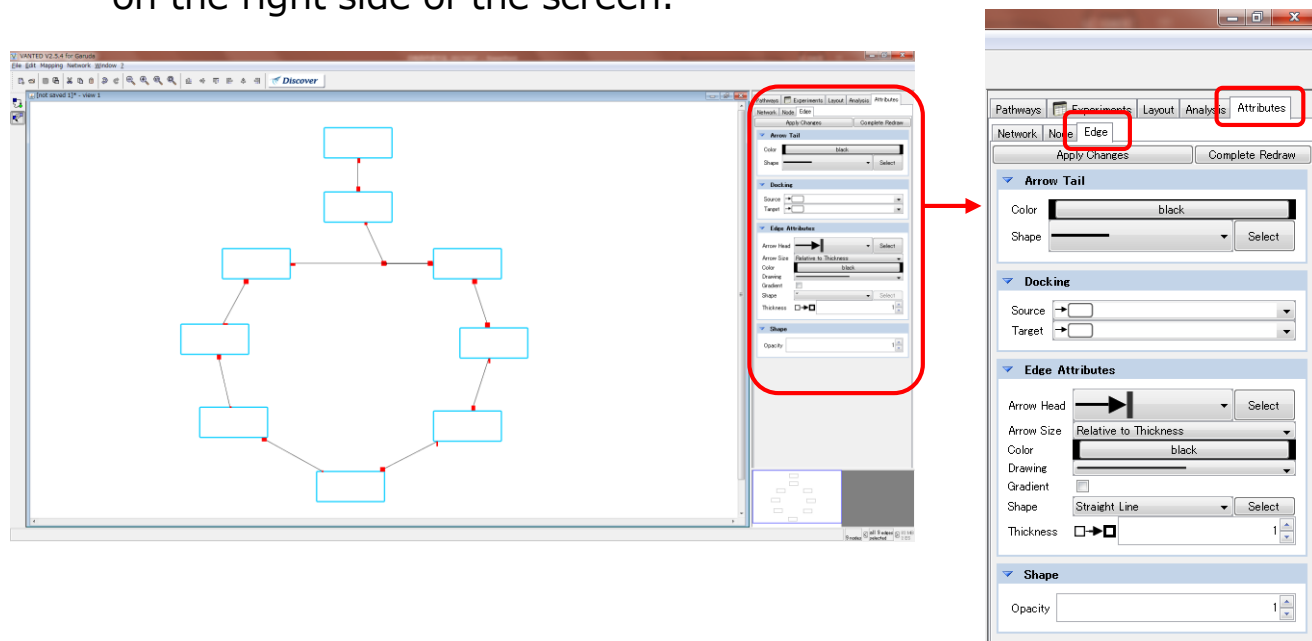
If you want to erase a line, click the line you want to erase to select it and press the Delete button on your keyboard to erase it.



## 2. 5. Change Lines Layout

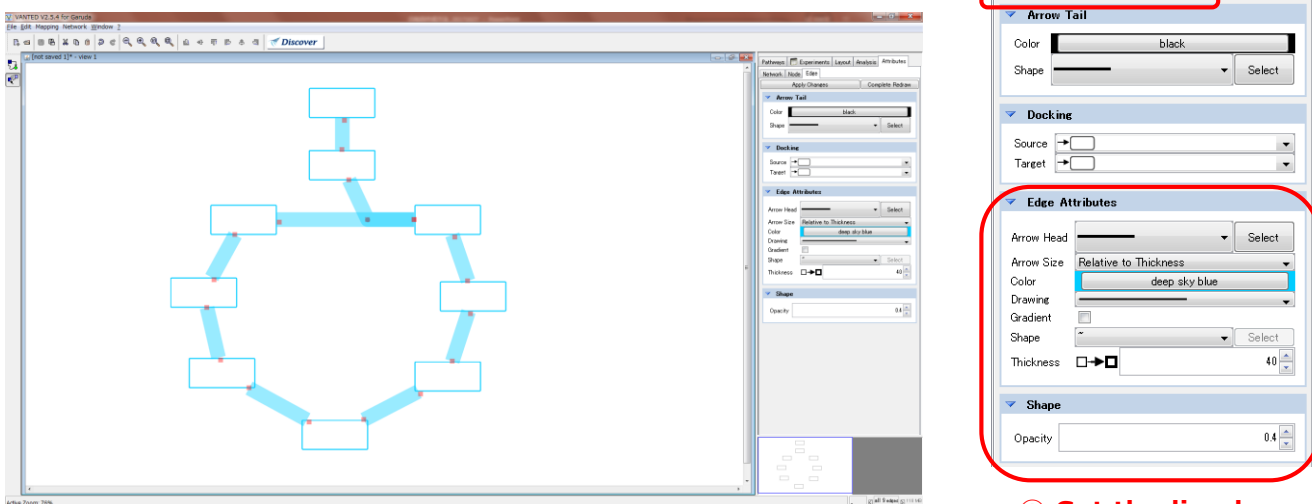
Change the layout of the lines connecting the boxes.

Select a line and change the line color from [Attributes] → [Edge] on the right side of the screen.



Set the line type, color, and thickness as shown on the right.

Click [Apply Changes] to reflect the settings.



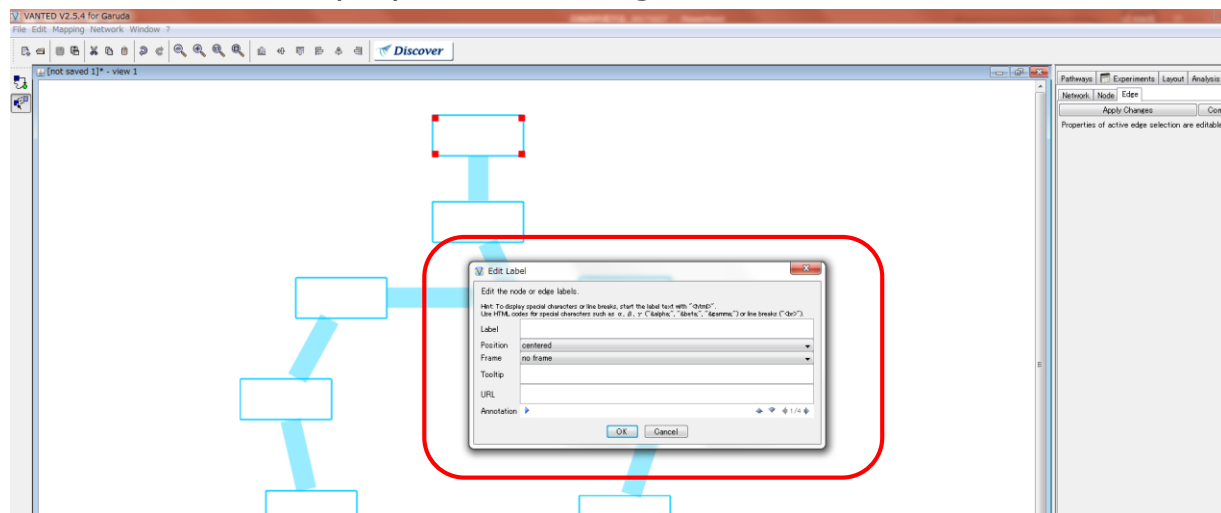
① Set the line layout.

② Reflect the settings.

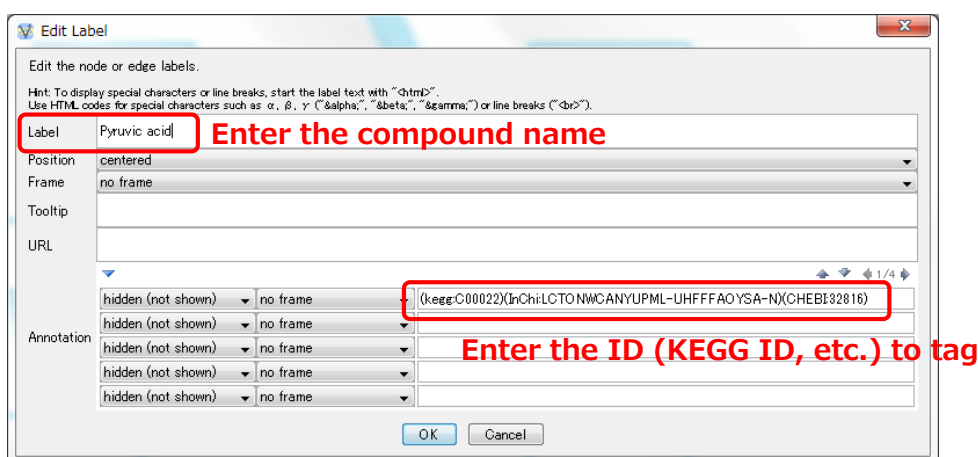
## 2. 6. Display Compound Names

Displays the name of the compound in the box.

Select the box in which you want to enter the name of the compound and click to display the following screen.

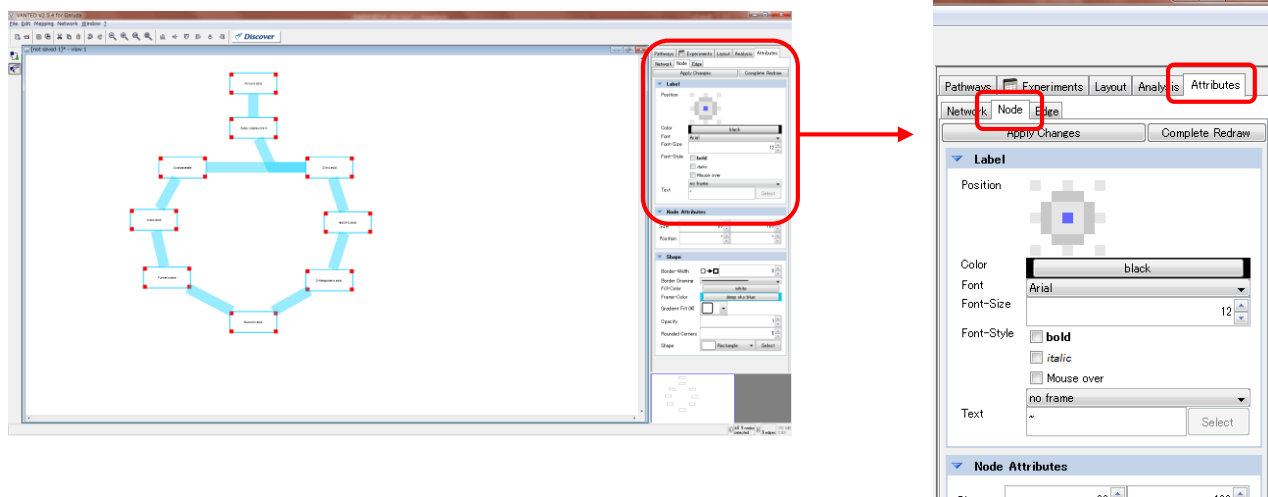


Enter the name of the compound and the information required to tag it.



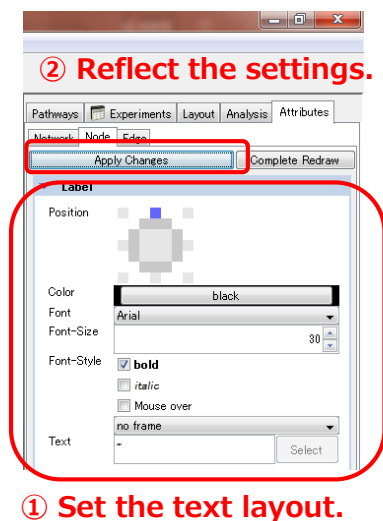
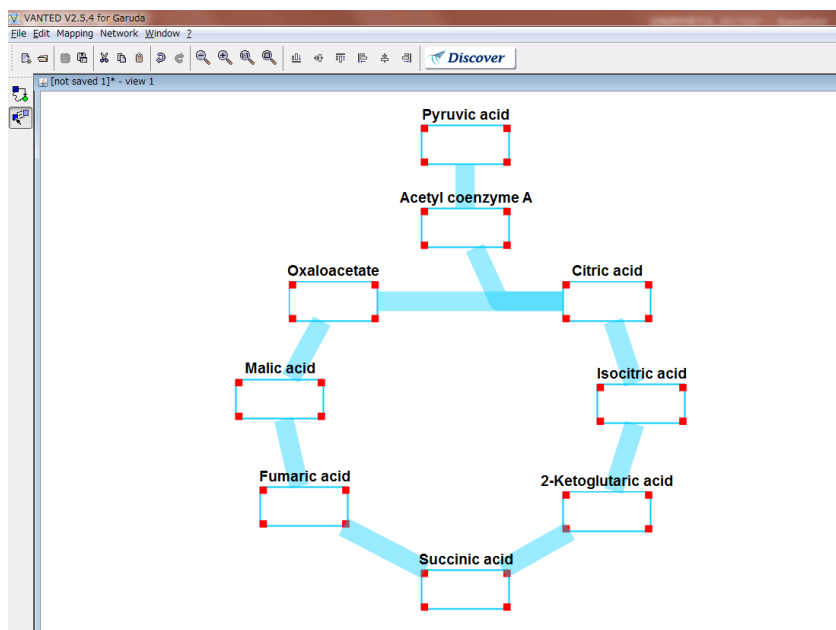
Change the position of the compound name and the layout of the text.

Select the box and change it from [Attributes] → [Node] on the right of the screen.



Set the position where the compound name is to be displayed, and the layout of the text as shown on the right.

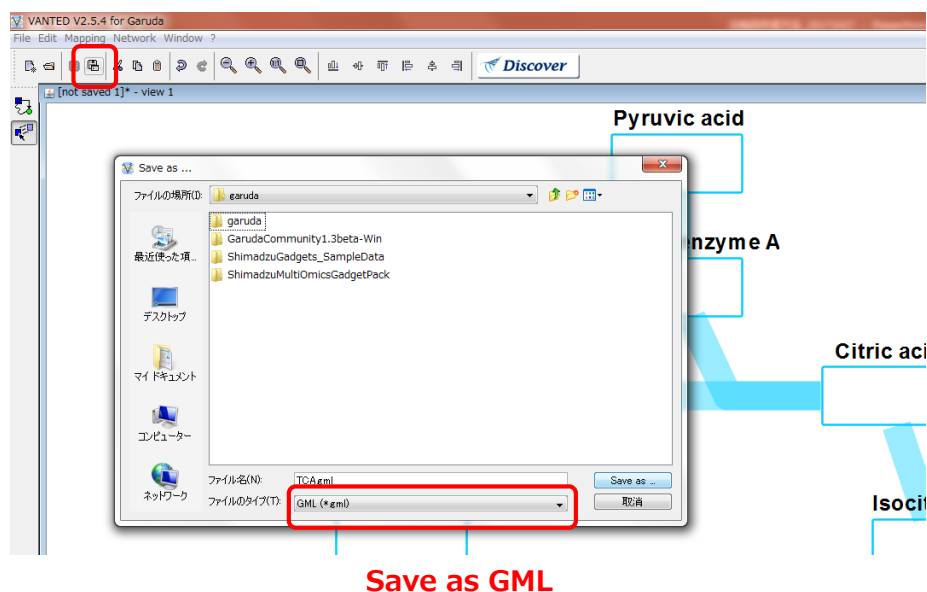
Click [Apply Changes] to reflect the settings.



## 2. 7. Save

Save the metabolic map you created.

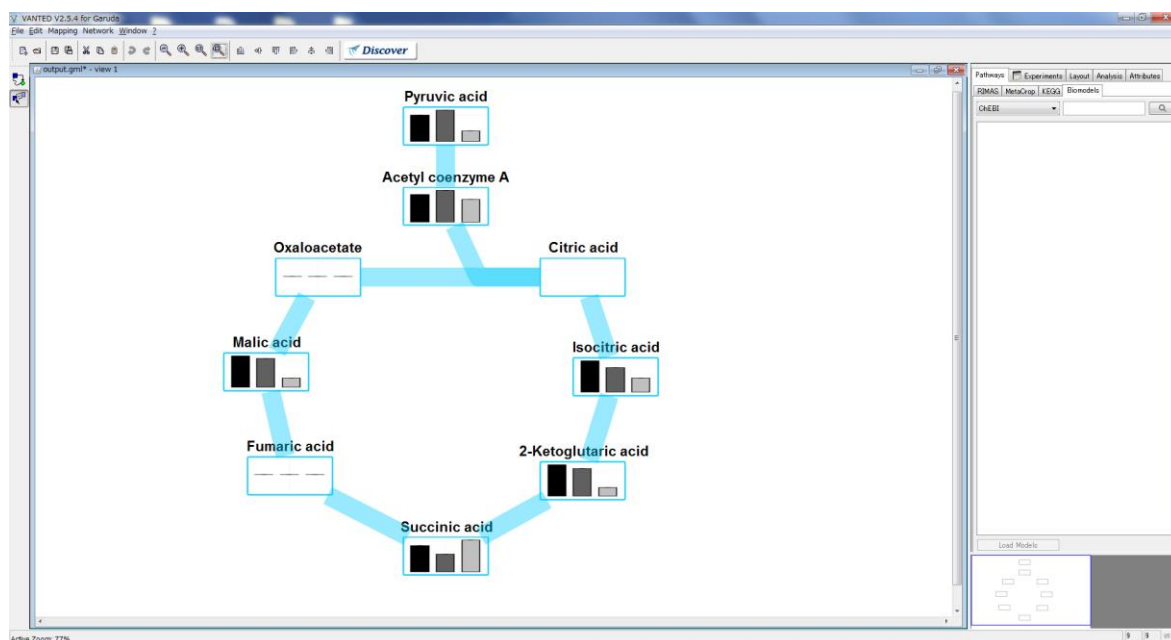
Click [Save the current graph as ...], set the data type to GML, give a file name, and save.



\*If there is a space in the file name, the data cannot be read, so name the file without using the space.

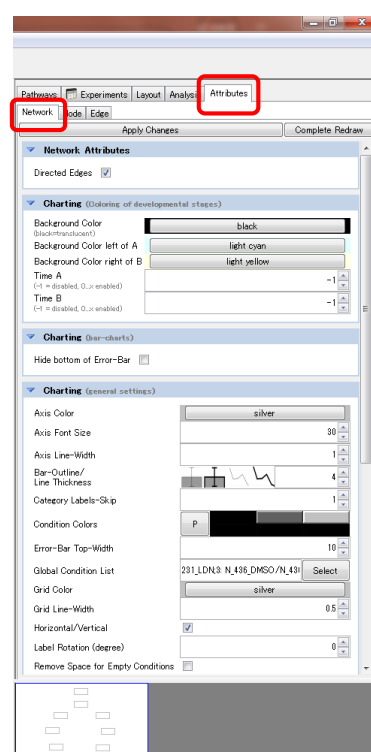
## 2. 8. Change Bars Layout

When opened in the Metabolic Map from which the data was created, it looks like this.



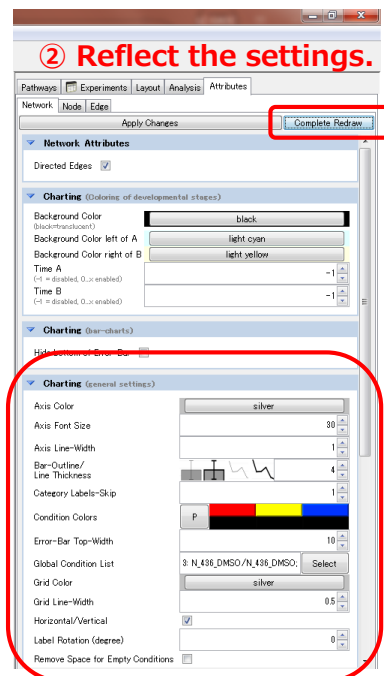
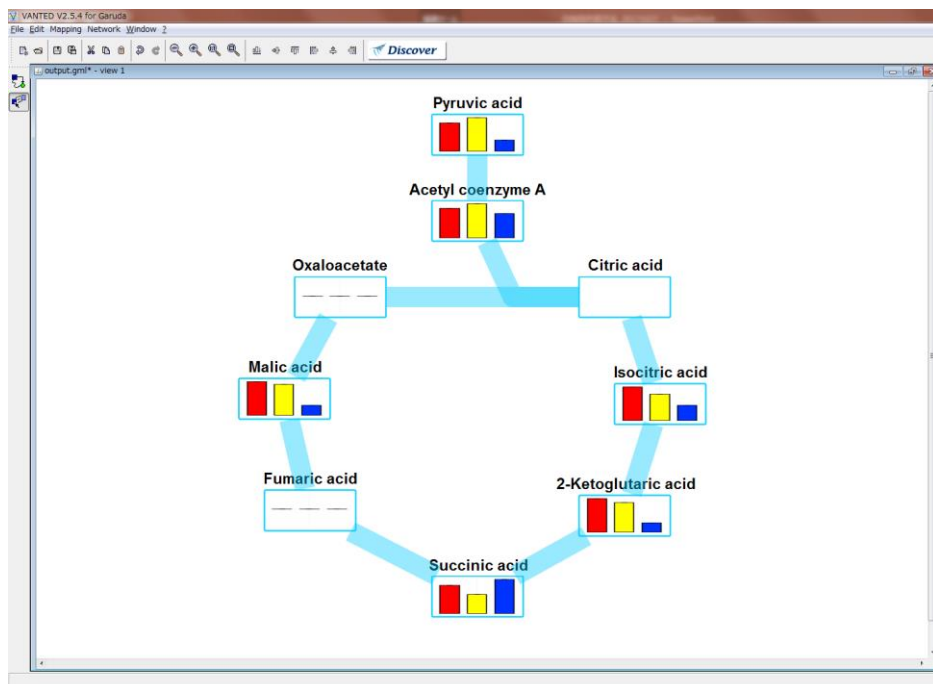
Change the layout such as the color of the bar.

You can change the bar layout from [Attributes] → [Network] on the right side of the screen.



Set the layout of the bar as shown on the right.

Click [Apply Changes] to reflect the settings.



① Set the bar layout