

Premium Option

# SLOT Advance

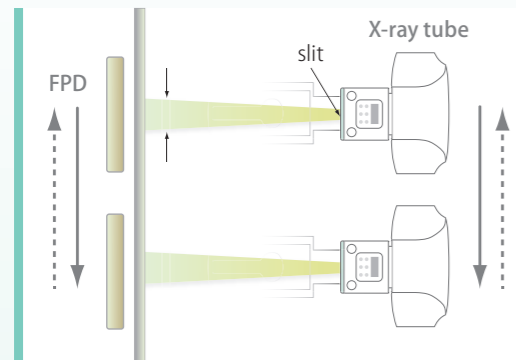
Ideal Technology for Long View Images with Maximum Accuracy



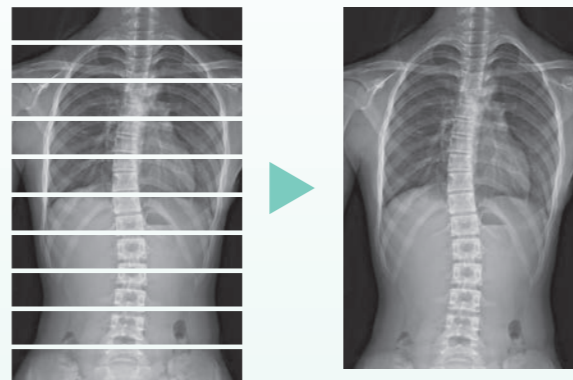
Cutting Edge Application Option  
for  
**SONIALVISION G4**

# SLOT Advance\*

SLOT Advance provides images with long fields of view, such as for full spine or full leg images, just by a very simple workflow, while also offering high accuracy images with minimal X-ray dose.



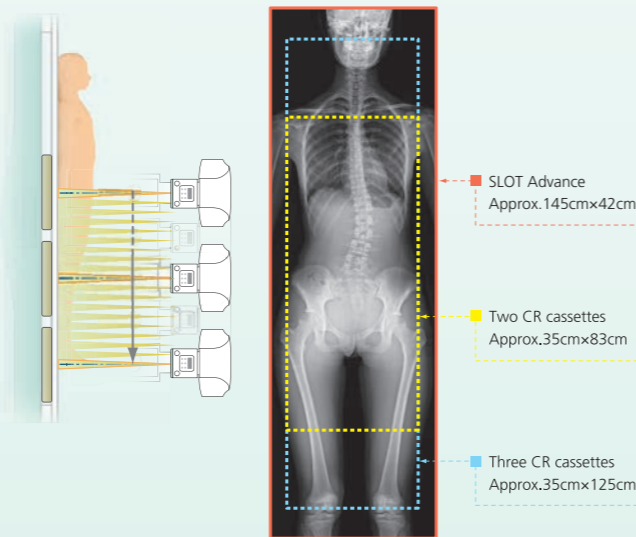
SLOT Advance acquires a series of only accurate images of a few centimeters central slit successively as the imaging chain moves along the patient.



The system automatically integrates all slot images into one complete long image rapidly.

## Providing super high accuracy measurements

SLOT Advance collimates the X-ray beam, so that it only exposes a narrow central slit field without distortion caused by oblique rays. These central slit images are captured using the SONIALVISION's super-high resolution Flat Panel Detector (FPD) by moving it in parallel with the X-ray tube. These successive images are then automatically reconstructed to create one long image in SONIALVISION G4's digital imaging unit (DR-300). Therefore, this enables very high accuracy measurements without distortion, even with a very simple workflow.



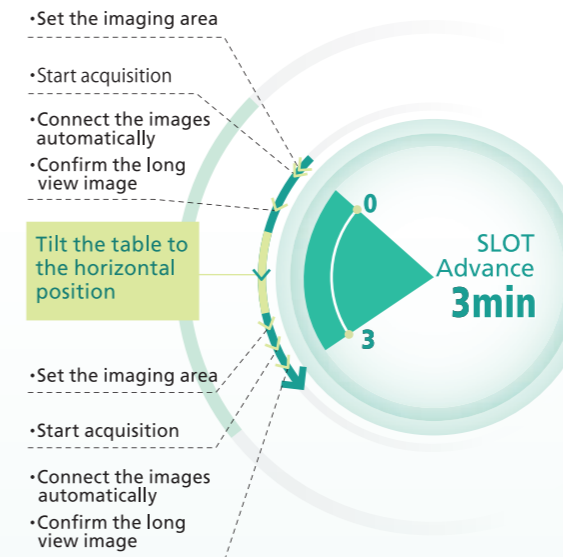
## Extra-wide Imaging Range

The combination of SONIALVISION G4's extra-long imaging chain slide coverage and 17" large FPD realizes even wider imaging coverage (Max. 145cm x 42cm) than that of CR's image stitching.

## Workflow Comparison with Conventional CR

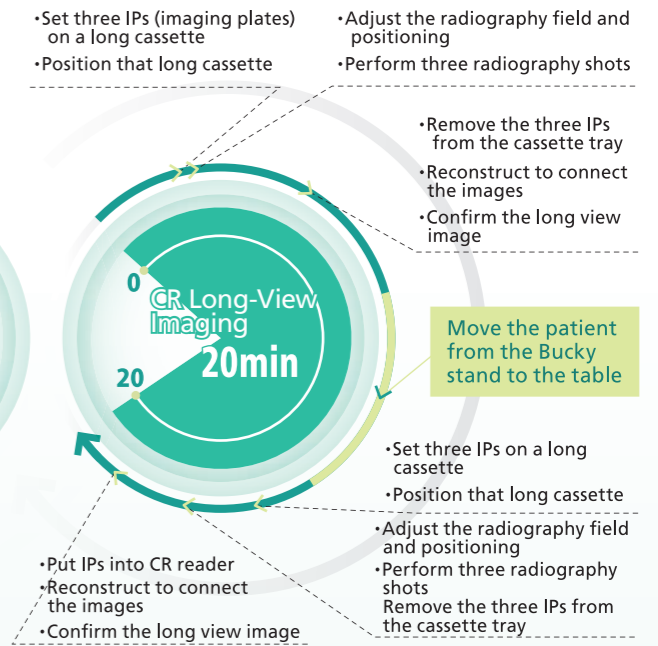
### Time Required to Perform Both Standing and Horizontal Position Examinations

#### SLOTR Advance with SONIALVISION



Only 3 min.

#### CR Long-View Imaging in a General Radiography Room



More than 20 min.

## Significant reduction of examination time

Simply set the starting and ending positions, then start the exposure, That's all it takes to obtain proper long view images using our Slot Radiography. All the post-processing required to connect, adjust, and display the images on the monitor is done automatically immediately after exposure, SLOTR Advance by SONIALVISION system eliminates the time-consuming steps of setting up the cassette and making adjustments, not to mention moving the patient between standing and horizontal positions, which are all required by conventional CR long-length imaging.

## High image quality with minimal dose

Due to the SONIALVISION G4's super-high resolution FPD and Shimadzu's advanced imaging technology that improves contrast resolution, the SLOTR Advance simultaneously achieves both high image quality as well as low dose to the patients. Also, the SLOTR Advance provides homogeneously excellent image quality to the whole range, from the thick region (hip etc.) to the thin body part.

## Real Time Slot Display

The SLOTR Advance is able to display its preview image on the acquisition monitor at real time during its slot acquisition. The reconstructed image follows soon after on the reference monitor.



Founded in 1875, Shimadzu Corporation, a leader in the development of advanced technologies, has a distinguished history of innovation built on the foundation of contributing to society through science and technology. We maintain a global network of sales, service, technical support and applications centers on six continents, and have established long-term relationships with a host of highly trained distributors located in over 100 countries. For information about Shimadzu, and to contact your local office, please visit our website at [www.shimadzu.com](http://www.shimadzu.com)



## Shimadzu Corporation

### Headquarters

1, Nishinokyo-Kuwabara-cho, Nakagyo-ku, Kyoto 604-8511, Japan  
<https://www.shimadzu.com/med/>



Shimadzu Corporation Medical Systems Division has been certified by TÜV Rheinland as a manufacturer of medical systems in compliance with ISO9001:2015 Quality Management Systems and ISO13485:2016 Medical Devices Quality Management Systems.

### Remarks:

- Every value in this catalogue is a standard value, and it may vary a little from the actual at each site.
- The appearances and specifications are subject to change for reasons of improvement without notice.
- Items and components in the photos may include optional items. Please confirm with your sales representative for details.
- Certain configurations may not be available pending regulatory clearance. Contact your Shimadzu representative for information on specific configurations.
- Before operating this system, you should first thoroughly review the Instruction Manual.