

Trinias C16/C12/F12 *unity smart edition*

Digital Angiography System

The image shows a Shimadzu Trinias Crossover Angiography System. It features a large, white, C-shaped gantry with a blue accent. A blue and white C-arm is attached to the gantry, with the word "Trinias" printed on its side. The C-arm has a blue base and a white upper section. A blue and white detector is attached to the end of the C-arm. The system is mounted on a stand with a blue base. The background is a blurred blue and white, suggesting a clinical setting.

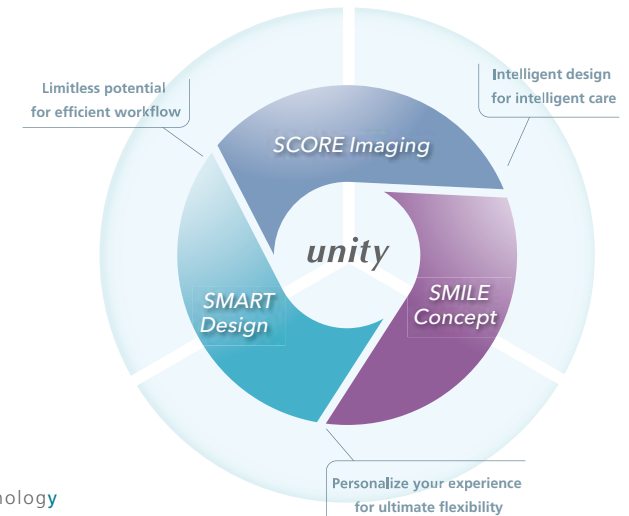
Crossover Angiography System

Trinias C16/C12/F12 *unity smart edition*





Based on our many years of experience, Shimadzu has added the latest advancements in imaging technology to our Trinias system to achieve top-quality patient care in interventional procedures. The result is a patient-centered experience, leaving operators free from worry so they can easily perform all types of interventional procedures. Trinias unity smart edition sets the bar high with improved functionality with new hardware and software features that provide a simple workflow for cardiac and vascular procedures from head to toe. The system uses Intelligent Design to provide Intelligent Care in minimally invasive procedures. Our technology provides solution to the imaging problems that you face every day.



*unity = unlimited intelligent technology

Single plane system



C16 unity smart edition



C12 unity smart edition



F12 unity smart edition

Scan me,
feel Trinias!

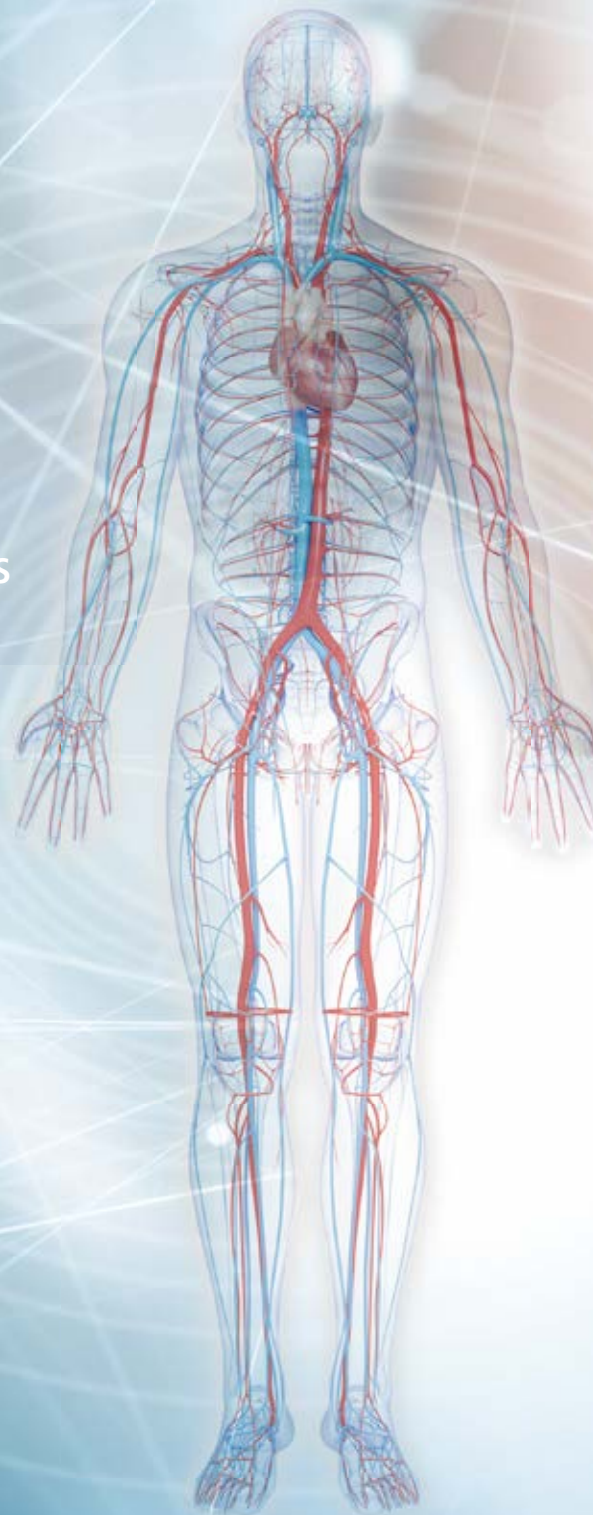


SCORE Imaging

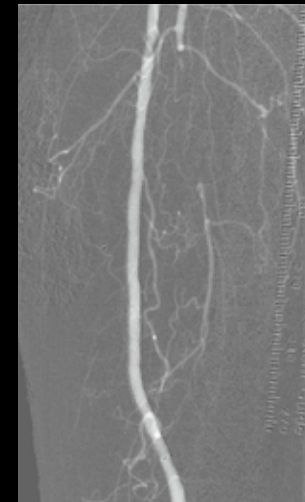
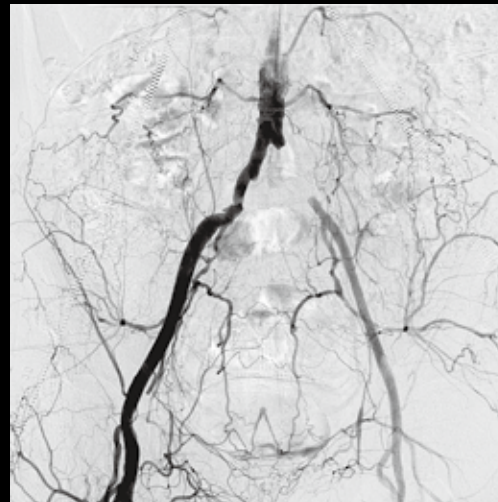
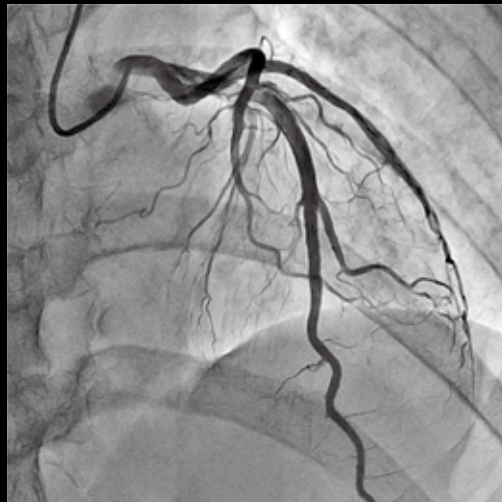
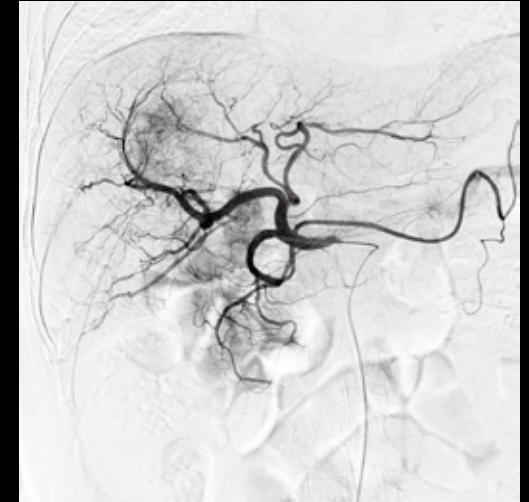
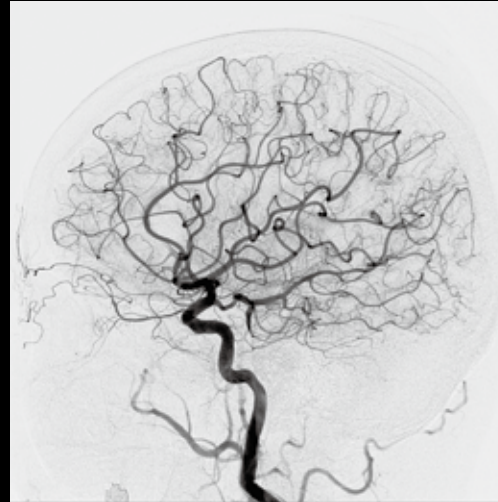
Taking Minimally Invasive Procedures to New Levels

SCORE PRO Advance

Equipped with advanced functionality for motion tracking noise reduction, and object isolation-based enhancement, the SCORE PRO Advance image processing unit was designed to achieve lower exposure levels and higher image quality. Shimadzu's real-time image processing technology can isolate fine blood vessels, such as peripheral vessels during interventional radiography (IVR) procedures, by enhancing only the target object without sacrificing image quality or increasing exposure dose. Consequently, Shimadzu supports advanced interventional procedures with even higher quality images.



SCORE PRO $\frac{1}{2}$ Advance DOSE



Femoral (CO₂)

Even Lower Exposure Dose Levels

The higher image quality offered by SCORE PRO Advance represents another step forward in the advancement of minimally invasive (low dose) procedures. By using an optimal combination of the low-dose mode and low pulse rate, optimized for each examination, Trinius systems can be expected to reduce exposure levels by about 50 % per examination while also providing high image quality.





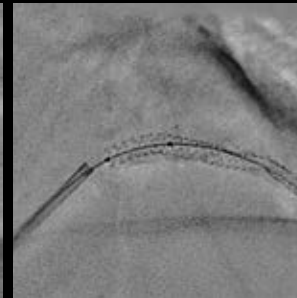
SCORE StentView**

~Experience the speedy and safe stent placement~

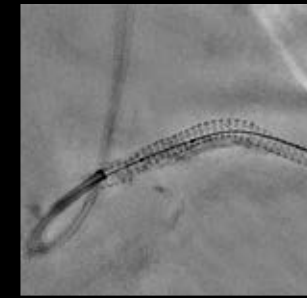
SCORE StentView is the latest, advanced version of StentView, considered truly revolutionary by many clinical users, allowing you to enhance stents and adjust the position in dynamic images in real-time. The function for specifying the region of interest (ROI) now allows multiple markers to be used for automatic detection, which contributes to higher detection efficiency and shorter examination times.



Stent overlap



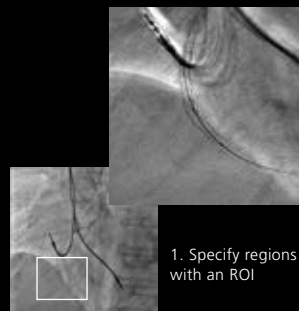
Post balloon



SCORE StentShot

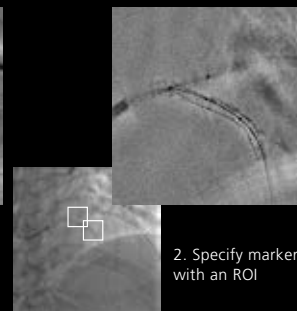
Regions of Interest Can Be Specified

Specifying a region of interest (ROI) improves device detection efficiency, even if multiple devices are present.



1. Specify regions with an ROI

The automatic recognition only identifies the marker within the ROI, regardless of how many markers are in the field.



2. Specify markers with an ROI

If there are multiple devices, due to bifurcations, identification markers can be specified for each device.

SCORE StentShot**

~Experience the accurate evaluation on placed stent~

Outstanding stent visualization with SCORE StentShot enhances patients' safety and reduces treatment time. This application provides a static noise free, stent enhanced image, for optimum post-deployment stent visualization.

Real-Time Observation Without Looking Away

Since SCORE StentView and SCORE StentShot are processed in the high-speed digital system, it is excellent in immediacy. SCORE StentView is displayed as a dynamic image on the live monitor while the foot switch is being pressed. SCORE StentShot displays the process of enhancement status on the live monitor and immediately displays the final high-definitive image on the reference monitor by releasing the foot switch. These real-time applications provide an environment that allows you to concentrate on treatment without interrupting the procedure.

** Select one as standard, the other one becomes optional.



SCORE RSM

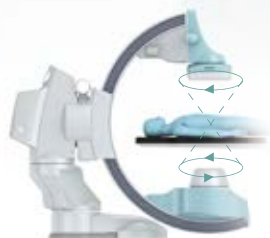
SCORE RSM is an extremely motion-tolerant DSA technique, achieved through Shimadzu's high-speed digital image processing technology.

This application is especially effective for tracking vessels across the entire lower extremities, for 3D imaging in combination with C-arm precession and pendulum modes and for examinations on patients who have difficulty holding their breath.

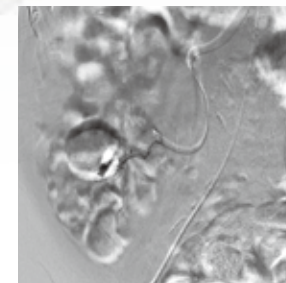
View images from multiple directions with a single imaging session

New Type of DSA Unaffected by Breathing Movements and Intestinal Gas

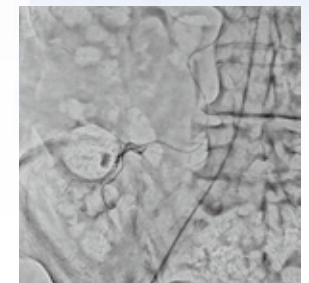
Precession mode



Pendulum mode



Normal DSA



SCORE RSM



SCORE Chase OPTION Improves Visibility of Entire Lower Extremities Area

Shimadzu SCORE Chase enables free panning longitudinally or laterally during acquisition to trace blood flow through blood vessels. After acquisition, SCORE Chase instantly creates an automatic positionally corrected stitched image and displays it on the monitor so that the overall blood flow through blood vessels in the lower extremities can be easily determined.

Display of Radiation area without fluoroscopy

In conjunction with the patient table top position and FOV, it is possible to display the current radiation area in real time on the long-view image without fluoroscopy. This is useful for radiation reduction and smooth examination workflow.

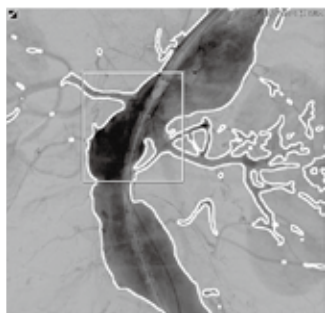
SCORE MAP

Trinias includes a wide variety of roadmap functions that can be selected based on the body area, procedure, and technique in interventional procedures.

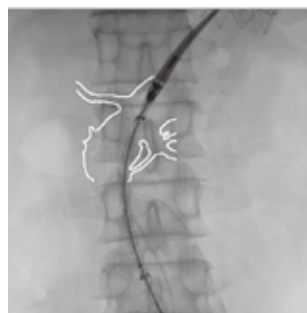
Because MAP image settings are kept associated with images even after changing the field of view or magnifying the image or after switching to the frontal or lateral views, MAP functionality can be used without repeating exposures for MAP purposes.

TraceMAP

The TraceMAP function significantly improves the visibility of wires and devices by automatically overlaying an outline of vascular walls isolated from DSA images onto fluoroscopic images. It can be used for aortic stent grafts and supports the endovascular treatment (EVT) of arteries in the lower extremities.



Automatic Trace



TraceMAP at ROI

Sketch function

This function enables easily drawing guide lines by hand on fluoroscopic images.



Sketch function

FluoroMAP

This applies a subtraction process to the current fluoroscopic image and uses the resulting image of blood vessels as a MAP image. Because it does not require any additional exposures for the MAP function, it results in reducing the contrast media and exposure levels used. Either a without-bone or with-bone display mode can be selected.

BlankMAP

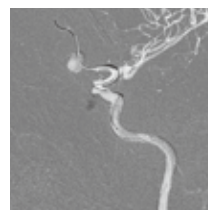
This function displays the blank frame with only the subsequent changes enhanced. It can be used for coil or liquid embolization of tumors in the head region, for example.

DSA-MAP

The DSA-MAP function displays DSA images overlaid on fluoroscopic images. Either a without-bone display mode, used for areas such as the head, or a with-bone display mode that retains the bones for use as a reference can be selected.



DSA-MAP



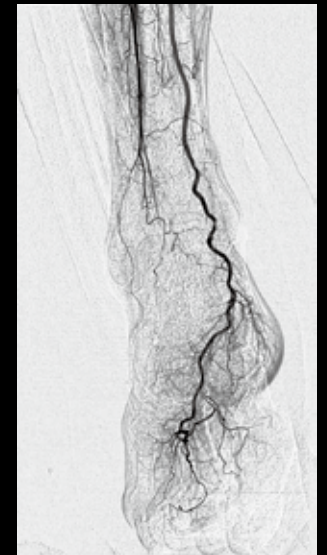
DSA-MAP





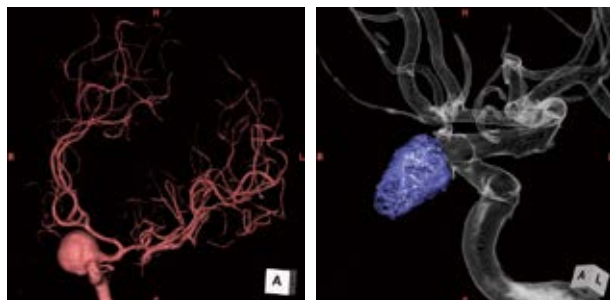
Flex-APS ~Advanced real-time pixel shift for DSA~

Flex-APS saves time by automatically adjusting three-dimensional misregistration caused by all body movements, including twist motion, providing enhanced DSA imaging.



SCORE 3D OPTION

The SCORE 3D application allows the rapid display of the 3D reconstructed images automatically after rotational radiography. With a top rotational image acquisition speed of 60 degrees per second, the shorter contrast medium injection time reduces the burden on patients while suppressing the impact of movements on the images and ensuring high image quality. In addition, operability has been dramatically improved significantly to easy GUI customization via the pallet function.



Palette Function

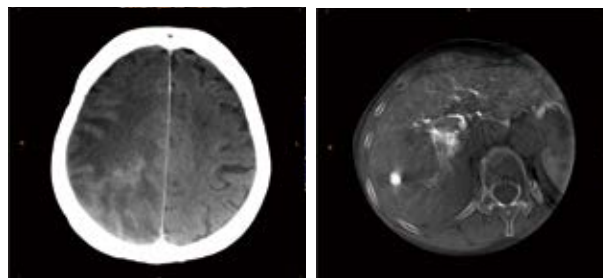
User-customizable user interface



SCORE CT OPTION

SCORE CT is an application for observing cross-sectional images of low-contrast regions, primarily tumor stains, during procedures. The application has two use modes depending on the procedure and radiographic region of interest: a 10-second mode (20 degrees/second rotation) and a 20-second mode (10 degrees/second rotation). Axial, coronal, and sagittal images are displayed automatically after radiography.

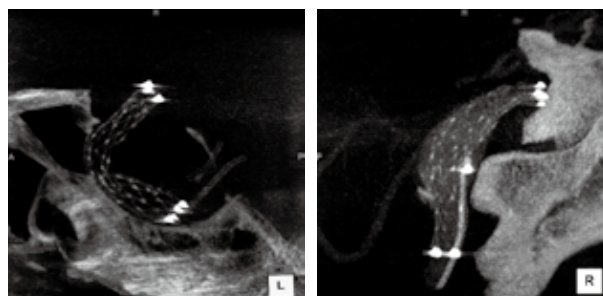
High Image Quality C-Arm CT



Confirm intracranial hemorrhages using post procedure C-arm CT.

Clearly renders low-contrast areas during TACE procedures.

High-Resolution C-Arm CT (CT-HR)



High-definition mode clearly renders intracranial stents.



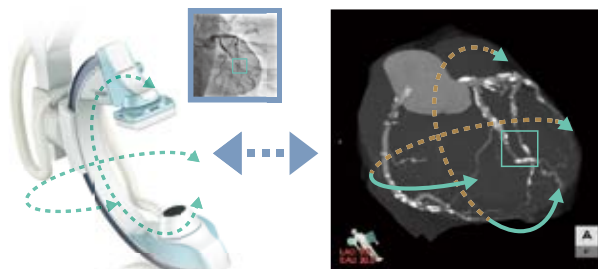


SCORE Navi / Navi+Plus OPTION

SCORE Navi/Navi+Plus is an application that utilizes preprocedural images to support minimally invasive interventions. By synchronizing the C-arm projections to pre-procedure MDCT images, the system enables these MDCT images to be used as a reference during interventions, reducing contrast media usage and X-ray dose. Automatic registration of the MDCT images with live fluoroscopy images is easily achieved. With the MDCT image overlaying the live fluoroscopy it allows you to adjust the rate of blending. The Navi+Plus application also includes a virtual stent feature that allows you to simulate the stent size and placement position before carrying out a procedure.

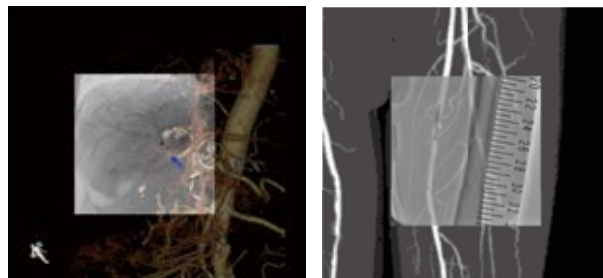
Bi-directional angle linkage between C-arm and MDCT image

Reference CT image tracks C-arm movement.



Wide-Area CT Plus Fluoroscopy Display

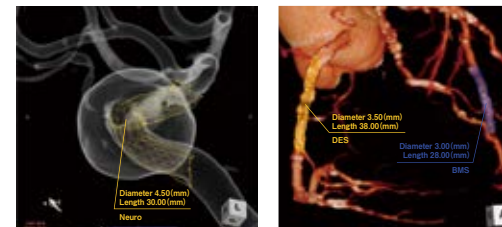
Supports additional dose reduction by reducing the fluoroscopy aperture.



SCORE Navi+Plus

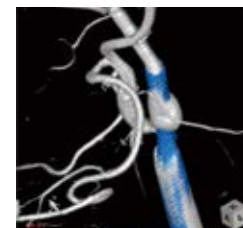
Virtual Stent

Simulates optimal stent size.



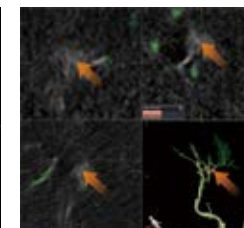
Multi-Data Fusion

Confirm stent deployment pre/post CAS.



Extender Function

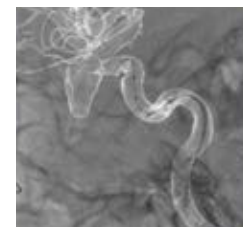
Automatically renders feeders to the tumor stain.



SCORE Navi

3D Road Map

Overlays a transparent image on a fluoroscopy image.



MPR Road Map

Overlay any cross section image on fluoroscopy image.





SMART Design

Changing the way. Making it possible.

c16/c12/F12

SMART Assist

The system has been designed for single-action performance to make system control in the examination room and control room as simple as possible. This improves efficiency during procedures.

C-Arm Controller

Cyber console

The C-arm can be freely controlled using a lever-type Cyber Console.



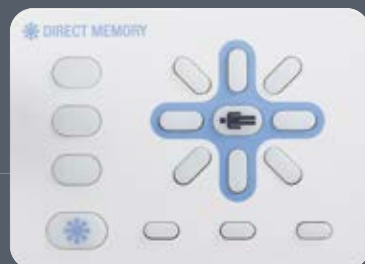
Cyber Grip

A CyberGrip controller is also available, which can be operated with one hand.



Direct Memory

Registered clinical angles can be called up intuitively using a graphical controller layout.



SMART Access

The single-plane system is available either with a ceiling-mounted (C16 / C12) or floor-mounted (F12) model C-arm. Both models are designed to provide a broad operating range. The system layout can be freely configured based on the procedures performed and can flexibly accommodate installing peripheral equipment as well.

Ceiling

Wide Coverage Reduces the Burden on Patients

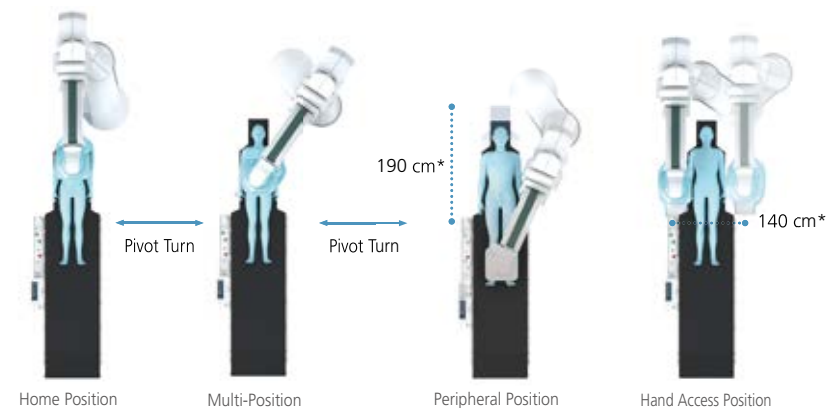
The ceiling-mounted C-arm is capable of full-body coverage without moving the patient, thanks to 210 cm wide transversal coverage in the transverse direction and 190 cm longitudinally. Transversal movement direction, in particular, supports a safe radial catheterization approach.



Floor

Six-Axis Triple-Pivot Construction for Full-Body Coverage

A total of six axes are provided for the base and rotational axes of the floor-mounted C-arm, achieving wide coverage. In particular, the triple-pivot construction of the base enables freely adjustable arm positioning and also allows transverse movement for radial access.



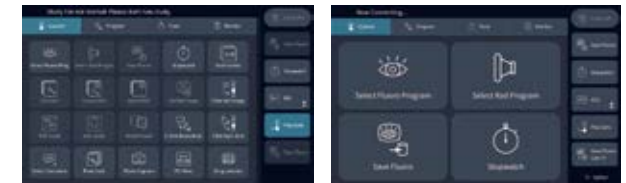
* Stated length (cm) describes total X-ray imaging range added to C-arm movement, table top movement, and FPD field of view.



SMART Touch Provides Smooth Operability

All screen operations are consolidated in one place on the touch panel, including those for changing the fluoroscopy/radiography program required during procedures, switching between a wide variety of functionality, and selecting images. By making operations easier to understand and intuitive, it supports a more sophisticated use of procedures and techniques.

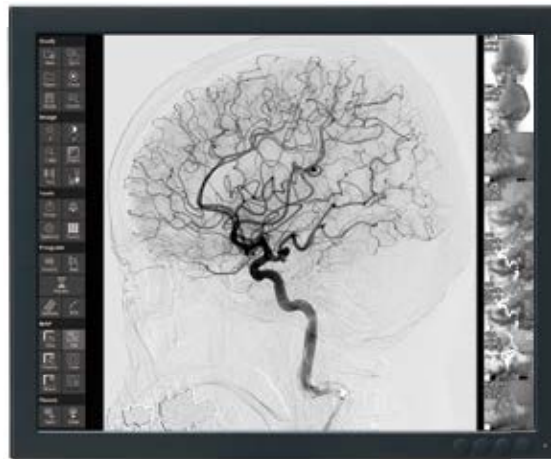
Customizable user interface



Identification of functions by color

By changing the button color, you can intuitively operate while concentrating on patient treatment.





Information-gathering in one location

The new graphic user interface of the main monitor enhances the display of all the essential information during procedures, including system geometric information and X-ray irradiation dose, further improving system workflow.

Parallel Processing Achieves an Efficient Workflow

Smart technology enables parallel image processing during examinations providing an efficient workflow.

SMART Display OPTION

With the large 58-inch high-resolution color LCD and touch panel controller, the operator can select the optimal display of image data to suit the current procedure.

Dynamic Reference

Reference images can be changed, replayed, or paused during fluoroscopy. Moving images from before and after surgical procedures can be compared and replayed.

Multifunctional Wireless Foot Switch OPTION

With no cables on the floor, it is easy to position the foot switch where the operator is standing.





SMILE Concept

Safety + Comfort = SMILE

Patient-Friendly Clean Design

The color design creates a slim form and clean look.



SMILE Dose-eye

■ Seven Features That Reduce Exposure

SMILE Dose-eye achieves an excellent system-wide optimization between lower dose and high image quality.

- | | |
|-------------------------------|--|
| 1 MBH Filter | Effectively eliminates unnecessary soft X-rays. |
| 2 Pulsed Fluoroscopy | Select from 10 different rates depending on the procedure. |
| 3 Grid Control | Blocks unnecessary soft radiation. |
| 4 Virtual Collimation | Enables collimation without fluoroscopy. |
| 5 Image Processing | SCORE PRO Advance ensures lower dose and higher image quality. |
| 6 Fluoroscopy Video Recording | High-definition fluoroscopy can substitute for radiography. |
| 7 Area Dosimeter | The monitor displays the actual dosage in real-time. |

SMILE Recovery

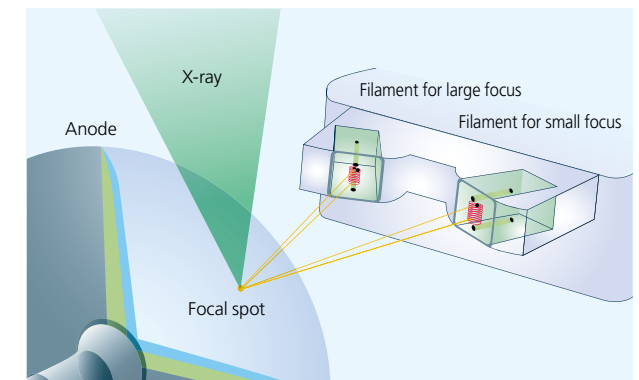
■ High-Speed Setup

All functions are available within two minutes after the power is turned ON.



■ Backup Filament

If a filament burns out during an examination, the other filament will be automatically selected so the examination can be continued.



Even More Worry-Free and Reliable Japanese Quality for Interventional Procedures

All Processes, From Production to Quality Control and Shipping, Performed Within Shimadzu

Shimadzu manufactures Trinias products at Shimadzu's own advanced technology plant, where all processes from production to quality control and shipping are performed within the Shimadzu facility to ensure Trinias products are delivered with the highest quality.



Advanced Quality Center Ensures High Quality

Within the Shimadzu facility, Shimadzu has built a Quality Center that is equipped with state-of-the-art equipment for various evaluation and analysis necessary to ensure that only the highest quality products are delivered. The Quality Center is also used for product development, quality assurance, and to ensure compliance with various regulations and standards.



- SUBSIDIARIES
- OFFICE
- J.V.
- Sales & Service Agents

Worldwide Service Network

Proactive Service Support Program

Periodic Maintenance

- Our professional service experts visit periodically and inspect the system.
- Mechanical, electrical and safety checks are performed. Calibration is carried out whenever necessary to ensure optimal system performance.

Emergency Service Support

- Shimadzu local service centers ensure rapid response times.
- On-call support is available for your emergency needs.

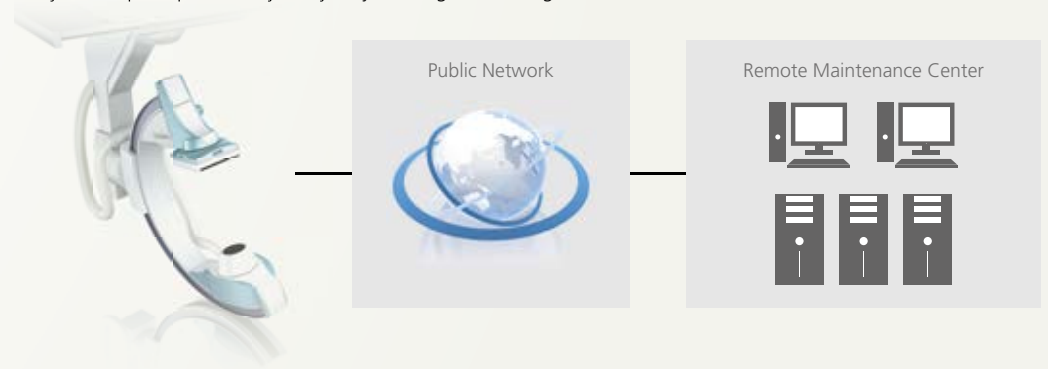
Parts Warranty Program

- A selection of parts warranty programs is available for you selection to manage your service needs and plan your running costs.

Remote Maintenance Service

The Shimadzu "Site-ViewBB" provides you with remote maintenance service.

- In the event of possible system errors, the Site-ViewBB automatically generates an alert message for proactive service support by our field service engineers.
- Some software updates can be performed by the Shimadzu Remote Maintenance Center through Site-ViewBB, further improving system uptime.
- Our system experts periodically analyze system log files through Site-ViewBB.



Founded in 1875, Shimadzu Corporation, a leader in the development of advanced technologies, has a distinguished history of innovation built on the foundation of contributing to society through science and technology. We maintain a global network of sales, service, technical support and applications centers on six continents, and have established long-term relationships with a host of highly trained distributors located in over 100 countries. For information about Shimadzu, and to contact your local office, please visit our website at www.shimadzu.com



Shimadzu Corporation

Headquarters

1, Nishinokyo-Kuwabara-cho, Nakagyo-ku, Kyoto 604-8511, Japan
<https://www.shimadzu.com/med/>



Shimadzu Corporation Medical Systems Division has been certified by TÜV Rheinland as a manufacturer of medical systems in compliance with ISO9001:2015 Quality Management Systems and ISO13485:2016 Medical Devices Quality Management Systems.

Remarks:

- Every value in this catalogue is a standard value, and it may vary a little from the actual at each site.
- The appearances and specifications are subject to change for reasons of improvement without notice.
- Items and components in the photos may include optional items. Please confirm with your sales representative for details.
- Certain configurations may not be available pending regulatory clearance. Contact your Shimadzu representative for information on specific configurations.
- Before operating this system, you should first thoroughly review the Instruction Manual.