

# Request Form for Aberration-corrected Concave Gratings for Constant-deviation Monochromators

Date: \_\_\_\_\_

1. Quantity: \_\_\_\_\_ pcs/lot (No. of lots per year: \_\_\_\_\_), \_\_\_\_\_ pcs/lot (No. of lots per year: \_\_\_\_\_)

2. Classification of grating:

☐ Blazed holographic grating (BHG)

☐ Holographic grating (HG)

3. Blank material:

☐ Soda glass (standard) ☐ BK7 ☐ Borosilicate glass ☐ Other \_\_\_\_\_

4. Dimensions (mm):

Width, W (perpendicular to grooves) (or  $\phi$ ): \_\_\_\_\_  $\pm$  \_\_\_\_\_  $\times$  Height,

H (parallel to grooves): \_\_\_\_\_  $\pm$  \_\_\_\_\_  $\times$  Thickness at center, T: \_\_\_\_\_  $\pm$  \_\_\_\_\_

\*The thickness at the center is usually around one sixth (1/6) of the diagonal (for rectangular blanks) or diameter (for round blanks).

5. Effective area: except for a rim of 2 mm

6. Groove density (grooves/mm): \_\_\_\_\_ (grooves/mm)

7. Wavelength range: \_\_\_\_\_ nm to \_\_\_\_\_ nm

8. Blaze (maximum efficiency) wavelength  $\lambda_B$  \_\_\_\_\_ nm

9. Entrance path length (r) Approx. \_\_\_\_\_ mm

10. Exit path length (r') Approx. \_\_\_\_\_ mm

11. Deviation angle (2K): Approx. \_\_\_\_\_ deg.

12. Spectral order (m) ☐ +1 ☐ -1 ☐ Either

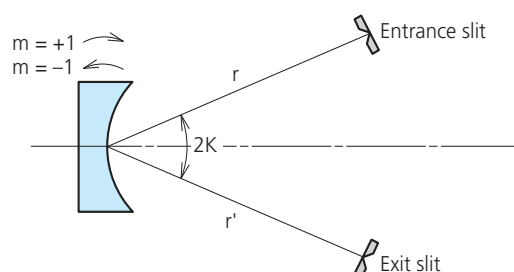
13. Size of entrance slit: Width \_\_\_\_\_  $\mu\text{m}$   $\times$  Height \_\_\_\_\_ mm

14. Coating:

☐ Standard: Al

☐ Au ☐ Other: \_\_\_\_\_

15. Other requirements:



\*The rotation direction (arrowhead) stands for scanning direction from short to long wavelengths.

Please make enquiries by copying this form, filling in the details, and sending it by fax. (+81-33219-5567)

Division, department, or section: \_\_\_\_\_

Address, including zip code: \_\_\_\_\_

Telephone number,  
including extension: \_\_\_\_\_

FAX number: \_\_\_\_\_

Full name: \_\_\_\_\_

E-mail address: \_\_\_\_\_