

## Application: Phosphor for LED

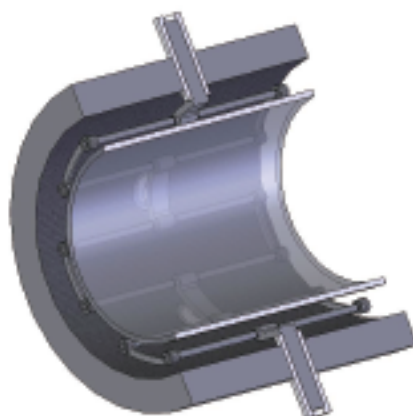
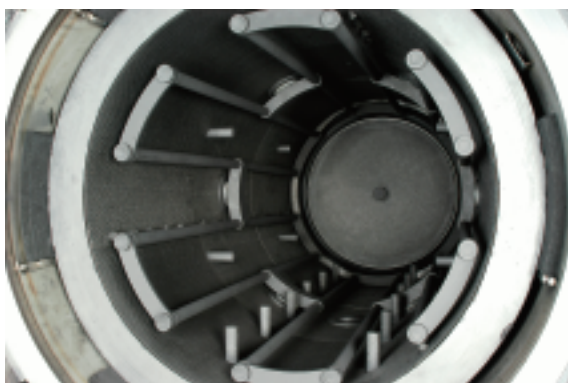
Type of Furnace:

**Pressure Sintering  
which maximum  
operating pressure  
is 0.9MPaG**



### Feature

1. Furnace builds by graphite heaters and graphite insulation.
2. Simple design in the furnace realize ease of maintenance
3. Partial temperature control system realize high temperature uniformity.
4. By using of tight box, it prevent heat loss and vaporized substances for the being dewaxed/sintered from diffusing to the exterior of the heating chamber.
5. Our unique shield structure at electrode protects insulated degradation.
6. Carbon composite plate integrated with graphite insulator improve life of the graphite insulator.
7. A maintenance-free built-in cooling fan and automatic open/close graphite insulator realize cooling the chamber efficiently in a short time.



### Specification and performance

Power: 3 $\phi$  AC 50/60Hz 320kVA  
Temperature: Nor. 2200°C  
Temperature deviation: 10°C range at 1000°C  
Vacuum range: 7 X 10<sup>-1</sup> Pa[abs]